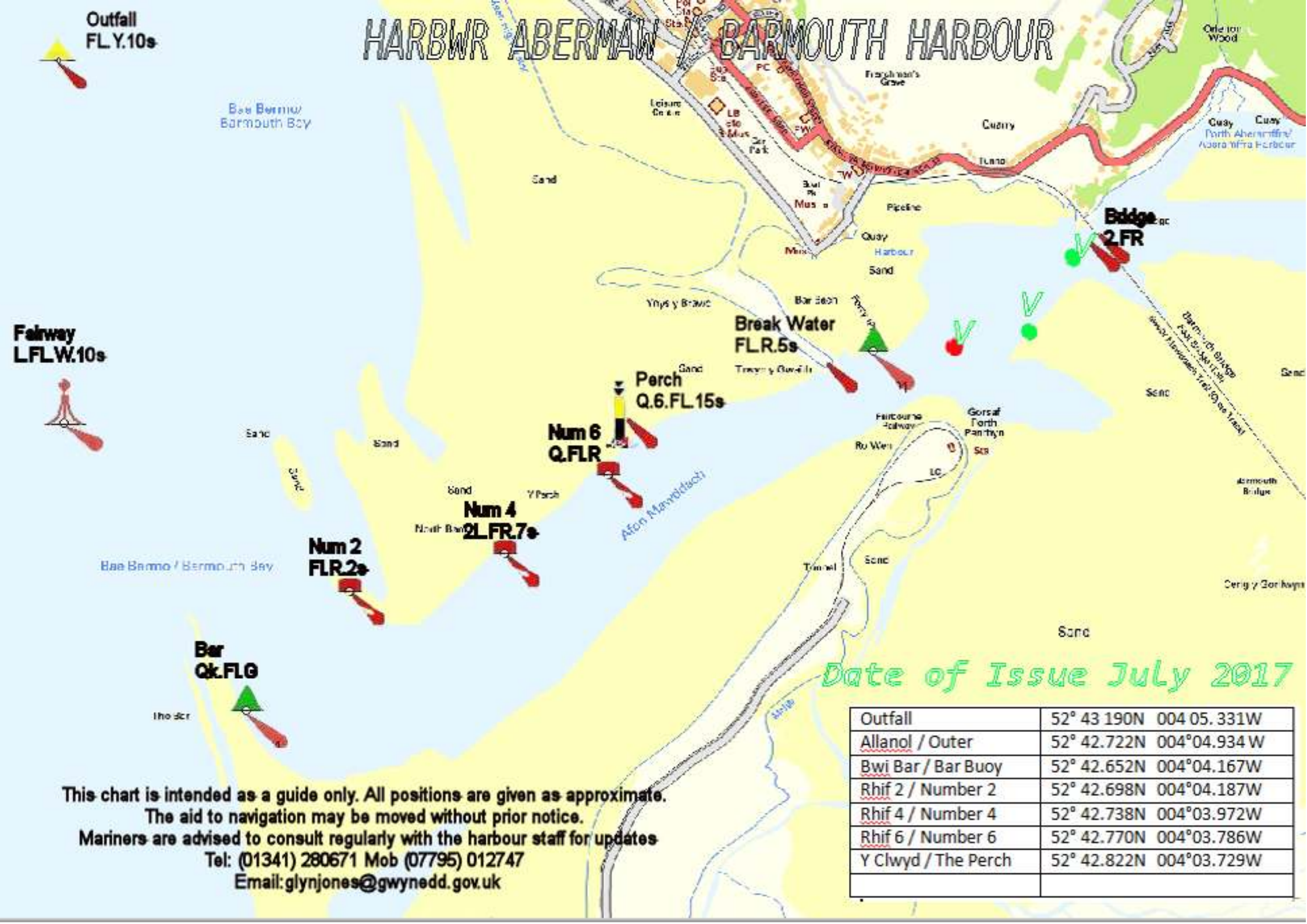


HARBWR ABERMAW / BARMOUTH HARBOUR



Date of Issue July 2017

Outfall	52° 43.190N 004° 05.331W
Allanol / Outer	52° 42.722N 004° 04.934W
Bwi Bar / Bar Buoy	52° 42.652N 004° 04.167W
Rhif 2 / Number 2	52° 42.698N 004° 04.187W
Rhif 4 / Number 4	52° 42.738N 004° 03.972W
Rhif 6 / Number 6	52° 42.770N 004° 03.786W
Y Clwyd / The Perch	52° 42.822N 004° 03.729W

This chart is intended as a guide only. All positions are given as approximate.
 The aid to navigation may be moved without prior notice.
 Mariners are advised to consult regularly with the harbour staff for updates
 Tel: (01341) 280671 Mob (07795) 012747
 Email: glynjones@gwynedd.gov.uk