



# HARBWR PORTHMADOG HARBOUR

Mae'r sianel yn newid cwrs yn rheolaidd. Cynghorir bod morwyr yn cysylltu gyda'r Harbwrfeistr am y wybodaeth diweddaraf.

The channel changes course regularly. Please contact the Harbourmaster for the latest information

01766 512927 / 07879433147  
VHF Channel 12 / 16

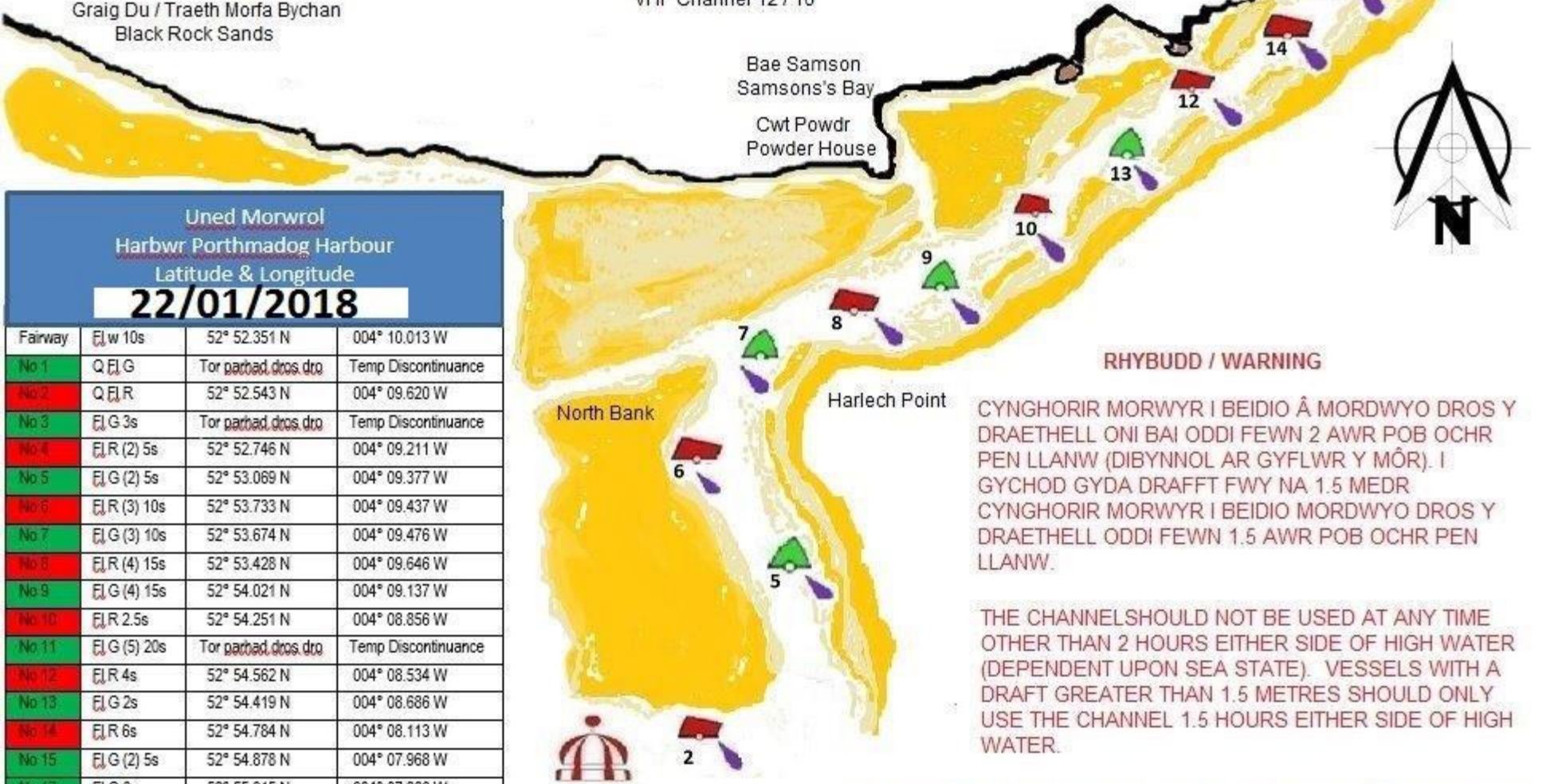
Graig Du / Traeth Morfa Bychan  
Black Rock Sands

Bae Samson  
Samsons's Bay

Cwt Powdr  
Powder House

Borth-Y-Gest

**CEI  
BALAST**



### RHYBUDD / WARNING

CYNGHORIR MORWYR I BEIDIO Â MORDWYO DROS Y DRAETHELL ONI BAI ODDI FEWN 2 AWR POB OCHR PEN LLANW (DIBYNNOL AR GYFLWR Y MÔR). I GYCHOD GYDA DRAFFT FWY NA 1.5 MEDR CYNGHORIR MORWYR I BEIDIO MORDWYO DROS Y DRAETHELL ODDI FEWN 1.5 AWR POB OCHR PEN LLANW.

THE CHANNEL SHOULD NOT BE USED AT ANY TIME OTHER THAN 2 HOURS EITHER SIDE OF HIGH WATER (DEPENDENT UPON SEA STATE). VESSELS WITH A DRAFT GREATER THAN 1.5 METRES SHOULD ONLY USE THE CHANNEL 1.5 HOURS EITHER SIDE OF HIGH WATER.

DARLUN EGLURHAOL: NID YW CAEL EI DDEFNYDDIO AR GYFER MORDWYO  
ILLUSTRATION: NOT TO BE USED FOR NAVIGATION

Uned Morwrol Harbwr Porthmadog Harbour Latitude & Longitude <b>22/01/2018</b>			
Fairway	Elw 10s	52° 52.351 N	004° 10.013 W
No 1	Q E L G	Tor parhad, dros dro	Temp Discontinuance
No 2	Q E L R	52° 52.543 N	004° 09.620 W
No 3	E L G 3s	Tor parhad, dros dro	Temp Discontinuance
No 4	E L R (2) 5s	52° 52.746 N	004° 09.211 W
No 5	E L G (2) 5s	52° 53.069 N	004° 09.377 W
No 6	E L R (3) 10s	52° 53.733 N	004° 09.437 W
No 7	E L G (3) 10s	52° 53.674 N	004° 09.476 W
No 8	E L R (4) 15s	52° 53.428 N	004° 09.646 W
No 9	E L G (4) 15s	52° 54.021 N	004° 09.137 W
No 10	E L R 2.5s	52° 54.251 N	004° 08.856 W
No 11	E L G (5) 20s	Tor parhad, dros dro	Temp Discontinuance
No 12	E L R 4s	52° 54.562 N	004° 08.534 W
No 13	E L G 2s	52° 54.419 N	004° 08.686 W
No 14	E L R 6s	52° 54.784 N	004° 08.113 W
No 15	E L G (2) 5s	52° 54.878 N	004° 07.968 W
No 17	E L G 6s	52° 55.015 N	004° 07.866 W