

Rhif y Cais / Application Number : C14/0386/24/LL

Cynllun lleoliad ar gyfer adnabod y safle yn unig. Dim i raddfa.  
Location Plan for identification purposes only. Not to scale.



Atgynhyrchir y map hwn o Ddauydd yr Ordnance Survey gyda phantlaid yr Ordnance Survey ar ran Rheolwr Llyfrfa Eri Mawrmydi. © Hawlfraint y Goron. Mae atgynhyrchu heb ganiad yn torri hawlfraint y Goron a gall hyn arwain at erlyniad neu achos sifil. Cyngor Gwynedd - 100023387 - 2008


This map is reproduced from Ordnance Survey material with the permission of Ordnance Survey on behalf of the Controller of Her Majesty's Stationery Office. © Crown copyright. Unauthorised reproduction infringes Crown copyright and may lead to prosecution or civil proceedings. Cyngor Gwynedd - 100023387 - 2008

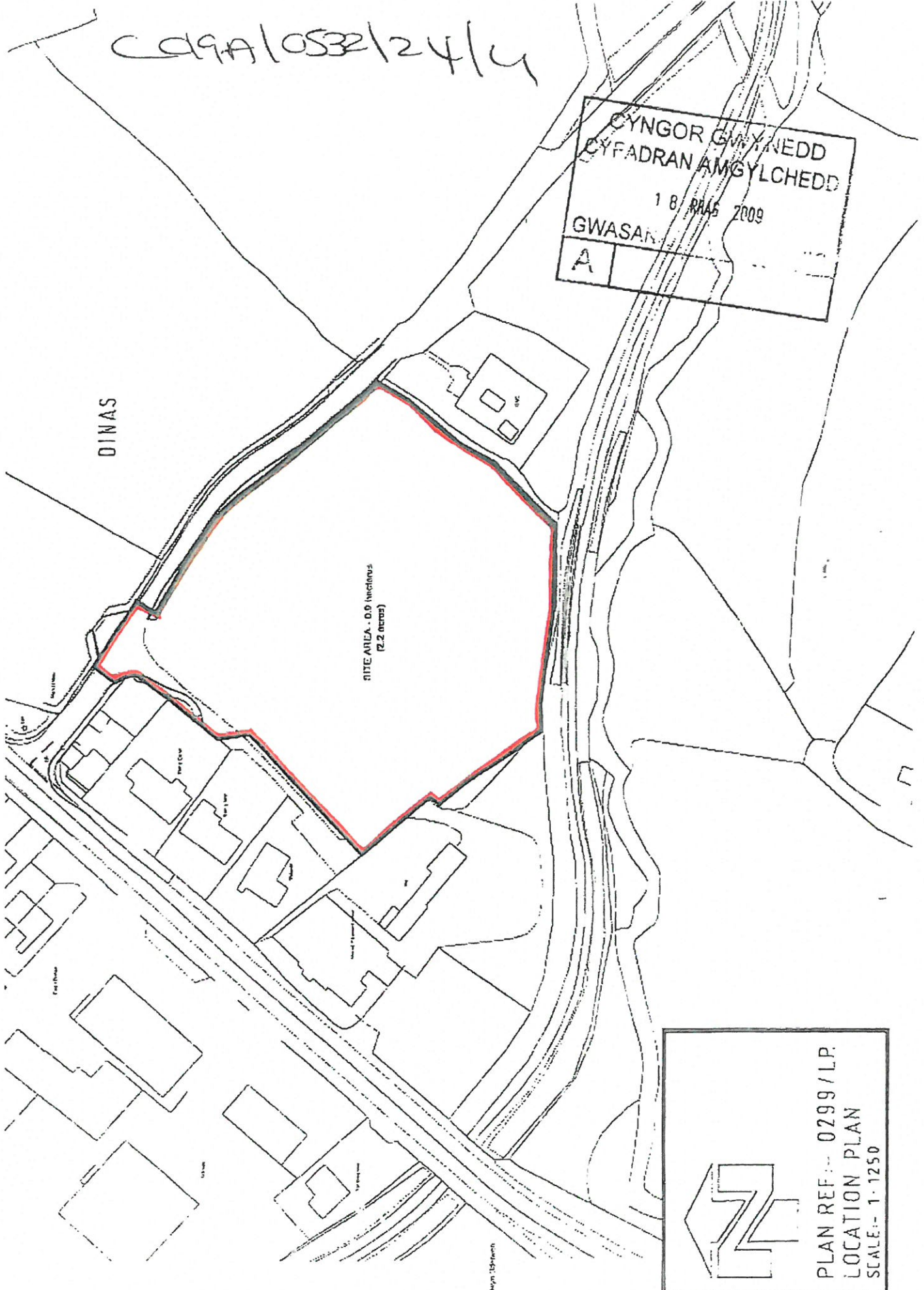
C99A/0532/24/4

CYNGOR GWYNEDD  
CYFADRAN AMGYLCHEDD  
18 MARCH 2009  
GWASANAETH  
A

DINAS

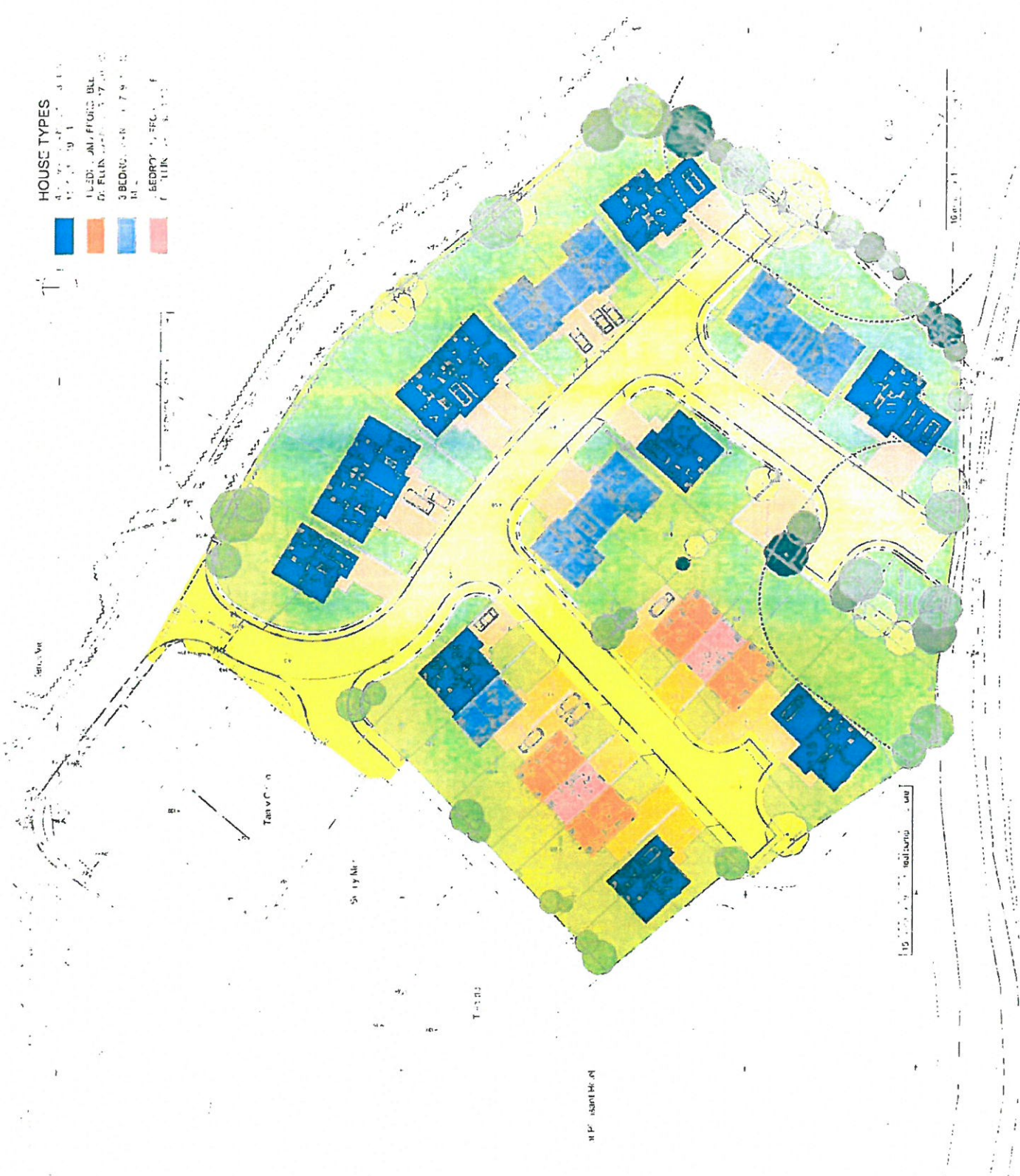
SITE AREA - 0.9 hectares  
(2.2 acres)

  
PLAN REF:- 0299/LP  
LOCATION PLAN  
SCALE:- 1:1250



**HOUSE TYPES**

Blue	4 BED, 2 BATH, 2 CAR
Orange	1 BED, 1 BATH, 1 CAR
Light Blue	3 BED, 2 BATH, 2 CAR
Red	2 BED, 1 BATH, 1 CAR



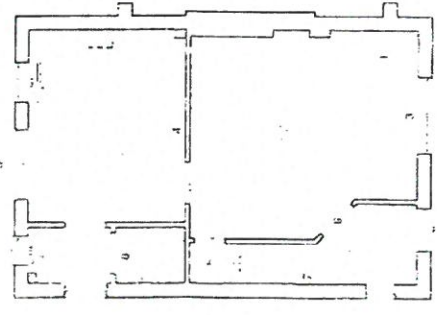
Houseing Development  
at Durrus, Carrigrohane  
Project of Lloyds  
S01,001  
1:250, A1  
May 2003



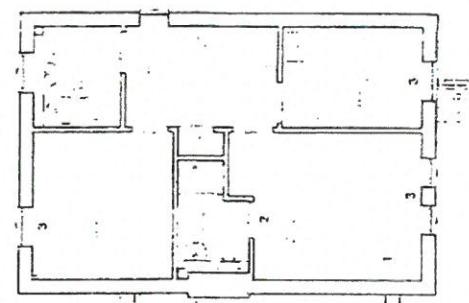
CYNGOR GWYNEDD  
 CYFAFAN YR AWGUST, CHILTO  
 8 MEDI 2010  
 GWASANAETH CYNLLUNIO  
 THRAFIDINEITH  
 A



second floor plan



first floor plan

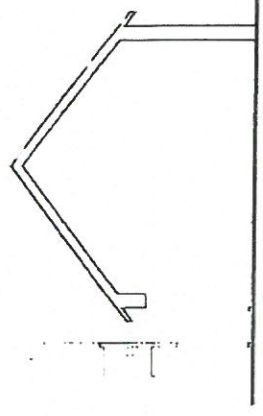


first floor plan

14th  
 C.A. = D.J.C. 11/1/07 Sud  
 Group 1 - 10/1/07

Natural stone used for walls with fibre clay  
 render for the chimney and

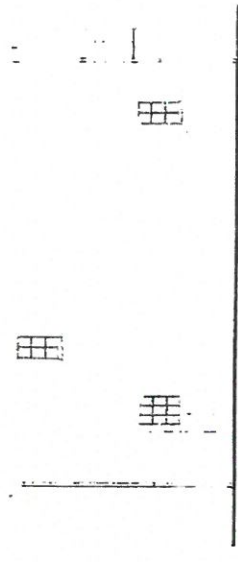
pointed oak and iron on bargeboard  
 and rafters  
 liquor of hardwood casement  
 wood as to rest with cut stone & its  
 required hardwood spacing with  
 windows. In front with cut stone with  
 required hardwood gables, support  
 to natural stone lead canopy  
 covered garden wall with  
 JPMC rainwater goods - colour black  
 liquor of hardwood casement  
 with cut stone threshold



side elevation

Lifetime Homes Features

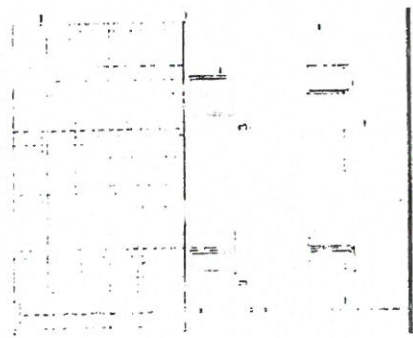
- key - refer to # on plan
- 1. Identified space for future provision lift to bedroom
  - 2. Easy route for future lift to front bathroom & bedroom
  - 3. Low window sills
  - 4. Walls able to take future adaptability
  - 5. Accessible threshold
  - 6. Accessible door widths
  - 7. Provisions for future stair lift
  - 8. Accessible toilet at ground level



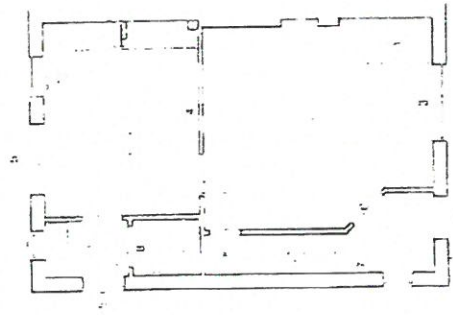
side elevation

Housing Development  
 as Planning Permission  
 Proposed House Type  
 907,000  
 1110008A3  
 May 2000  
 10/1/07

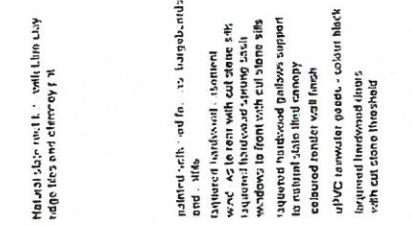
CYNGOR GWYNEDD  
 CYFADRAN YR AMGYLLC: IEDD  
 8 MEDI 2008  
 GWASANAETH CYRLLUNIO  
 THIRFINDIAETH  
 A



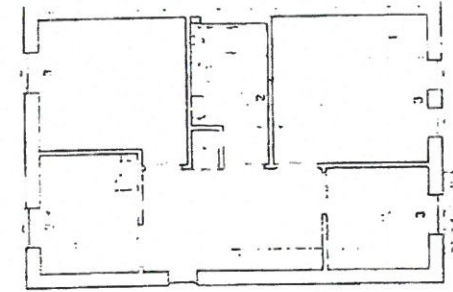
Ground floor plan



Ground floor plan



Ground floor plan



Ground floor plan

1. From stores feature  
 any other to 2 on plan
1. Identified stairs for future platform lift to bedroom
  2. Easy route for future hand from bathroom to built in
  3. Low window sill
  4. Walls able to take future adaptability
  5. A1. 250mm threshold
  6. 7. 250mm clear width
  7. Provision for future stair lift
  8. 8. Stairs to fit at ground level

Material specification - walls, lime wash  
 edge tiles and chimney tiles

Painted walls and floor - large beds  
 and side  
 Painted hardwood - skirting  
 WPC AS floor with cut stone slip  
 required for window opening  
 windows to front with cut stone sills  
 required hardwood gallery support  
 to rubber stain floor canopy  
 coloured render wall finish  
 uPVC rainwater gutter - colour black  
 required hardwood finish  
 with cut stone threshold

Planning Development  
 at Dinas Gaerffwrdd  
 Proposed House type  
 001.004  
 1:100 P1A3  
 May 2008

WPI: Q108

CYNGOR GWYNEDD  
CYFADGAN YR AMGŶLCHIEDD  
8 MEUD 2008  
GWASANAETH CYMLLUNIO  
THIRAFENIDIAETH  
A

Heb uchafbwrdd neu ffiniau cob hyspwrdd  
ffurfiol i go i'w ddiarffwrdd  
brwyddwrdd a safon

ffurfiol neu ffiniau cob hyspwrdd  
ffurfiol i go i'w ddiarffwrdd  
brwyddwrdd a safon

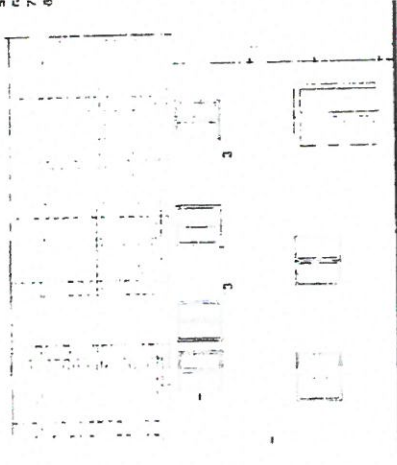
ffurfiol neu ffiniau cob hyspwrdd  
ffurfiol i go i'w ddiarffwrdd  
brwyddwrdd a safon

ffurfiol neu ffiniau cob hyspwrdd  
ffurfiol i go i'w ddiarffwrdd  
brwyddwrdd a safon

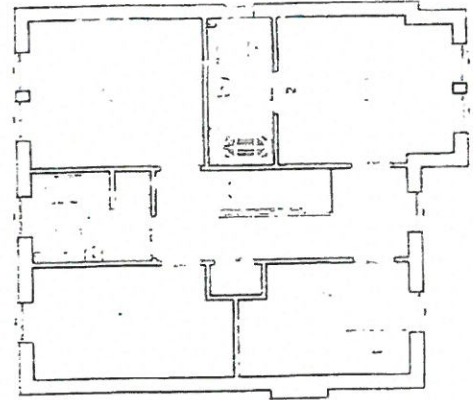
1. Identifico spaces for future platform off to back of
2. Easy route for future loop from bedroom to bathroom
3. Low wall
4. White tiles to the future utility
5. Accessible mensh
6. Accessible shower
7. Provision for future toilet
8. Accessible toilet at ground level

ffurfiol neu ffiniau cob hyspwrdd  
ffurfiol i go i'w ddiarffwrdd  
brwyddwrdd a safon

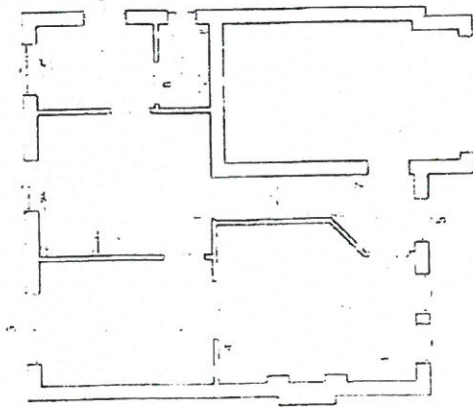
ffurfiol neu ffiniau cob hyspwrdd  
ffurfiol i go i'w ddiarffwrdd  
brwyddwrdd a safon



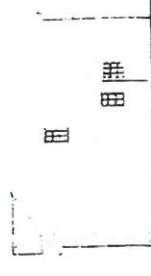
ffurfiol neu ffiniau cob hyspwrdd  
ffurfiol i go i'w ddiarffwrdd  
brwyddwrdd a safon



ffurfiol neu ffiniau cob hyspwrdd  
ffurfiol i go i'w ddiarffwrdd  
brwyddwrdd a safon



ffurfiol neu ffiniau cob hyspwrdd  
ffurfiol i go i'w ddiarffwrdd  
brwyddwrdd a safon



ffurfiol neu ffiniau cob hyspwrdd  
ffurfiol i go i'w ddiarffwrdd  
brwyddwrdd a safon



ffurfiol neu ffiniau cob hyspwrdd  
ffurfiol i go i'w ddiarffwrdd  
brwyddwrdd a safon

Housing Development  
at Dinas Gwynedd  
Proposed House Type  
RD1 007  
1100 G.A.3  
Mwy GDD  
01 300 11 000 1 111



CYNGOR GWYNEDD  
 CYFAJIAN YR AAGYLCHEDD  
 8 MEDI 2008  
 GWASANAETH CYRILLUNIO  
 THRAFIDIAETH

GFA = 142.40m x 14.50m  
 1000mm x 300mm x 250mm



- Natural stone in floor with blue clay ridge tiles and chimney at front porch roof to rear, brickwork and rafters.
- Layout of handwood casement windows to rear with cut stone sills. Insulated handwood opening with windows to front with cut stone sills. Columns inside wall finish.
- Construction brick with roof.
- UPVC rainwater goods - colour to suit. Insulate handwood doors with cut stone thresholds.

front elevation

rear elevation

side elevation 1\_00

side elevation 2\_00

side elevation 3\_00

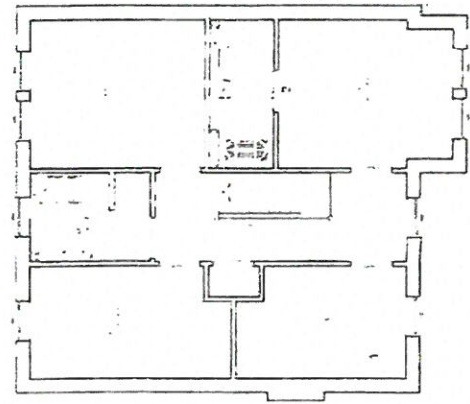
side elevation 4\_00

side elevation 5\_00

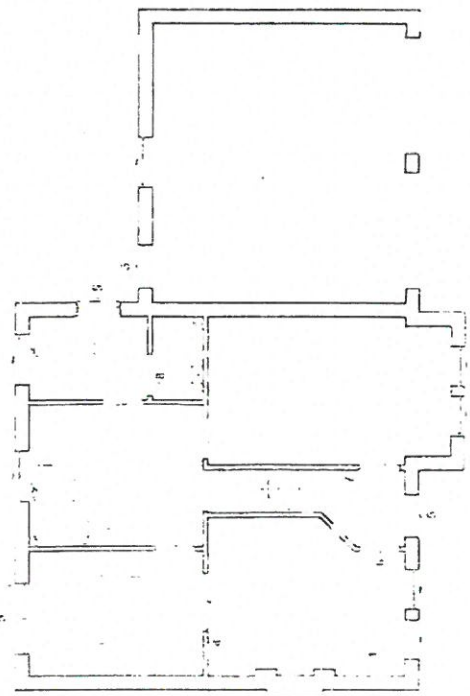
side elevation 6\_00

side elevation 7\_00

side elevation 8\_00



front elevation



rear elevation

side elevation 1\_00

side elevation 2\_00

side elevation 3\_00

side elevation 4\_00

side elevation 5\_00

side elevation 6\_00

side elevation 7\_00

side elevation 8\_00

side elevation 9\_00

side elevation 10\_00

side elevation 11\_00

side elevation 12\_00

- 1. Identified areas for future alterations to structure.
- 2. Easy route for future heat from bathroom to bedroom.
- 3. Low water tank.
- 4. Water abut to late future adaptability.
- 5. Accessible for chairs.
- 6. Accessible for wheelchairs.
- 7. Provision for future stair lift.
- 8. Accessible to lot at ground level.

key - refer to # on plan

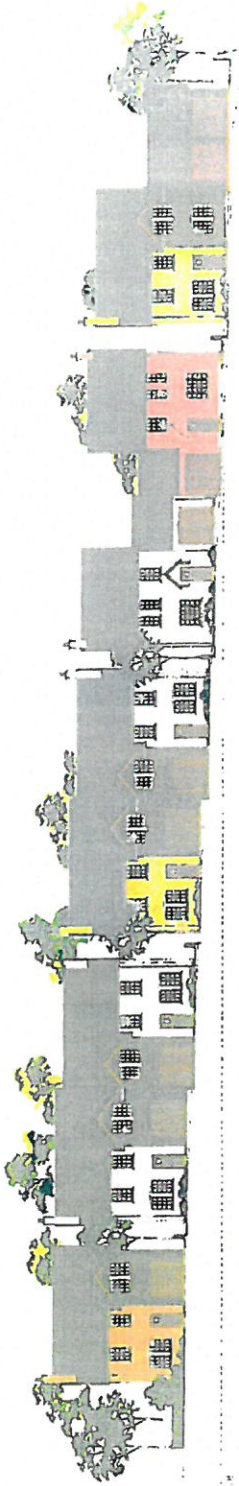
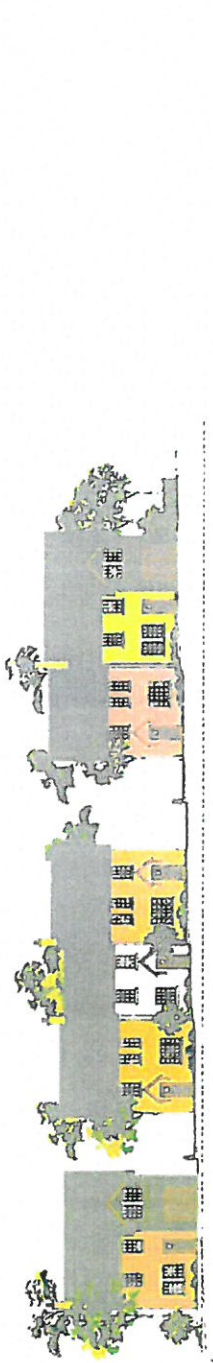
Housing Development  
 at Dinor, Caernarfon  
 Proposed House Type  
 801\_008  
 1:100 (R.A.S.)  
 May 2008

uniquis

4 bed type 3

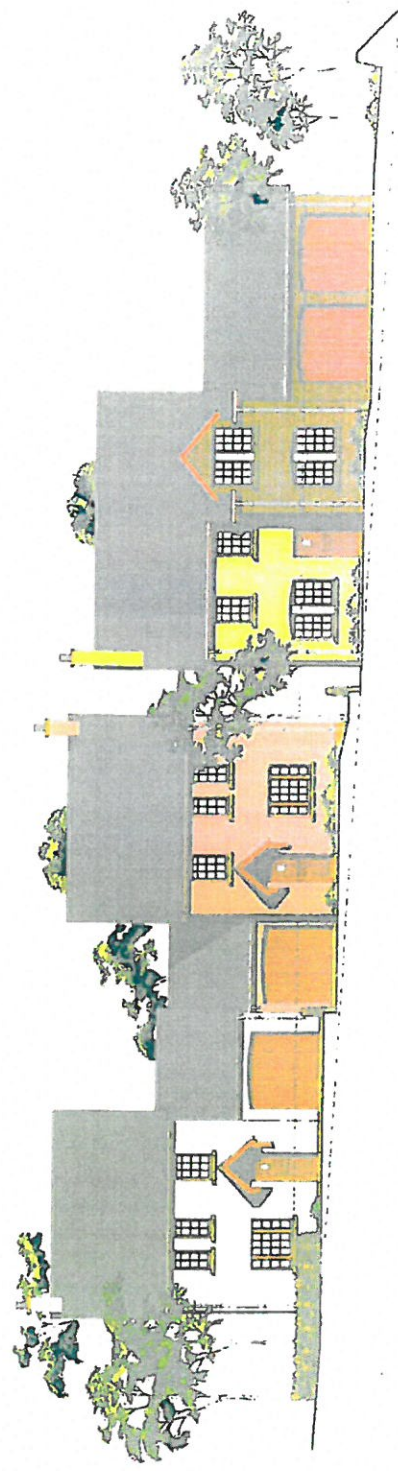
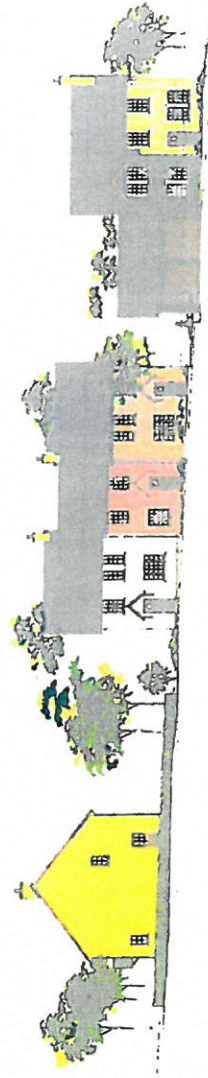
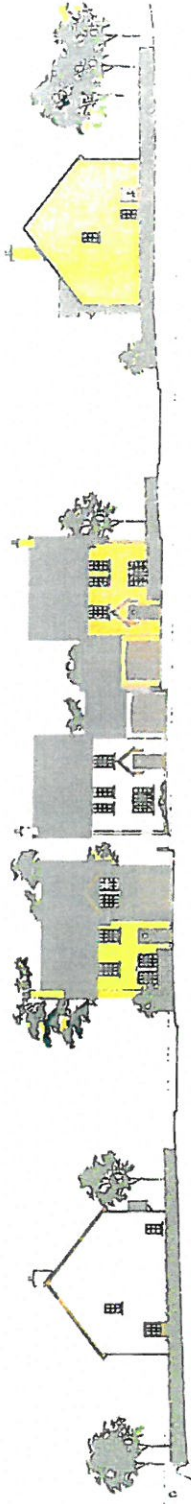


HOUSE, TY, C.



Housing Development  
at Dinah, California  
Project and Artist's Conception  
901.002  
1:150 - 1/4" = 1'  
May 2008

HOUSE TYPES  
 1. 1.5  
 2. 1.5  
 3. 1.5  
 4. 1.5  
 5. 1.5



Housing Development  
 at Ombria, CA  
 Proposed Streetscape Plan  
 807.0003  
 1:150, 7/1 A1  
 May 2008