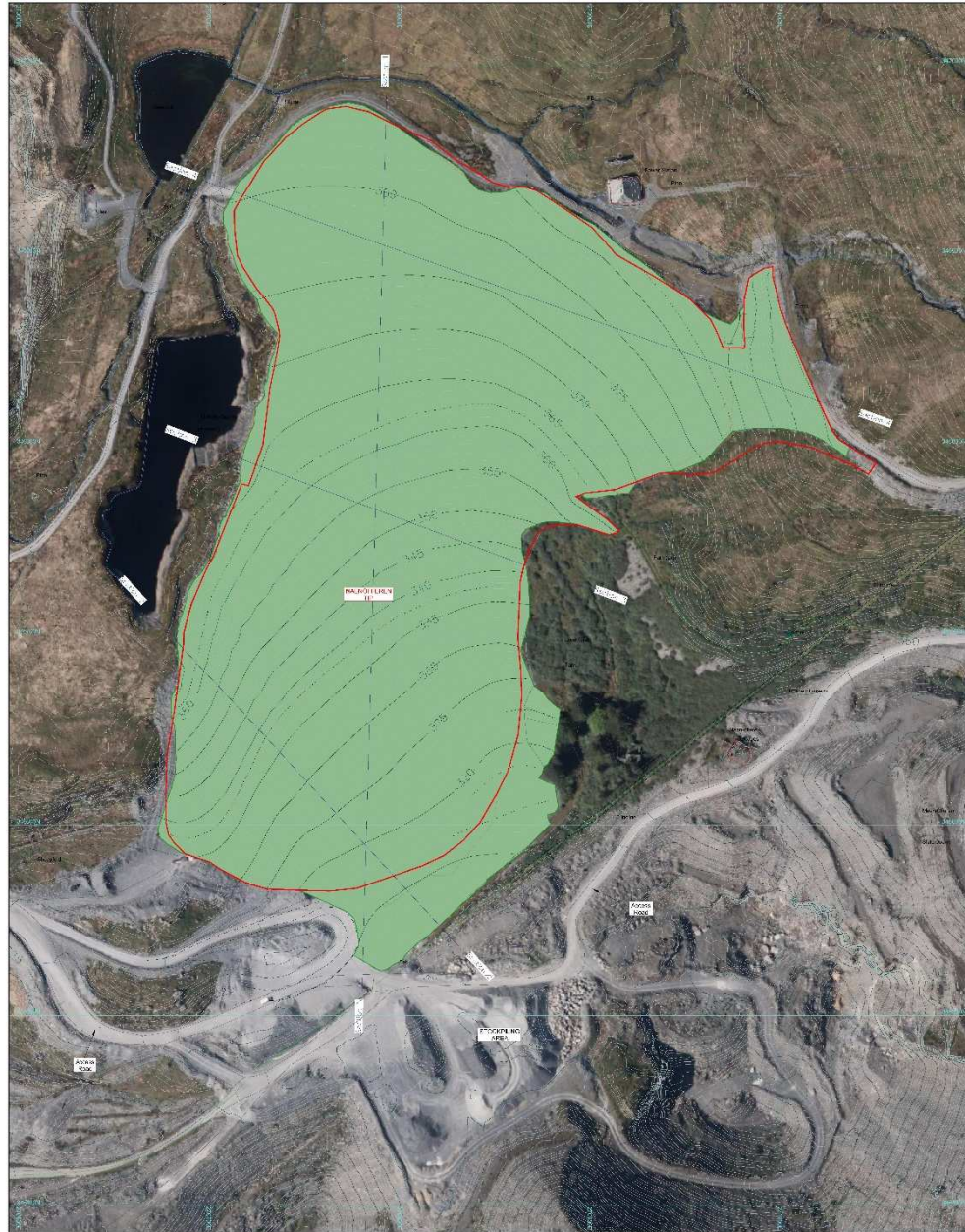


C20/0979/03/RA

Cais o dan A.73 i diddymu amod 2 (cyfyngiad amser) ac amrywio amod 3 (cynlluniau wedi eu diweddarau ar gyfer symud deunydd, adfer ac ôl-ofal y safle) ar ganiatad cynllunio C99M/0105/03/MW ar gyfer symud deunydd o ddyddodion gweithio mwynau

Application under S.73 to remove condition 2 (time limit) & vary to condition 3 (updated plans for the removal of material, restoration and aftercare of the site) on planning permission C99M/0105/03/MW for The Removal of Material from a mineral-working deposit

Spoil Heap 557m From Quarry Tours Ltd, Llechwedd Slate Caverns 115m From Unnamed Road Bodafon, Blaenau Ffestiniog, LL41 3NB



01.001



**WELSH SLATE
& STONE LTD**

WELSH SLATE & STONE LTD
 Registered in Wales
 Registered Office: 10, The Quadrant, Maesteg, Gwynedd, North Wales, LL23 7JG
 Registered Number: 104800000
 VAT Number: 214 000 000



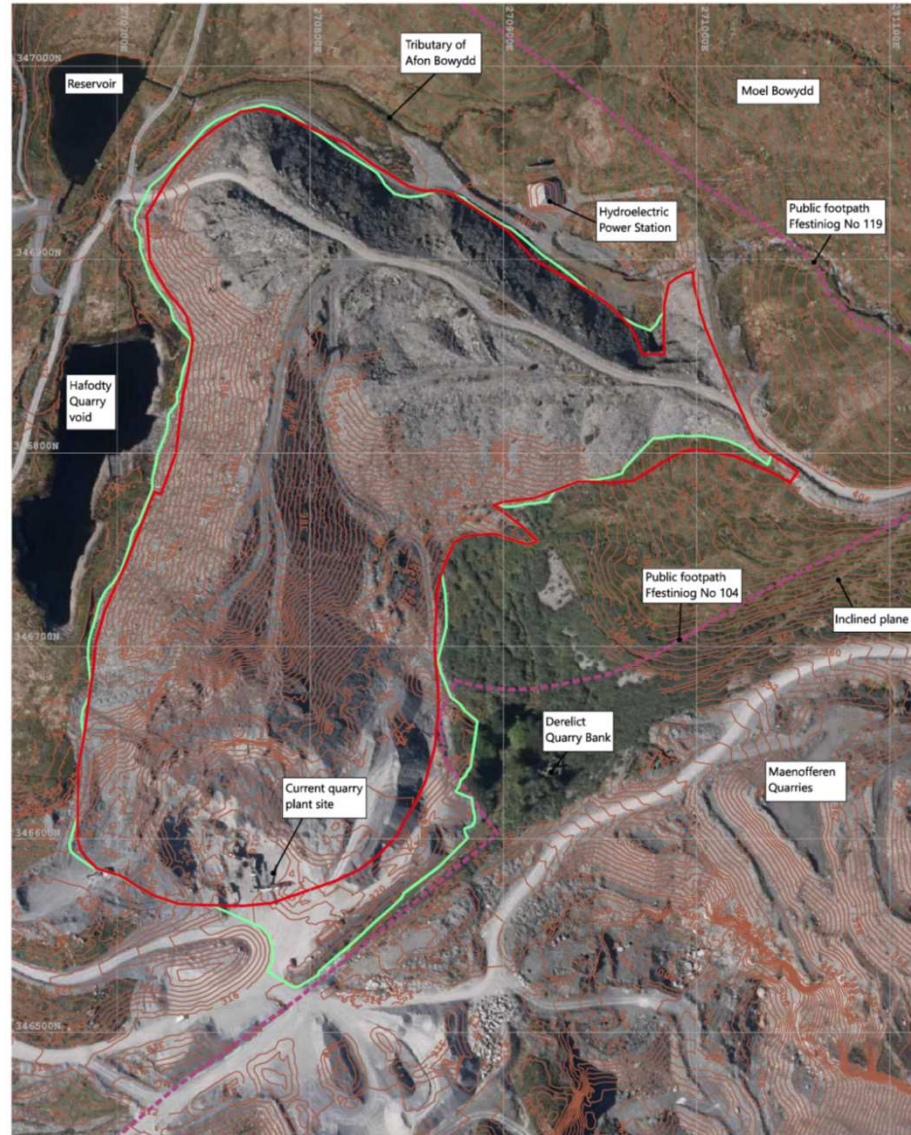
Key GeoSolutions Ltd

PROJECT: MAENOFFEREN QUARRY
 LLECHWEDD SLATE MINE

TITLE: PROPOSED RESTORATION
 PLAN FOR
 MAENOFFEREN TIP

Client:	WR	Checked:	BD	Date:	Nov 20
Scale:	1:1250	Checked (By):	GC	Stage:	DRAFT
Drawn by:		Drawn (By):		Drawn (Date):	

19-404-D-002 01



LEGEND

- Boundary of Planning Permission reference C99M/0105/03/MW
- Tip boundary
- Approximate alignment of Public Footpath

Northern Welsh Quarries Ltd

Maenofferen Quarry
Llechweidi Slate Mine

Existing Situation at Maenofferen Tip

1:1250 @ A3	KH	Nov 20
1:3500 @ A4		

L13_LAN_001







