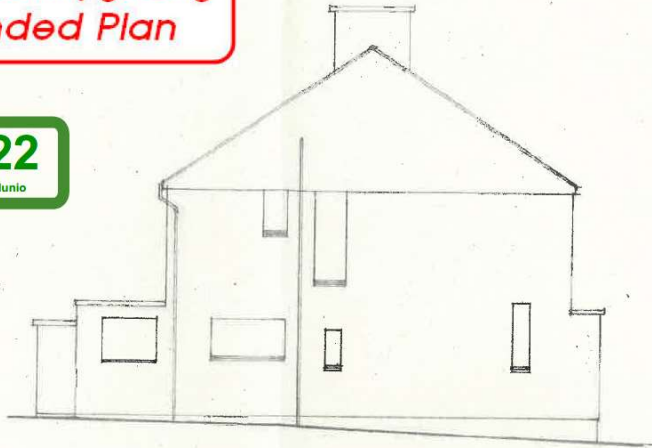


**Cynllun Diwygiedig
Amended Plan**

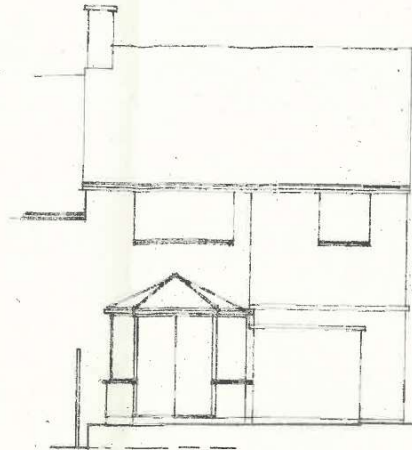
03/05/22

DERBYN - Adras Cynllunio



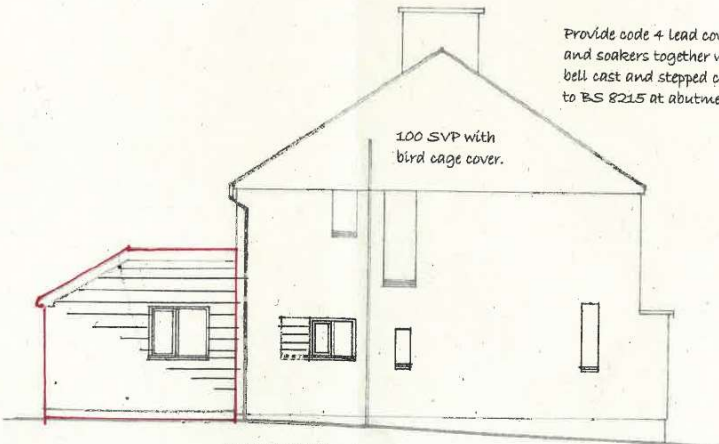
SIDE

EXISTING ELEVATIONS



REAR

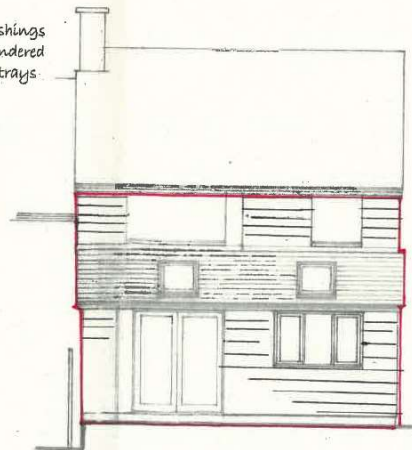
1:100



New window in reduced opening.

Provide code 4 lead cover flashings and soakers together with rendered bell cast and stepped cavity trays to BS 8215 at abutment.

100 SVP with bird cage cover.



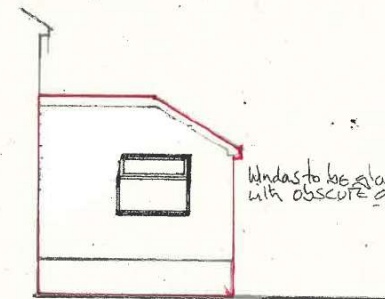
REAR

FINISHES:

- Roof. Welsh slates with matching interlocking ridge tiles. All tiles to be mechanically fixed in accord with BS5534
- Walls. ~~Sp. masonry with mortar pointing~~
- Windows. Double glazed PVC-U with 24mm units. U value - 1.60 W/M2 deg K and 65mm diam. rw pipes.
- Roofline. Welsh celuka fascias, barge and soffites. 100 hr pvc-u gutters.
- Glazing. All glazing to doors and all windows with a cill height less than 800mm above fl. and windows within 300mm of doors to be glazed with kite marked safety glass complying with BS6206.

Walls - pvc-u grey coloured cladding

Provide velux roof windows ref GGL2070 UK04 in openings formed with double rafters.



Windows to be glazed with obscure glass.

SIDE

PROPOSED ELEVATIONS

SIDE

1:100

