

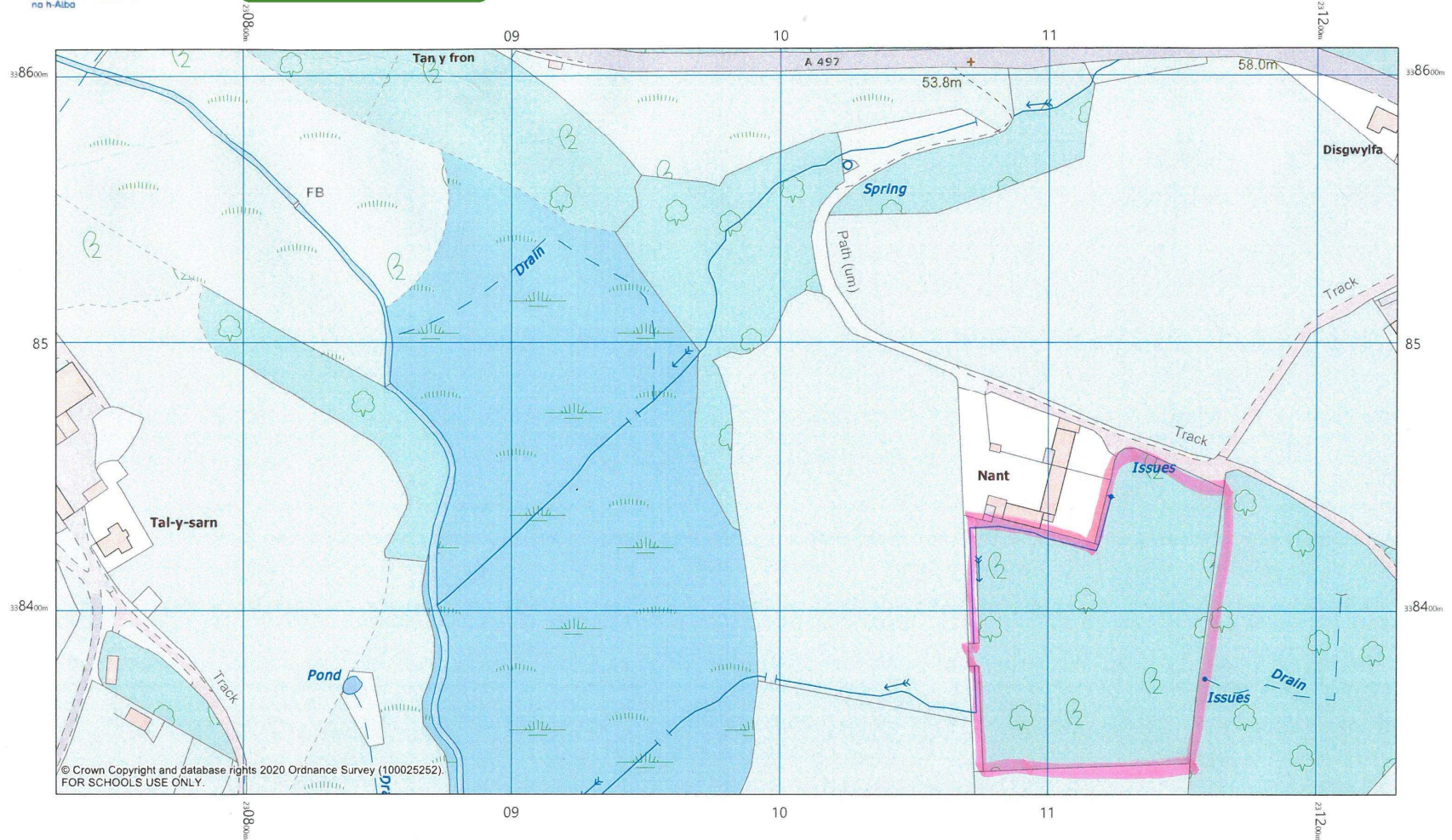
Derbyn

ar 12/07/2021

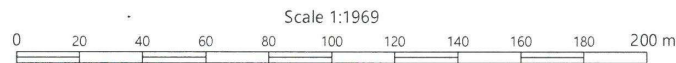
National Library
of Scotland
Leabharlann Nàiseanta
na h-Alba

Nant Nantbach map

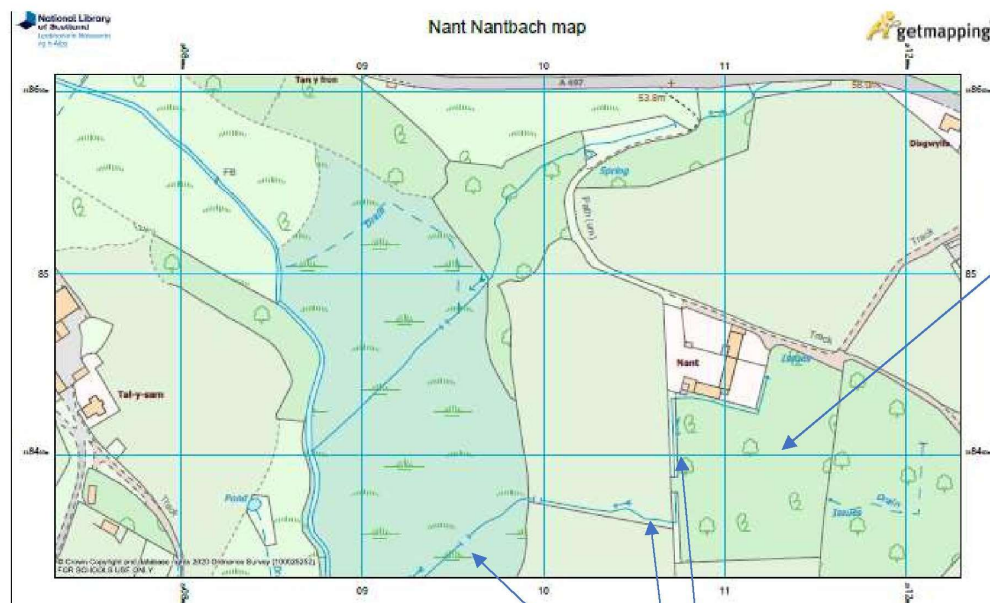
getmapping®



Digimap for Schools



Sep 25, 2020 11:02
Saint Ambrose College



Proposed camping pod field.

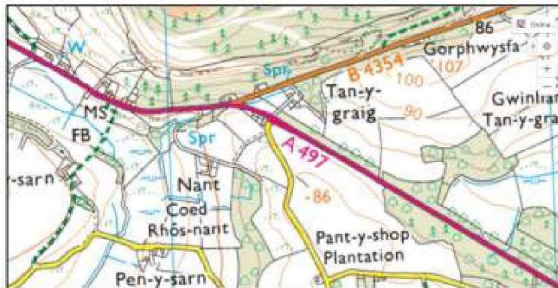
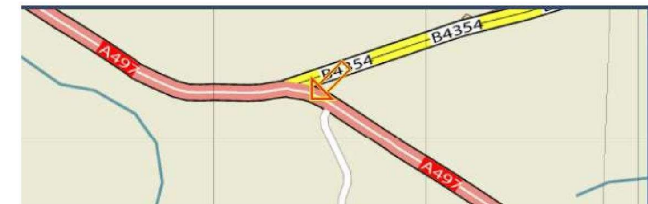
Domestic sewage treatment plant discharging clear water into existing soak away system that runs onto neighbouring farmers land and onto the Site of Special Scientific Interest and Special Protected Ara.

Proposed Eco Campsite, Nant, Boduan, Pwllheli LL53, Site Plan & Landscaping

Planning Application Reference: PP-09916563

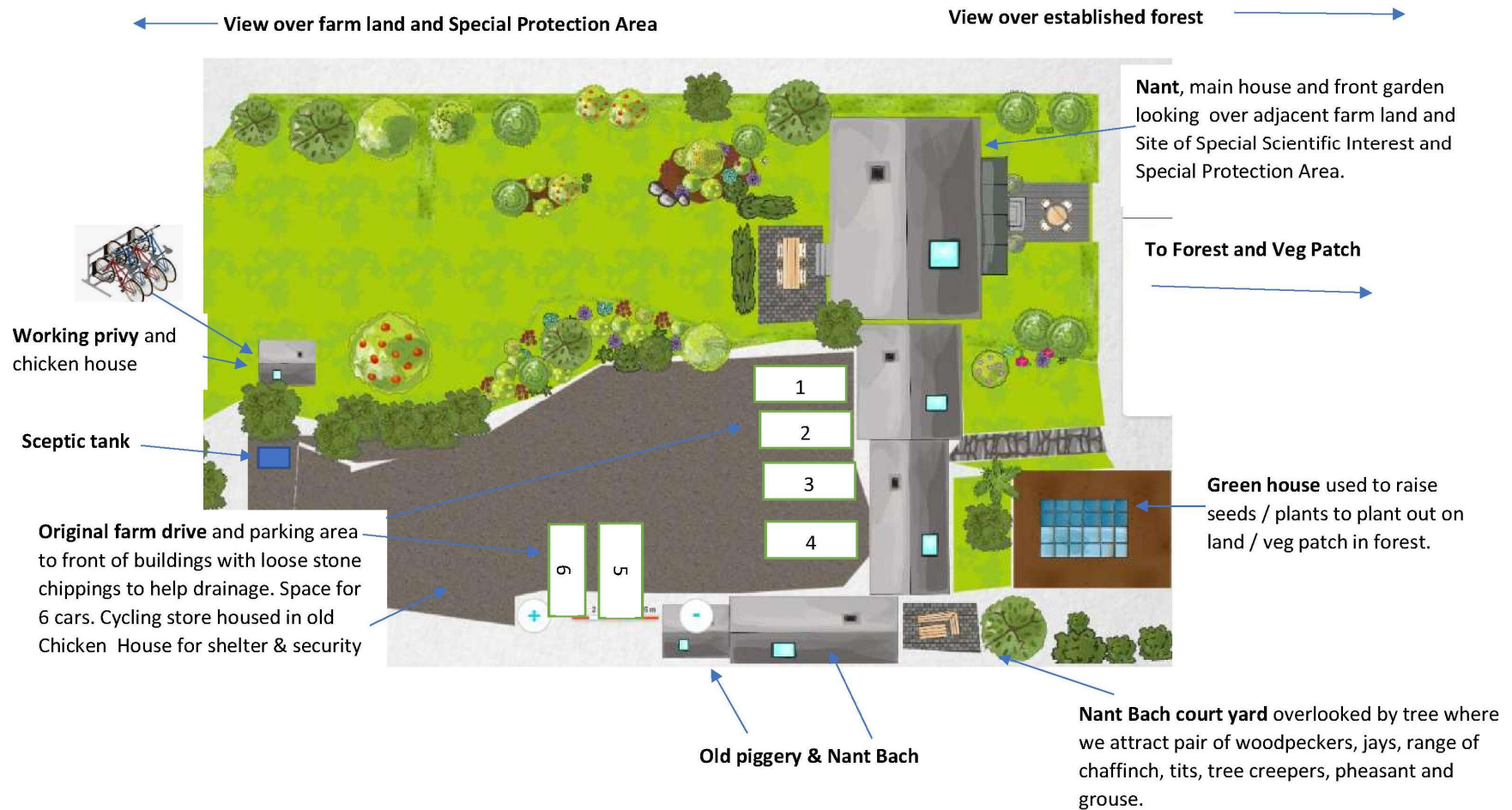
Plan 1 Entrance to the site will be off B road from the A497 Nefyn / Pwllheli road, onto original farm track, utilising right of way for Nant.

Proposed Eco Campsite, Nant, Boduan, Pwllheli LL53, Site Plan & Landscaping Planning Application Reference: PP-09916563 Alternative Entrance/Exit through adjoining farmland

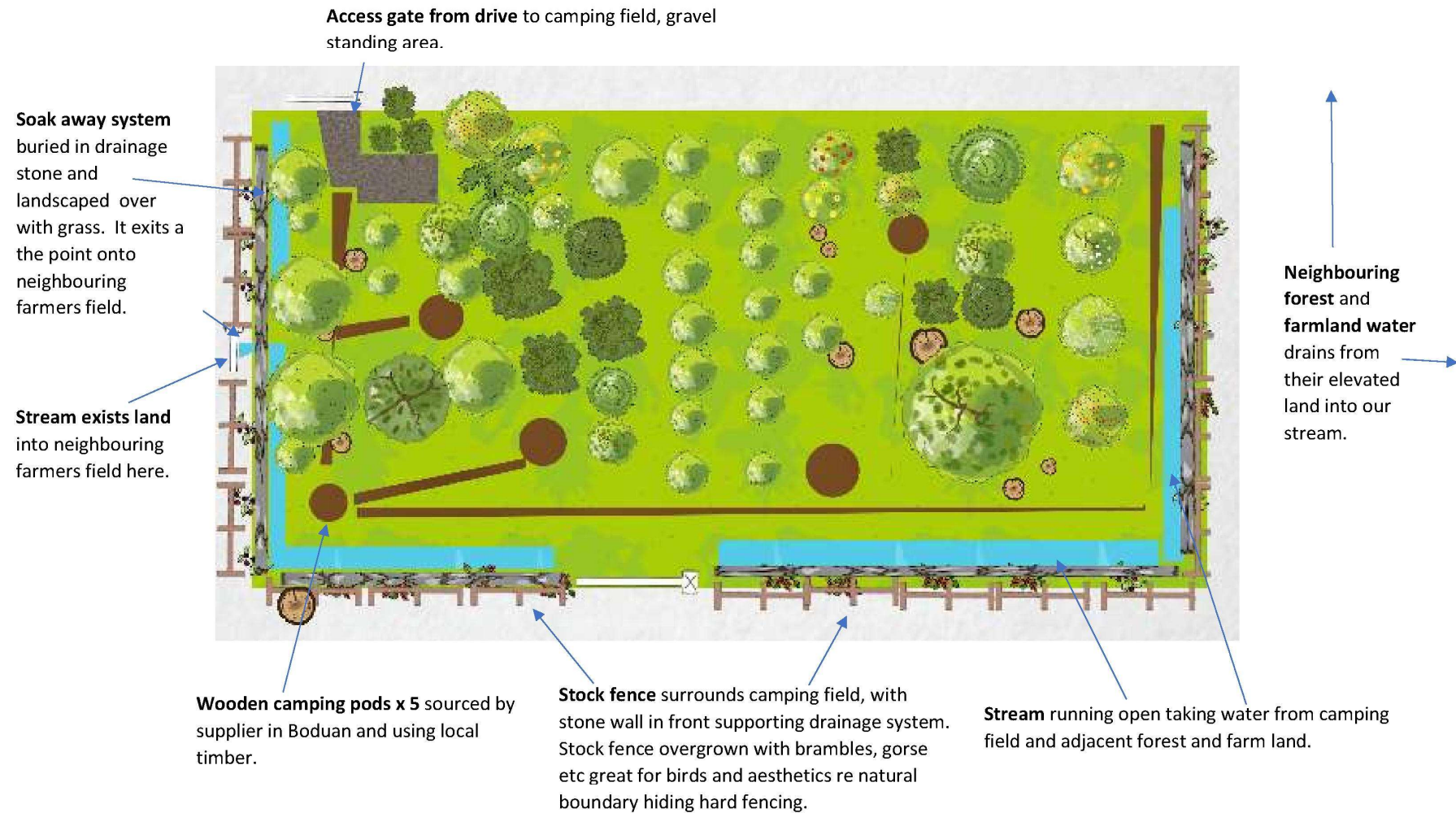


Alternative route to Nant utilising Right of Way exiting on side road off A497. Roadway to be constructed from Nant over field to exit gate. Improvements to gate and exit to be undertaken by Civils Contractor. This route offers access to a much less well used country road with users able to turn left and join the A497 at the nearby junction. Sighting is excellent in both directions from the exit.

Plan 2 Nant & Nant Bach and buildings, situation in mature gardens to all sides. Forest lies at the back of both houses and is planted in a mixture of hazel, birch, willow and conifer to name but a few and is the location of our proposed camping pods and tent plots.



Plan 3 Proposed camping field and drainage system surrounding field. Field has been planted with c. 1000 trees at varying stages of maturity.

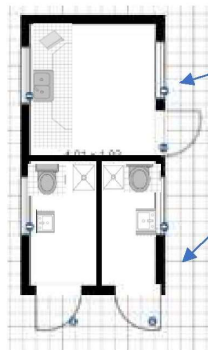


Plan 4 Facilities – toilet, shower, washing up block

Proposed facilities building at running alongside gravel standing supported by new Domestic Sewage Treatment plant conforming to full BSEN standards.



Facilities Building Layout



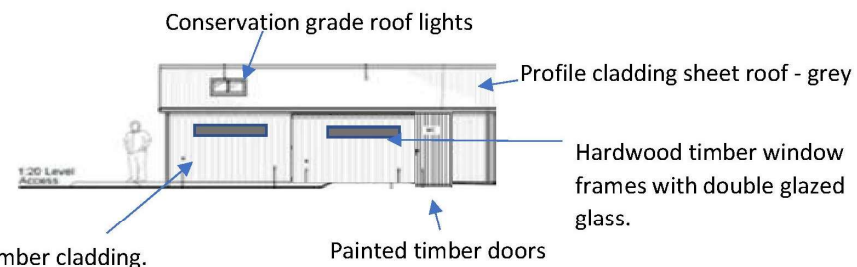
Washing up,
laundry facility
room.

Separate male
and female,
wheelchair
friendly show
room.



High level permanently open louver for background
ventilation with mesh to stop insects / birds.

Painted timber doors



Conservation grade roof lights

Profile cladding sheet roof - grey

Hardwood timber window
frames with double glazed
glass.

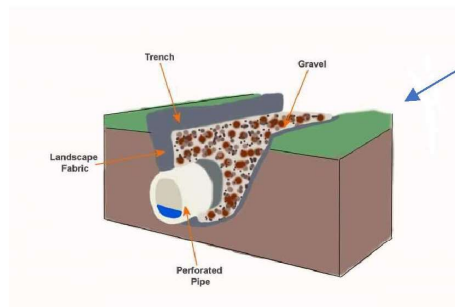
Painted timber doors

Vertical larch timber cladding.

Plan 5 Drainage layout



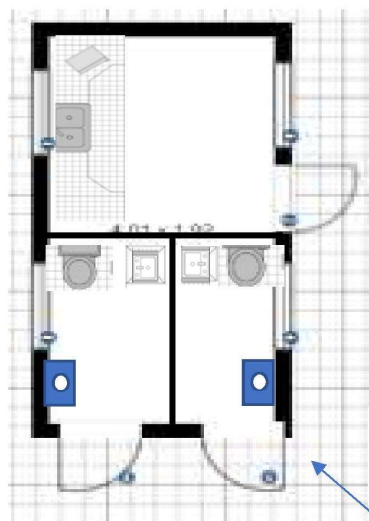
Location of drainage field : materials used include, perforated pipes laid in trenches 300mm wide and backfilled with 20mm gravel. The trench is c. 700mm deep. This has been landscaped over with grass and flows into adjoining farmers field.



Plan 6 Digimap of Nant, Boduan, LL53 8YE showing watercourse of drainage.

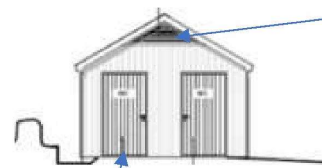
Plan 9 Facilities unit specification

Facilities Building Layout

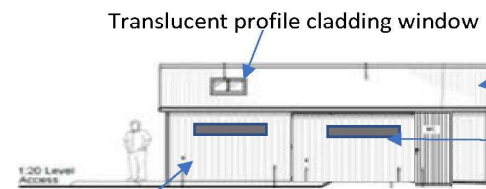


Washing up,
laundry facility
room.

Separate male
and female,
wheelchair
friendly show
room.



Painted timber doors



1.20 Level
Access

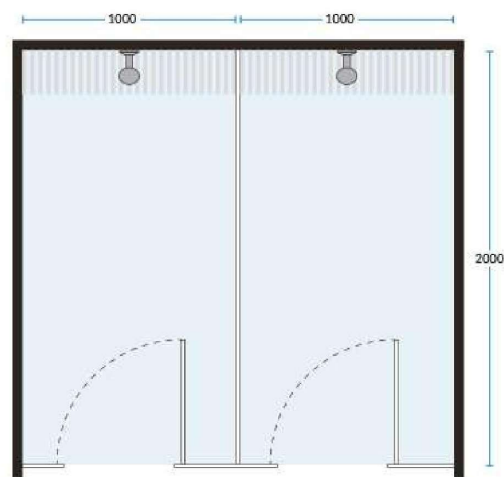
Vertical larch timber cladding.

Painted timber doors

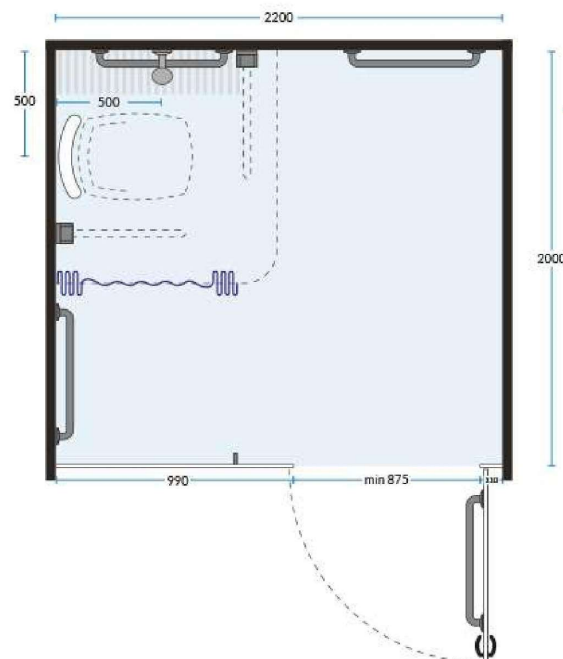
Floor space 32ft x 10 ft

Plan 10 Facilities internal fitting specification

Single person shower cubicles



Disabled shower cubicle



A 500mm x 500mm tip-up shower seat will be set in a corner with grab rails set on shower head wall. A privacy curtain, drop-down grab rail and emergency pull-cord with two red triangles will be fitted. The door will have a minimum clearance of 875mm and open outwardly. A horizontal door pull (or grab rail) will be fitted on the door interior to enable the door to be closed when entering.



Shower cubicle sizes

Wall panel system

Full-height panel system will protect walls and are more hygienic and easier to clean than painted walls.



Shower room will consist of commercial shower, toilet and wash basin with push taps on both the shower and the basin to reduce water wastage.

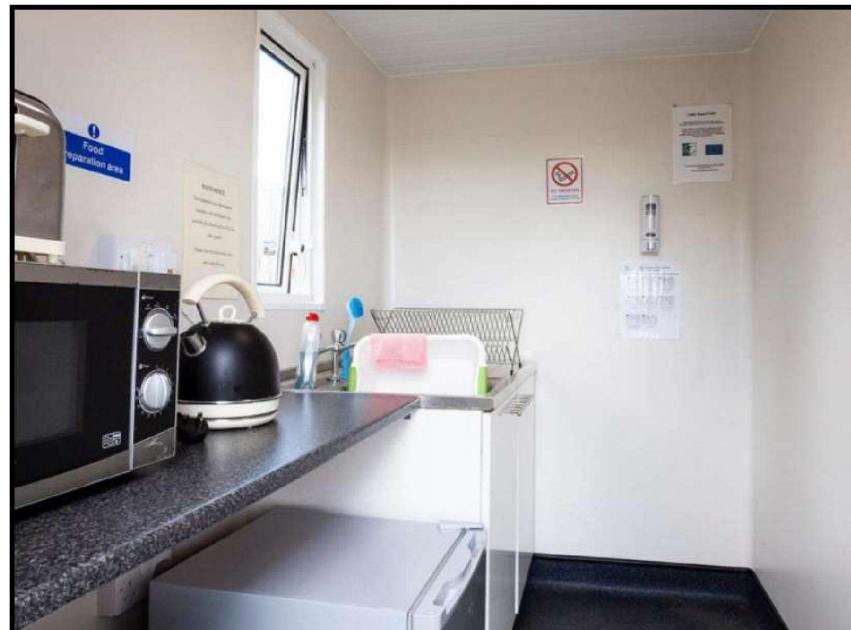
Internal lighting will be activated by timer with push button switch, again to conserve energy usage.

Outside lights will be sensor activated during the hours of darkness to reduce light pollution.

High, slimline open windows will help **ventilation** in addition to extractor that operates when the shower is in use.

Washing up and waste disposal facilities at rear of Facilities building

A washing-up area, guest freezer for ice blocks, charging point for mobile phones, microwave, toaster and kettle.



Proposed Eco Campsite, Nant, Boduan, Pwllheli LL53, Camping Pods

Planning Application Reference: C21/0573/33/LL

Please see the alternative camping pods we would look to use on our campsite rather than the traditional wooden structures. These are more portable and provide accommodation that would be unique to this part of the peninsula which Visit Wales would be able to add to their array of accommodation on offer. There are considerably more expensive than the traditional wooden structure however we hope you understand we want our site to enhance the beautiful surroundings and bring customers closer to nature in our forest which these landpods do.

We still propose to limited occupation to 2 per landpod as with the wooden structure so max capacity 10 people at any one time. This size pod is just more roomy than the 2 person version and enables guest to relax inside the pod if bad weather occurs.



Life's no fairytale but deep down we're all looking for some magic beans, prince charming, a talking donkey or a forest hideaway.

DIMENSIONS

Height: 3m Depth: 3m Width: 3m

Weight: 480KG

The Woodland Lodge

£11,234.00

PRODUCT INFO

Whats Included:

- Main structure that sleeps up to 4 adults & 1 child
- Thermal insulated PVC roof
- Adventure Pack (please see info sheet for more details)
- Landpod Power Hub with 2 USB charger ports and Solar Panel
- Internal sunken LED lighting and exterior solar light
- Carpet or Astro Turf flooring
- Blackout curtains











