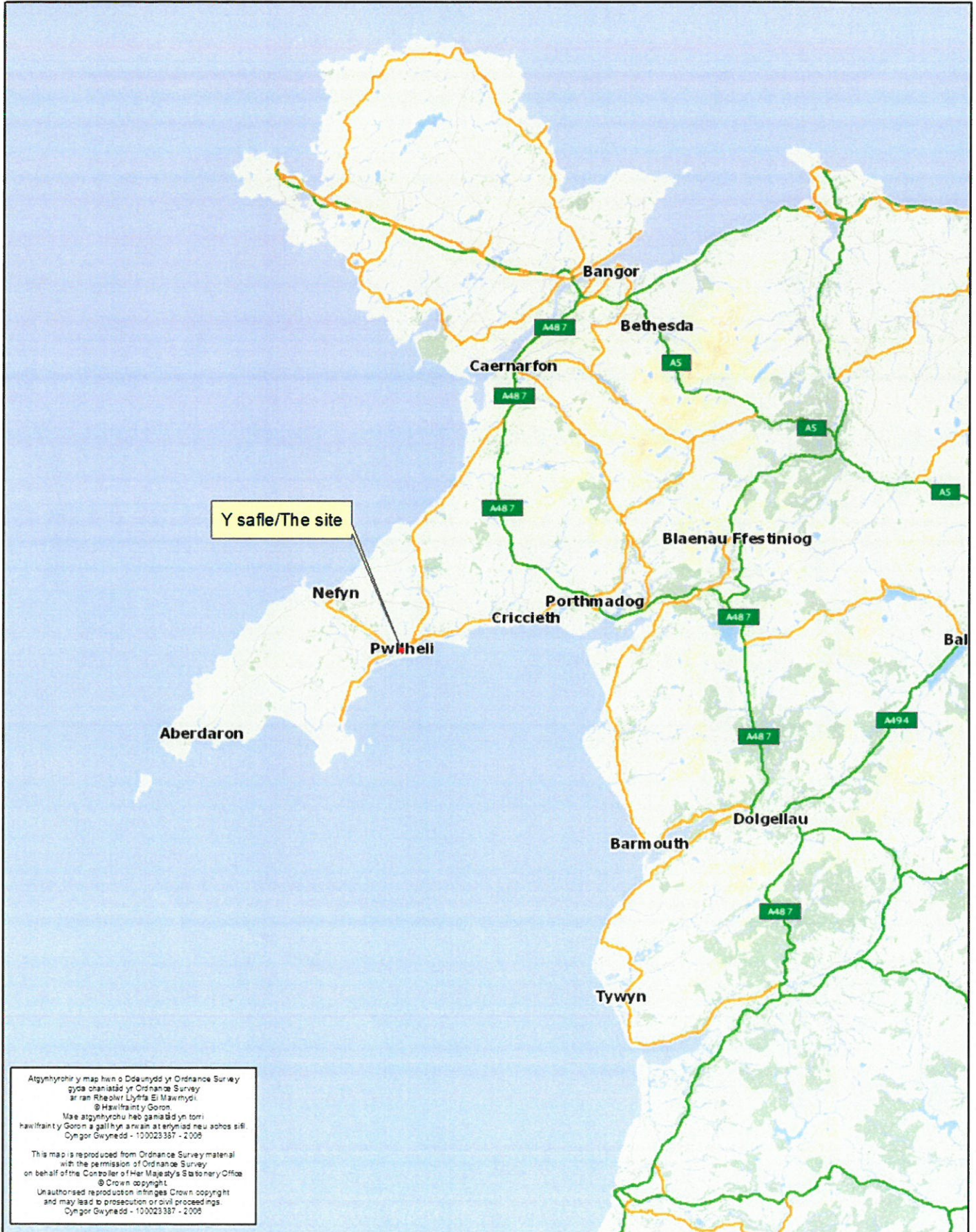


Rhif y Cais / Application Number : C14/1118/45/LL

Cynllun lleoliad ar gyfer adnabod y safle yn unig. Dim i raddfa.
Location Plan for identification purposes only. Not to scale.



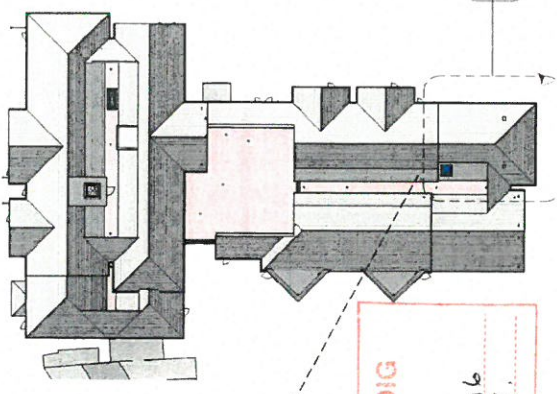
Atgynhyrchir y map hon o Ddeunyddi yr Ordnance Survey gyda chaniatâd yr Ordnance Survey ar ran Rheolwr Llyfrau Ei Mawrmyd.
© Hawlfraint y Goron.
Mae atgynhyrchu heb ganiatâd yn torri hawlfraint y Goron a gall hyn arwain at ennydd neu achos siŵl.
Dyngor Gwynedd - 100023357 - 2005

This map is reproduced from Ordnance Survey material with the permission of Ordnance Survey on behalf of the Controller of Her Majesty's Stationery Office.
© Crown copyright.
Unauthorised reproduction infringes Crown copyright and may lead to prosecution or civil proceedings.
Dyngor Gwynedd - 100023357 - 2005

1. CHECK SCALE FROM THIS DRAWING - USE FIGURED DIMENSIONS ONLY
2. TO BE READ IN CONJUNCTION WITH ALL OTHER CONSULTANT'S SPECIALIST DRAWINGS. REPORT ANY DISCREPANCIES BEFORE AFFECTED WORK COMMENCES
3. ALL CUTTING AND DIMENSIONS TO BE CHECKED ON SITE BY CONTRACTOR BEFORE WORK COMMENCES.

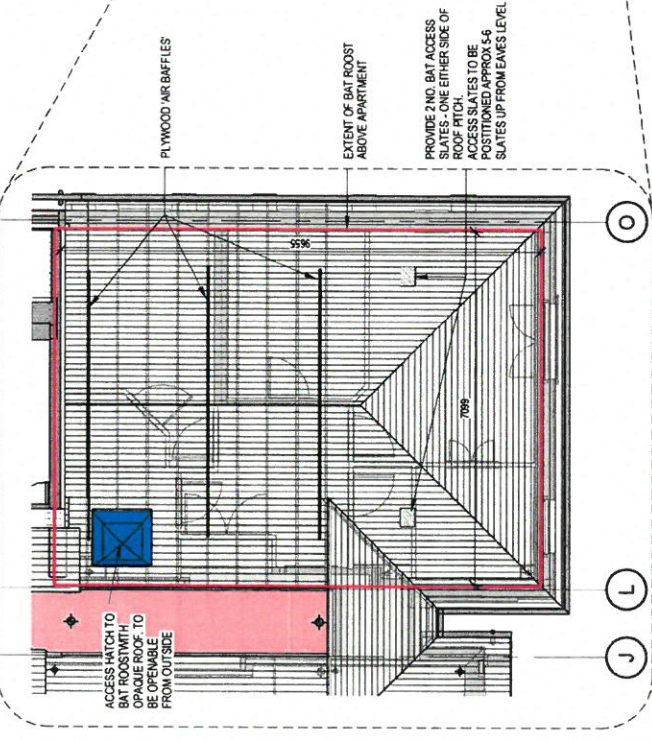
CYNGOR GWYNEDD
ADRIAN RHEOLEDDIG
3 - GŵR LUD
GWASANAETH CYMRUOLIG AC
AMGYLCHEDD
AMFTRAC

DATE: 28.01.18
BY: [Signature]
REVISIONS:
A: Air baffles updated to bat man's comments. 03.02.18

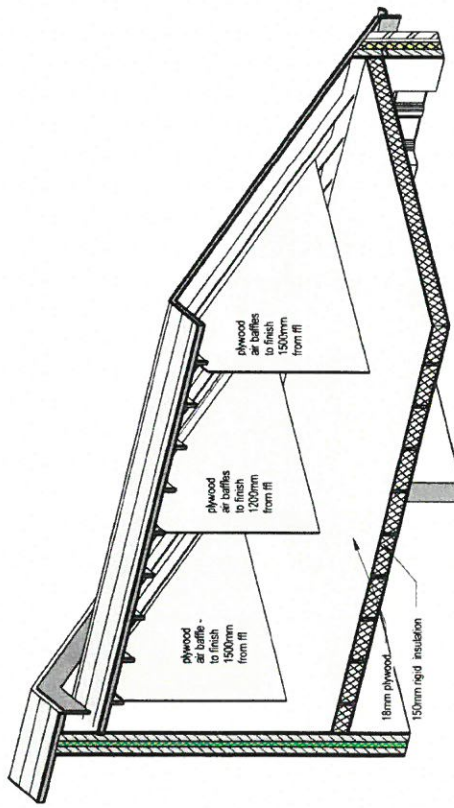


3 Roof Plan - Reference
1:500

CYNLLUN DIWYGIEDIG
REVISED PLAN
#byhwyd/Received 3/2/16
#lloyd/signature



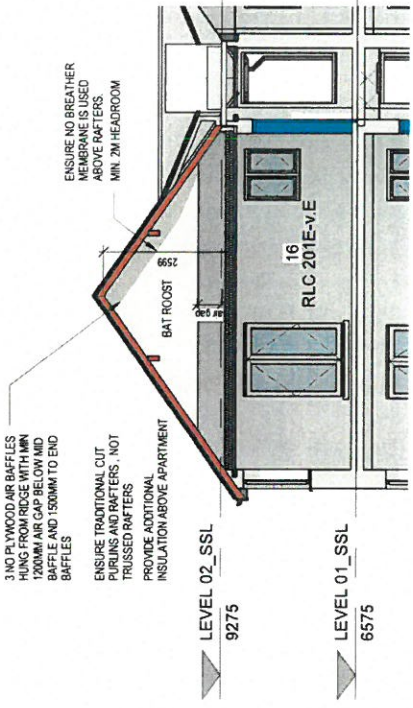
1 PLAN SHOWING EXTENT OF BAT ROOST
1:100



4 BAT ROOST_AXO

0 1m 2m 5m
1:100

Retirement Living Housing (RLC), Ala Road, Pwllheli
Bat Roost Details



2 SECTION THROUGH BAT ROOST
1:100

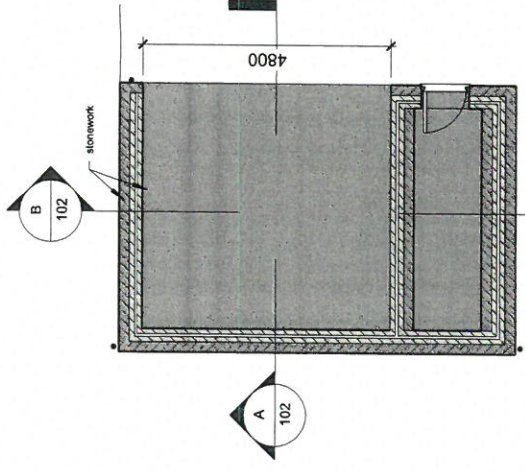
© McCarthy & Stone Retirement Living (RLC)
Drawing No: 2009/104

client:	McCarthy & Stone
project:	Retirement Living Housing (RLC), Ala Road, Pwllheli
drawing title:	Bat Roost Details
drawing number:	(2009) 104
revision:	A
drawing status:	Preliminary
scale:	As indicated @ A3
date:	12/04/15
drawn by:	AH
checked by:	IC

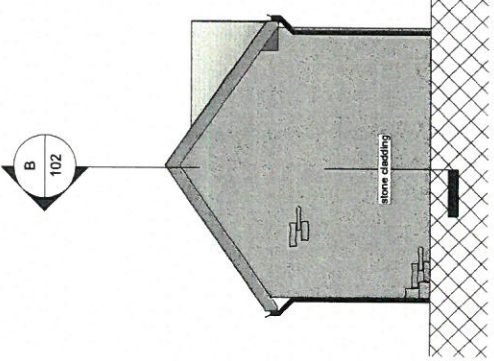
seven
McCarthy & Stone
100, Victoria Road, Manchester, M13 9PL
0161 275 1000
0161 275 1001
0161 275 1002
0161 275 1003
0161 275 1004
0161 275 1005
0161 275 1006
0161 275 1007
0161 275 1008
0161 275 1009
0161 275 1010
0161 275 1011
0161 275 1012
0161 275 1013
0161 275 1014
0161 275 1015
0161 275 1016
0161 275 1017
0161 275 1018
0161 275 1019
0161 275 1020

- NOTES**
1. DO NOT SCALE FROM THIS DRAWING - USE FIGURED DIMENSIONS ONLY.
 2. TO BE READ IN CONJUNCTION WITH ALL OTHER DRAWINGS IN THIS SET.
 3. ALL SETTINGS OF BOLTS AND NUTS TO BE CHECKED ON SITE BY CONTRACTOR BEFORE WORK COMMENCES.

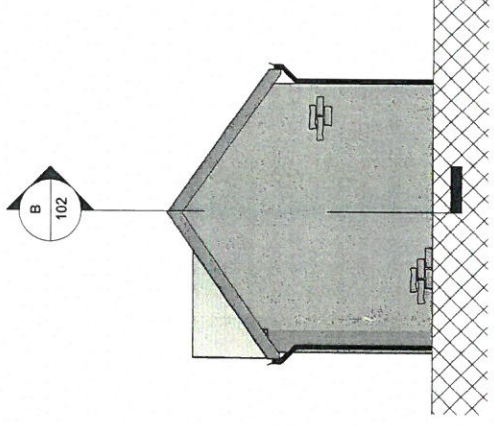
LYNGOR GWYNEDD
ADRAM RHEGLEIDDIO
23 HYB 200
GWASANAETH CYNLLWROAC
AMGYLCHUS
LIFT TRAC



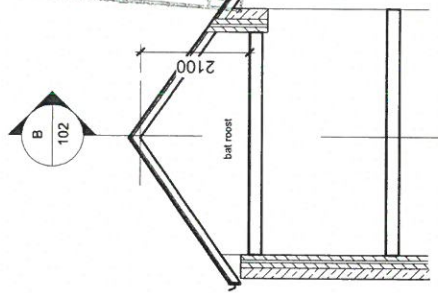
level 0
1 : 100



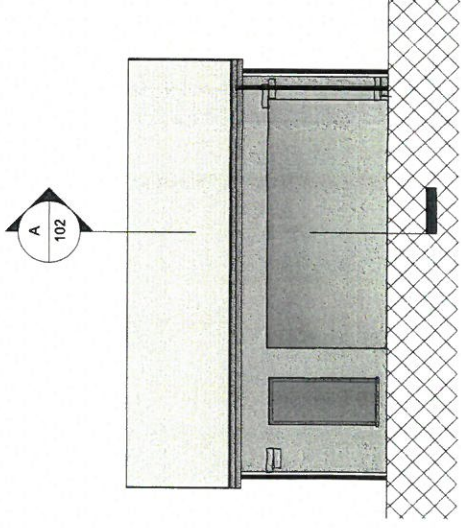
elevation c
1 : 100



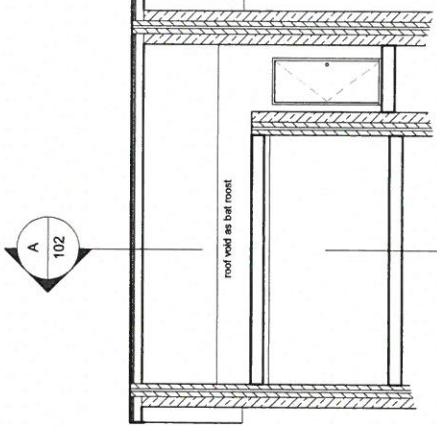
elevation d
1 : 100



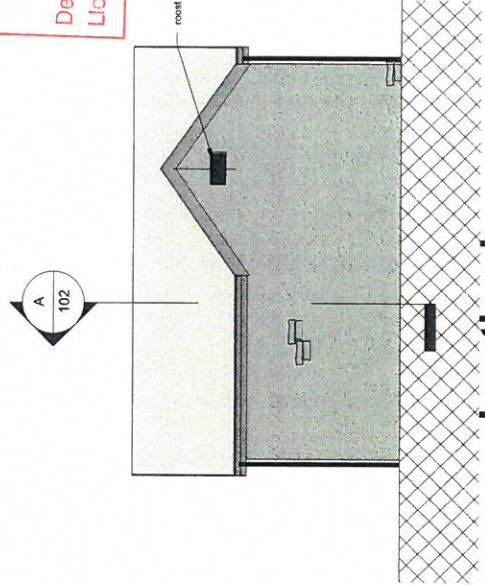
section a
1 : 100



elevation a
1 : 100



section b
1 : 100



elevation b
1 : 100

roof access

GWYBODAETH YCHWANEGOL
ADDITIONAL INFORMATION
Derbyniwyd/Received 23/10/15
Llofnod/signature [Signature]

- revisions**
- | | | |
|---|---|----------|
| A | opening return plate removed | 01/04/15 |
| B | roof cladding removed | 10/04/15 |
| C | roof construction details
adding stone to both walls of the
roof access | 20/04/15 |

client
Mc Carthy & Stone
Retirement Living Housing, Ala
Road, Pwllheli

project

drawing title Proposed car port and batt roost
drawing number 014152_102
revision C
drawing status Preliminary
scale 1 : 100 @ A3
date 29/09/15
drawn by AJR
checked by IC

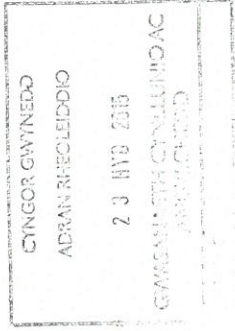
seven ARCHITECTS

seven architects office ltd
110105 23A 2005, MANCHESTER, M1 4EG
Carden House, Victoria Avenue, MARRIGATE, North Yorks YO21 1DY
14 (2) 79 881, LONDON EC1N 8ES
1 2027 034 001
Gabe & Doc Victoria, CARMARPHON, Gwent NP23 5SD
01298 885 231
www.sevenarchitects.co.uk



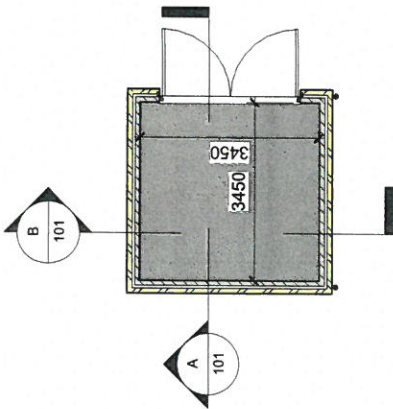
NOTES

1. DO NOT SCALE FROM THIS DRAWING - USE FIGURED DIMENSIONS ONLY.
2. TO BE READ IN CONJUNCTION WITH ALL OTHER DRAWINGS AND SPECIFICATIONS. ANY DISCREPANCIES BEFORE AFFECTED WORK COMMENCES.
3. ALL SETTING OUT DIMENSIONS TO BE CHECKED ON SITE BY CONTRACTOR BEFORE WORK COMMENCES.

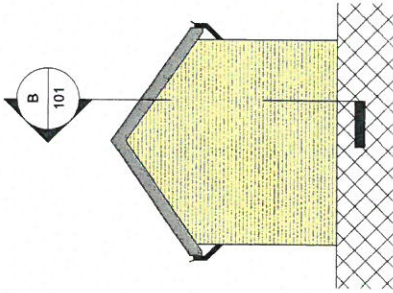


REVISIONS

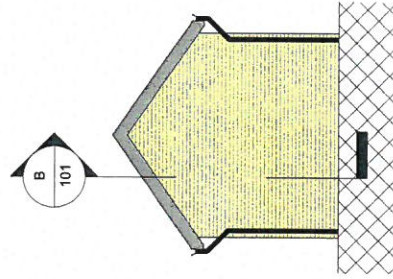
A	Revised to suit end-user comments	30 Jun 15
B <td>Use steel mesh for roof with sloping roof instead of flat and scooter store requirements <th>21 Sep 15</th> </td>	Use steel mesh for roof with sloping roof instead of flat and scooter store requirements <th>21 Sep 15</th>	21 Sep 15
C <td> <td></td> </td>	<td></td>	
D <td>Quantity increased to three sub-stations only <th>29 Sep 15</th> </td>	Quantity increased to three sub-stations only <th>29 Sep 15</th>	29 Sep 15



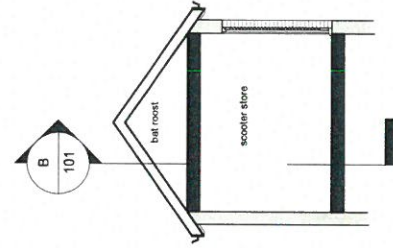
level 0
1 : 100



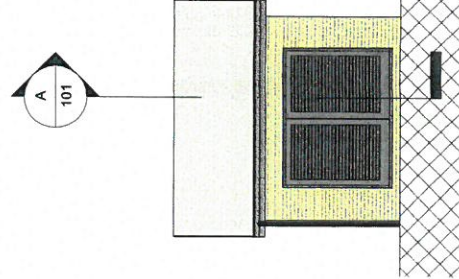
elevation c
1 : 100



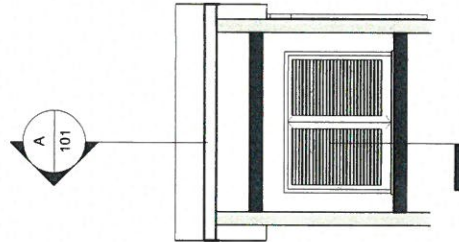
elevation d
1 : 100



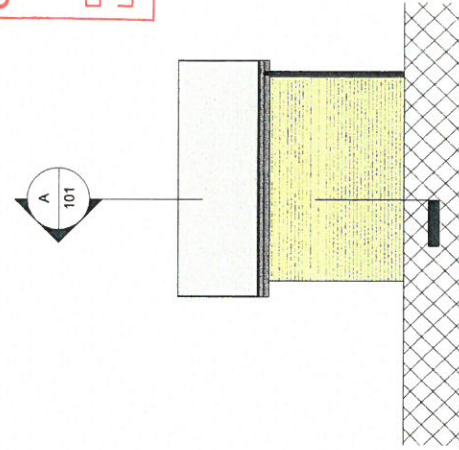
section a
1 : 100



elevation a
1 : 100



section b
1 : 100



elevation b
1 : 100

GWYBODAETH YCHWANEGOL
ADDITIONAL INFORMATION
Derbyniwyd/Received... 23.10.15
Llofnod/signature...

client	Mc Carthy & Stone
project	Retirement Living Housing, Ala Road, Pwllheli
drawing title	Electrical Sub Station
drawing number	014152 (2009)_101
revision	D
drawing status	Preliminary
scale	1 : 100 @ A3
date	01/23/07
drawn by	AUR
checked by	KC



Retirement Living Housing, Ala Road, Pwllheli
Electrical Sub Station

seven architects

77 Colindale Avenue, Colindale, London, NW9 1BE
 020 8850 6000
 24 Oracle Street, London, EC1A 8ES
 020 7318 9881

www.sevenarchitects.co.uk

Cynllun Diwygiedig Amended Plan



Proposed North Context Elevation



Proposed East Context Elevation



NOTES

DO NOT SCALE FROM THIS DRAWING - WORK FROM DIMENSIONS. DIMENSIONS TAKE PRECEDENCE OVER VISUAL REPRESENTATION. ALL DIMENSIONS TO BE CHECKED ON SITE BY CONTRACTOR BEFORE COMMENCEMENT OF WORK. TO BE READ IN CONJUNCTION WITH ALL OTHER CONSULTANTS' PARTICULARS TO THE ARCHITECT AT ONCE BEFORE PROCEEDING.

REV. DESCRIPTION
 1. 21/01/14 ZH IC
 A. Update drawing information ZH IC
 B. Update drawing information ZH IC
 C. Drawings amended following planning development.

McCarthy & Stone
 Land Use, Creative Ltd.

© McCarthy & Stone Retirement Utilities Limited
 All rights reserved. The work shown on this plan is the property of McCarthy & Stone Retirement Utilities Limited. No part of this work may be reproduced, stored in a retrieval system, or transmitted in any form or by any means, electronic, mechanical, photocopying, recording, or by any information storage and retrieval system, without the prior written permission of McCarthy & Stone Retirement Utilities Limited.

Project: Retirement Living Housing
 All Road
 Purfleet

Drawing No: 014152(2009)
 Drawing Number: 014152(2009)-1-05
 Revision: Rev A
 Drawing Status: Planning
 Code: 1,200 @A1
 Date: 31.10.14
 Drawn by: ZH
 Checked by: IC

Context Elevations - Sheet 1 of 2

seven
 CONSULTANTS

7 Seven
 1100724 Road
 WANDSWORTH, W8 7ED
 020 8996 9000
 020 8996 9001
 020 8996 9002
 020 8996 9003
 020 8996 9004
 020 8996 9005
 020 8996 9006
 020 8996 9007
 020 8996 9008
 020 8996 9009
 020 8996 9010
 020 8996 9011
 020 8996 9012
 020 8996 9013
 020 8996 9014
 020 8996 9015
 020 8996 9016
 020 8996 9017
 020 8996 9018
 020 8996 9019
 020 8996 9020
 020 8996 9021
 020 8996 9022
 020 8996 9023
 020 8996 9024
 020 8996 9025
 020 8996 9026
 020 8996 9027
 020 8996 9028
 020 8996 9029
 020 8996 9030
 020 8996 9031
 020 8996 9032
 020 8996 9033
 020 8996 9034
 020 8996 9035
 020 8996 9036
 020 8996 9037
 020 8996 9038
 020 8996 9039
 020 8996 9040
 020 8996 9041
 020 8996 9042
 020 8996 9043
 020 8996 9044
 020 8996 9045
 020 8996 9046
 020 8996 9047
 020 8996 9048
 020 8996 9049
 020 8996 9050
 020 8996 9051
 020 8996 9052
 020 8996 9053
 020 8996 9054
 020 8996 9055
 020 8996 9056
 020 8996 9057
 020 8996 9058
 020 8996 9059
 020 8996 9060
 020 8996 9061
 020 8996 9062
 020 8996 9063
 020 8996 9064
 020 8996 9065
 020 8996 9066
 020 8996 9067
 020 8996 9068
 020 8996 9069
 020 8996 9070
 020 8996 9071
 020 8996 9072
 020 8996 9073
 020 8996 9074
 020 8996 9075
 020 8996 9076
 020 8996 9077
 020 8996 9078
 020 8996 9079
 020 8996 9080
 020 8996 9081
 020 8996 9082
 020 8996 9083
 020 8996 9084
 020 8996 9085
 020 8996 9086
 020 8996 9087
 020 8996 9088
 020 8996 9089
 020 8996 9090
 020 8996 9091
 020 8996 9092
 020 8996 9093
 020 8996 9094
 020 8996 9095
 020 8996 9096
 020 8996 9097
 020 8996 9098
 020 8996 9099
 020 8996 9100
 020 8996 9101
 020 8996 9102
 020 8996 9103
 020 8996 9104
 020 8996 9105
 020 8996 9106
 020 8996 9107
 020 8996 9108
 020 8996 9109
 020 8996 9110
 020 8996 9111
 020 8996 9112
 020 8996 9113
 020 8996 9114
 020 8996 9115
 020 8996 9116
 020 8996 9117
 020 8996 9118
 020 8996 9119
 020 8996 9120
 020 8996 9121
 020 8996 9122
 020 8996 9123
 020 8996 9124
 020 8996 9125
 020 8996 9126
 020 8996 9127
 020 8996 9128
 020 8996 9129
 020 8996 9130
 020 8996 9131
 020 8996 9132
 020 8996 9133
 020 8996 9134
 020 8996 9135
 020 8996 9136
 020 8996 9137
 020 8996 9138
 020 8996 9139
 020 8996 9140
 020 8996 9141
 020 8996 9142
 020 8996 9143
 020 8996 9144
 020 8996 9145
 020 8996 9146
 020 8996 9147
 020 8996 9148
 020 8996 9149
 020 8996 9150
 020 8996 9151
 020 8996 9152
 020 8996 9153
 020 8996 9154
 020 8996 9155
 020 8996 9156
 020 8996 9157
 020 8996 9158
 020 8996 9159
 020 8996 9160
 020 8996 9161
 020 8996 9162
 020 8996 9163
 020 8996 9164
 020 8996 9165
 020 8996 9166
 020 8996 9167
 020 8996 9168
 020 8996 9169
 020 8996 9170
 020 8996 9171
 020 8996 9172
 020 8996 9173
 020 8996 9174
 020 8996 9175
 020 8996 9176
 020 8996 9177
 020 8996 9178
 020 8996 9179
 020 8996 9180
 020 8996 9181
 020 8996 9182
 020 8996 9183
 020 8996 9184
 020 8996 9185
 020 8996 9186
 020 8996 9187
 020 8996 9188
 020 8996 9189
 020 8996 9190
 020 8996 9191
 020 8996 9192
 020 8996 9193
 020 8996 9194
 020 8996 9195
 020 8996 9196
 020 8996 9197
 020 8996 9198
 020 8996 9199
 020 8996 9200
 020 8996 9201
 020 8996 9202
 020 8996 9203
 020 8996 9204
 020 8996 9205
 020 8996 9206
 020 8996 9207
 020 8996 9208
 020 8996 9209
 020 8996 9210
 020 8996 9211
 020 8996 9212
 020 8996 9213
 020 8996 9214
 020 8996 9215
 020 8996 9216
 020 8996 9217
 020 8996 9218
 020 8996 9219
 020 8996 9220
 020 8996 9221
 020 8996 9222
 020 8996 9223
 020 8996 9224
 020 8996 9225
 020 8996 9226
 020 8996 9227
 020 8996 9228
 020 8996 9229
 020 8996 9230
 020 8996 9231
 020 8996 9232
 020 8996 9233
 020 8996 9234
 020 8996 9235
 020 8996 9236
 020 8996 9237
 020 8996 9238
 020 8996 9239
 020 8996 9240
 020 8996 9241
 020 8996 9242
 020 8996 9243
 020 8996 9244
 020 8996 9245
 020 8996 9246
 020 8996 9247
 020 8996 9248
 020 8996 9249
 020 8996 9250
 020 8996 9251
 020 8996 9252
 020 8996 9253
 020 8996 9254
 020 8996 9255
 020 8996 9256
 020 8996 9257
 020 8996 9258
 020 8996 9259
 020 8996 9260
 020 8996 9261
 020 8996 9262
 020 8996 9263
 020 8996 9264
 020 8996 9265
 020 8996 9266
 020 8996 9267
 020 8996 9268
 020 8996 9269
 020 8996 9270
 020 8996 9271
 020 8996 9272
 020 8996 9273
 020 8996 9274
 020 8996 9275
 020 8996 9276
 020 8996 9277
 020 8996 9278
 020 8996 9279
 020 8996 9280
 020 8996 9281
 020 8996 9282
 020 8996 9283
 020 8996 9284
 020 8996 9285
 020 8996 9286
 020 8996 9287
 020 8996 9288
 020 8996 9289
 020 8996 9290
 020 8996 9291
 020 8996 9292
 020 8996 9293
 020 8996 9294
 020 8996 9295
 020 8996 9296
 020 8996 9297
 020 8996 9298
 020 8996 9299
 020 8996 9300
 020 8996 9301
 020 8996 9302
 020 8996 9303
 020 8996 9304
 020 8996 9305
 020 8996 9306
 020 8996 9307
 020 8996 9308
 020 8996 9309
 020 8996 9310
 020 8996 9311
 020 8996 9312
 020 8996 9313
 020 8996 9314
 020 8996 9315
 020 8996 9316
 020 8996 9317
 020 8996 9318
 020 8996 9319
 020 8996 9320
 020 8996 9321
 020 8996 9322
 020 8996 9323
 020 8996 9324
 020 8996 9325
 020 8996 9326
 020 8996 9327
 020 8996 9328
 020 8996 9329
 020 8996 9330
 020 8996 9331
 020 8996 9332
 020 8996 9333
 020 8996 9334
 020 8996 9335
 020 8996 9336
 020 8996 9337
 020 8996 9338
 020 8996 9339
 020 8996 9340
 020 8996 9341
 020 8996 9342
 020 8996 9343
 020 8996 9344
 020 8996 9345
 020 8996 9346
 020 8996 9347
 020 8996 9348
 020 8996 9349
 020 8996 9350
 020 8996 9351
 020 8996 9352
 020 8996 9353
 020 8996 9354
 020 8996 9355
 020 8996 9356
 020 8996 9357
 020 8996 9358
 020 8996 9359
 020 8996 9360
 020 8996 9361
 020 8996 9362
 020 8996 9363
 020 8996 9364
 020 8996 9365
 020 8996 9366
 020 8996 9367
 020 8996 9368
 020 8996 9369
 020 8996 9370
 020 8996 9371
 020 8996 9372
 020 8996 9373
 020 8996 9374
 020 8996 9375
 020 8996 9376
 020 8996 9377
 020 8996 9378
 020 8996 9379
 020 8996 9380
 020 8996 9381
 020 8996 9382
 020 8996 9383
 020 8996 9384
 020 8996 9385
 020 8996 9386
 020 8996 9387
 020 8996 9388
 020 8996 9389
 020 8996 9390
 020 8996 9391
 020 8996 9392
 020 8996 9393
 020 8996 9394
 020 8996 9395
 020 8996 9396
 020 8996 9397
 020 8996 9398
 020 8996 9399
 020 8996 9400
 020 8996 9401
 020 8996 9402
 020 8996 9403
 020 8996 9404
 020 8996 9405
 020 8996 9406
 020 8996 9407
 020 8996 9408
 020 8996 9409
 020 8996 9410
 020 8996 9411
 020 8996 9412
 020 8996 9413
 020 8996 9414
 020 8996 9415
 020 8996 9416
 020 8996 9417
 020 8996 9418
 020 8996 9419
 020 8996 9420
 020 8996 9421
 020 8996 9422
 020 8996 9423
 020 8996 9424
 020 8996 9425
 020 8996 9426
 020 8996 9427
 020 8996 9428
 020 8996 9429
 020 8996 9430
 020 8996 9431
 020 8996 9432
 020 8996 9433
 020 8996 9434
 020 8996 9435
 020 8996 9436
 020 8996 9437
 020 8996 9438
 020 8996 9439
 020 8996 9440
 020 8996 9441
 020 8996 9442
 020 8996 9443
 020 8996 9444
 020 8996 9445
 020 8996 9446
 020 8996 9447
 020 8996 9448
 020 8996 9449
 020 8996 9450
 020 8996 9451
 020 8996 9452
 020 8996 9453
 020 8996 9454
 020 8996 9455
 020 8996 9456
 020 8996 9457
 020 8996 9458
 020 8996 9459
 020 8996 9460
 020 8996 9461
 020 8996 9462
 020 8996 9463
 020 8996 9464
 020 8996 9465
 020 8996 9466
 020 8996 9467
 020 8996 9468
 020 8996 9469
 020 8996 9470
 020 8996 9471
 020 8996 9472
 020 8996 9473
 020 8996 9474
 020 8996 9475
 020 8996 9476
 020 8996 9477
 020 8996 9478
 020 8996 9479
 020 8996 9480
 020 8996 9481
 020 8996 9482
 020 8996 9483
 020 8996 9484
 020 8996 9485
 020 8996 9486
 020 8996 9487
 020 8996 9488
 020 8996 9489
 020 8996 9490
 020 8996 9491
 020 8996 9492
 020 8996 9493
 020 8996 9494
 020 8996 9495
 020 8996 9496
 020 8996 9497
 020 8996 9498
 020 8996 9499
 020 8996 9500
 020 8996 9501
 020 8996 9502
 020 8996 9503
 020 8996 9504
 020 8996 9505
 020 8996 9506
 020 8996 9507
 020 8996 9508
 020 8996 9509
 020 8996 9510
 020 8996 9511
 020 8996 9512
 020 8996 9513
 020 8996 9514
 020 8996 9515
 020 8996 9516
 020 8996 9517
 020 8996 9518
 020 8996 9519
 020 8996 9520
 020 8996 9521
 020 8996 9522
 020 8996 9523
 020 8996 9524
 020 8996 9525
 020 8996 9526
 020 8996 9527
 020 8996 9528
 020 8996 9529
 020 8996 9530
 020 8996 9531
 020 8996 9532
 020 8996 9533
 020 8996 9534
 020 8996 9535
 020 8996 9536
 020 8996 9537
 020 8996 9538
 020 8996 9539
 020 8996 9540
 020 8996 9541
 020 8996 9542
 020 8996 9543
 020 8996 9544
 020 8996 9545
 020 8996 9546
 020 8996 9547
 020 8996 9548
 020 8996 9549
 020 8996 9550
 020 8996 9551
 020 8996 9552
 020 8996 9553
 020 8996 9554
 020 8996 9555
 020 8996 9556
 020 8996 9557
 020 8996 9558
 020 8996 9559
 020 8996 9560
 020 8996 9561
 020 8996 9562
 020 8996 9563
 020 8996 9564
 020 8996 9565
 020 8996 9566
 020 8996 9567
 020 8996 9568
 020 8996 9569
 020 8996 9570
 020 8996 9571
 020 8996 9572
 020 8996 9573
 020 8996 9574
 020 8996 9575
 020 8996 9576
 020 8996 9577
 020 8996 9578
 020 8996 9579
 020 8996 9580
 020 8996 9581
 020 8996 9582
 020 8996 9583
 020 8996 9584
 020 8996 9585
 020 8996 9586
 020 8996 9587
 020 8996 9588
 020 8996 9589
 020 8996 9590
 020 8996 9591
 020 8996 9592
 020 8996 9593
 020 8996 9594
 020 8996 9595
 020 8996 9596
 020 8996 9597
 020 8996 9598
 020 8996 9599
 020 8996 9600
 020 8996 9601
 020 8996 9602
 020 8996 9603
 020 8996 9604
 020 8996 9605
 020 8996 9606
 020 8996 9607
 020 8996 9608
 020 8996 9609
 020 8996 9610
 020 8996 9611
 020 8996 9612
 020 8996 9613
 020 8996 9614
 020 8996 9615
 020 8996 9616
 020 8996 9617
 020 8996 9618
 020 8996 9619
 020 8996 9620
 020 8996 9621
 020 8996 9622
 020 8996 9623
 020 8996 9624

Cynllun Diwygiedig Amended Plan

DO NOT SCALE FROM THIS DRAWING - WORK TO DIMENSIONS ONLY
THIS DRAWING IS FOR ALL INFORMATION ONLY. ALL OTHER CONSULTANTS (Landscape Architects, Structural Engineers, etc.) MUST CHECK WITH THE ARCHITECT AT ONCE BEFORE PROCEEDING.
ALL DIMENSIONS TO BE CHECKED ON SITE BY CONTRACTOR BEFORE WORK COMMENCES



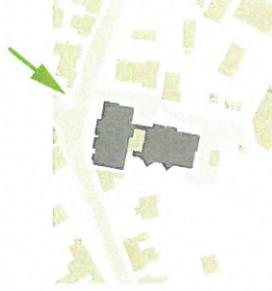
View 1



View 2



View 3



Wf. 000000000
31/10/14 ZH IC
Submitted for Planning Approval
A
Designs created following the management



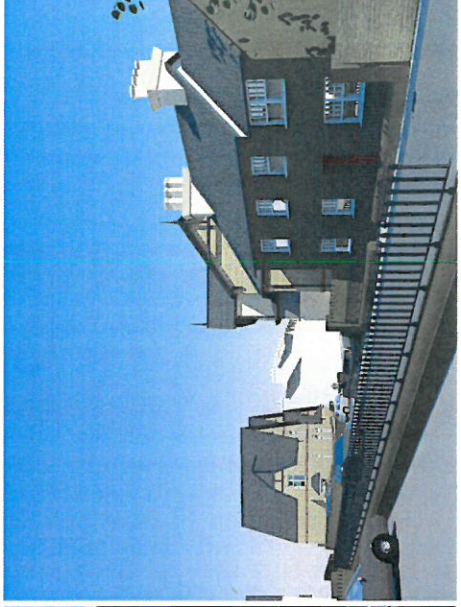
Rebennet Living Housing
Planning
Permitted
3D Views_Sheet 1 of 2
Drawing title: 014152(2009)
PO number: 014152(2009)-1-03
Drawing number: 014152(2009)-1-03
revision: Rev A
Drawing status: Planning
User: MJS@A1
Date: 31/10/14
Drawn by: ZH
Checked by: IC



SEVEN CONSULTANTS
11 Derry Road
LLANDUDNO, GWYNEDD, LL55 2JL
014152(2009)-1-03

DO NOT SCALE FROM THIS DRAWING - WORK TO BE READ IN CONJUNCTION WITH ALL OTHER CONSULTANTS' DRAWINGS TO THE ARCHITECT AT ONCE BEFORE PROCEEDING. ALL DIMENSIONS TO BE CHECKED ON SITE BY CONTRACTOR FOR CONFIRMANCE.

Cynllun Diwygiedig Amended Plan



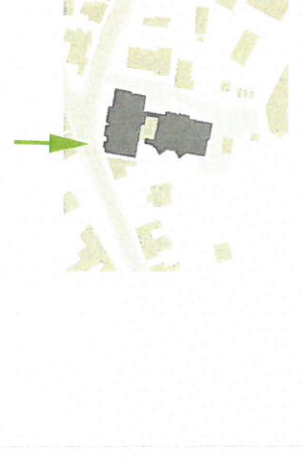
View 6



View 5



View 4



REV. DESCRIPTION 1/10/14 2/11/15 2/11/15
A. Change access to parking to be underground.
B. Change access to parking to be underground.
C. Change access to parking to be underground.

McCarthy & Stone
Liam O'Connell, Director

© McCarthy & Stone Retirement Homes Limited
This drawing is the property of McCarthy & Stone Retirement Homes Limited. It is to be used only for the project and site for which it is prepared. It is not to be used for any other project or site without the written consent of McCarthy & Stone Retirement Homes Limited.

project	Redemptist Living Housing Alla Road Pottitall
drawing file	3D Views_Sheet 2 of 2
plot number	014152(2009)
drawing number	014152(2009)-1-04
revision	Rev A
drawing status	Planning
code	NIS @A1
date	31.10.14
created by	ZH
checked by	IC

seven CONSULTANTS

Seven Architects, 2009
101-103 The Arcade, Manchester, M1 2JQ
Tel: 0161 275 1000
Fax: 0161 275 1001
www.sevenarchitects.co.uk

DO NOT SCALE FROM THIS DRAWING. WORK TO THE DIMENSIONS SHOWN. ALL DIMENSIONS TO BE CHECKED ON SITE BY CONTRACTOR BEFORE COMMENCEMENT OF WORK. TO BE READ IN CONJUNCTION WITH ALL OTHER CONSULTANT DOCUMENTS. ARCHITECT AT ONCE BEFORE PROCEEDING. ALL DIMENSIONS TO BE CHECKED ON SITE BY CONTRACTOR BEFORE COMMENCEMENT OF WORK.

Cynllun Diwygiedig Amended Plan



REV. DESCRIPTION 21/10/14 ZH IC
 A. Submitted for Planning Approval
 B. Approved for Planning Approval
 C. Approved for Planning Approval
 D. Approved for Planning Approval



McCarthy & Stone
 Ltd. Chartered Surveyors
 100, The Quadrant, Exeter, Devon, EX1 1JH
 Tel: 01392 262000 Fax: 01392 262001
 www.mccarthystone.co.uk

Project	Refugees Living Housing Ala Road Pwllheli
Drawing title	Site Plan
Job number	014152(2009)
Drawing number	014152(2009)-1-02
Revision	Rev A
Drawing status	Planning
Scale	1:200 @A1
Date	21/10/14
Drawn by	ZH
Checked by	IC

seven CONSULTANTS
 100, The Quadrant, Exeter, Devon, EX1 1JH
 Tel: 01392 262000 Fax: 01392 262001
 www.sevenconsultants.co.uk

OWNER APPROVED
 DATE: 10/10/2018
 BY: [Signature]
 TITLE: [Title]

Note:
 The original of this drawing was produced in colour - a monochrome copy should not be relied upon.
 This survey based on CPFLS drawing number 150414C2-01.
 Proposed Site Plan based on Sereco Architecture drawing number 014152(2009)-1-SE018 Rev H.



GWYBODAETH YCHWANEGOL
 ADDITIONAL INFORMATION
 Drawing Reference: 51115
 Unapproved Signature: [Signature]

SCHEDULE OF TREES AT ALMA ROAD, PLYMOUTH

Tree No	Species	DBH (cm)	Height (m)	Form	Health	Tree Dimensions (m)		Location	Notes
						Spread	Clearance		
1
2
3
4
5
6
7
8
9
10
11
12
13

Key:

- Existing site features
- Proposed structures
- Trees retained
- Trees removed
- 2.0m high barrier as detail in Fig. 3
- Minimum extent of on-site construction
- Annual employment crop for grasses
- Root Protection Area (RPA)

Site to Schedule of Trees

1. Tree to be retained
 2. Tree to be removed
 3. Tree to be retained
 4. Tree to be removed
 5. Tree to be retained
 6. Tree to be removed
 7. Tree to be retained
 8. Tree to be removed
 9. Tree to be retained
 10. Tree to be removed
 11. Tree to be retained
 12. Tree to be removed
 13. Tree to be retained

McCarthy & Stone

PROJECT: Air Corridor
 Purfleet

TITLE: Tree Protection Plan
 DRAWING NUMBER: 8586/02

DATE: Jan 2015
 SCALE: 1:200 @ A1
 DRAWN BY: JAL
 CHECKED BY: JJK

Prepared for: The Client
 The Client: [Name]
 The Project: [Name]
 The Site: [Name]
 The Drawing: [Name]

IAN KIRBY LIMITED
 Environmental & Planning Consultants
 100, High Street, London, E15 2JF, UK
 Tel: 020 7478 1000
 Fax: 020 7478 1001
 Email: info@iankirby.co.uk
 Website: www.iankirby.co.uk

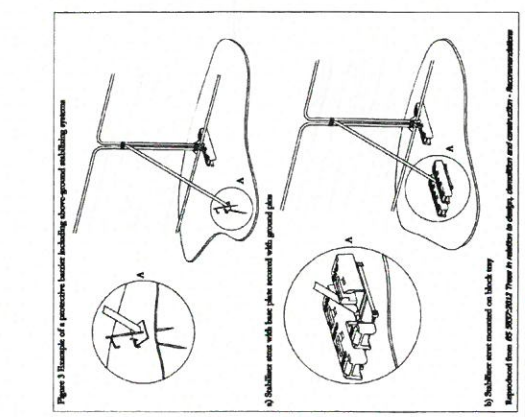
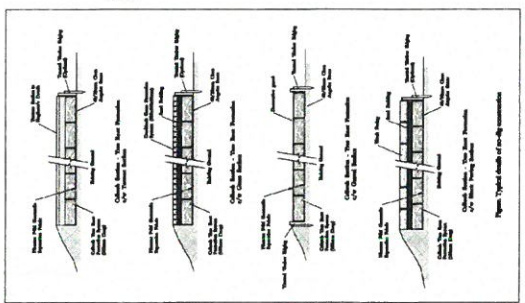


Figure 3 Example of a protective barrier including above-ground retaining system
 a) Barrier with base plate secured with ground pins
 b) Barrier with concrete slab secured with ground pins
 Reproduced from BS 8536:2012 Part 4: Trees to be retained in design, durability and construction - Recommendations



Item No	Code	Part Name	Height/Spread/Grade	Orth	App	Root	Cont	Habit	Form	Dim/Int/2
Benches										
4	ESM	Figura side	40x50cm							5.00
Herbaceous										
42	ABE	Azalea ericoides 'Strawberry Beauty'	15-10cm	C					Form	5.00
10	ACS	Azalea 'Lambton'	15-10cm	C					Form	5.00
38	APF	Alum. albertana	15-10cm	C					Form	5.00
27	Am	Alchemilla mollis	15-20cm	C					Form	5.00
9	CTH	Carex montana 'Evelyn'	15-10cm	C					Form	5.00
73	GBR	Geranium Johnson Blue'	20-30cm	C					Form	5.00
149	LV	Leucostemum vulgare	15-10cm	C					Form	5.00
21	SL	Saxifraga cernuhybrida	20-30cm	C					Form	5.00
47	ESF	Silene officinalis 'Purpurea'	20-30cm	C					Form	5.00

Item No	Code	Part Name	Height/Spread/Grade	Orth	App	Root	Cont	Habit	Form	Dim/Int/2
Shrub										
1	APA	Acer palmatum 'Atropurpureum'	80-100cm	C					Form	5.00
47	BA	Buxus sempervirens	40x50cm	C					Form	5.00
6	CA	Camellia sasanqua 'Sundance'	80-100cm	B	19-12				Form	5.00
108	CCB	Chamaecyparis 'Coral Beauty'	40x50cm	C					Form	5.00
10	CTS	Choisyana 'Sundance'	40x50cm	C					Form	5.00
188	EFG	Eurythoe 'Evelyn'	20-30cm (D)	C					Form	5.00
69	HCG	Hedera 'Bronze Leaf'	40x50cm	C					Form	5.00
16	HDM	Hedera 'Climax de Marne'	40x50cm	C					Form	5.00
151	HRE	Hedera 'Hibernica'	20-30cm	C					Form	5.00
117	HMO	Hedera 'White Gem'	20-30cm	C					Form	5.00
192	Hm	Hydrangea 'Nadeshiko'	30x40cm	C					Form	5.00
49	HYH	Hydrangea 'Hortensia'	20x30	C					Form	5.00
49	LAT	Larix laricina 'Forest Floor'	40x50cm	C					Form	5.00
6	PFY	Phormium 'Maid of Honor'	60x80cm	B	19-12				Form	5.00
13	PMS	Phormium 'Maid of Honor'	125x150	C					Form	5.00
30	PRC	Podocarpus 'Narrow Leaf Robin'	40x50cm	C					Form	5.00
42	PSR	Prunella 'Spiral Red'	60x80	C					Form	5.00
9	PRR	Prunella 'Yellow Red'	70x80	C					Form	5.00
6	PVY	Prunella 'Yellow Yellow'	70x80cm	C					Form	5.00
53	SGF	Spiraea 'Mophead'	30x40cm	C					Form	5.00
2	SHH	Salix 'Harpur's Weir'	100-120cm	C					Form	5.00
32	SRM	Spiraea 'Mophead'	30x40	C					Form	5.00
86	SSM	Spiraea 'Mophead'	40x50cm	C					Form	5.00
33	VNE	Viburnum 'Eldorado'	60x80	C					Form	5.00

Item No	Code	Part Name	Height/Spread/Grade	Orth	App	Root	Cont	Habit	Form	Dim/Int/2
Tree										
7	AC	Alder tree	300-500cm	15-20cm	2x	B			Selected Standard	5.00
9	FAH	Fraxinus saxonica 'Aurea'	300-500cm	15-20cm	2x	B			Selected Standard	5.00
1	BA	Betula pubescens 'Erdos'	300-420cm	13-16cm	3x	B			Standard (Heavy)	5.00
4	SOH	Salix 'Harpur's Weir'	300-420cm	13-16cm	3x	B			Standard (Heavy)	5.00

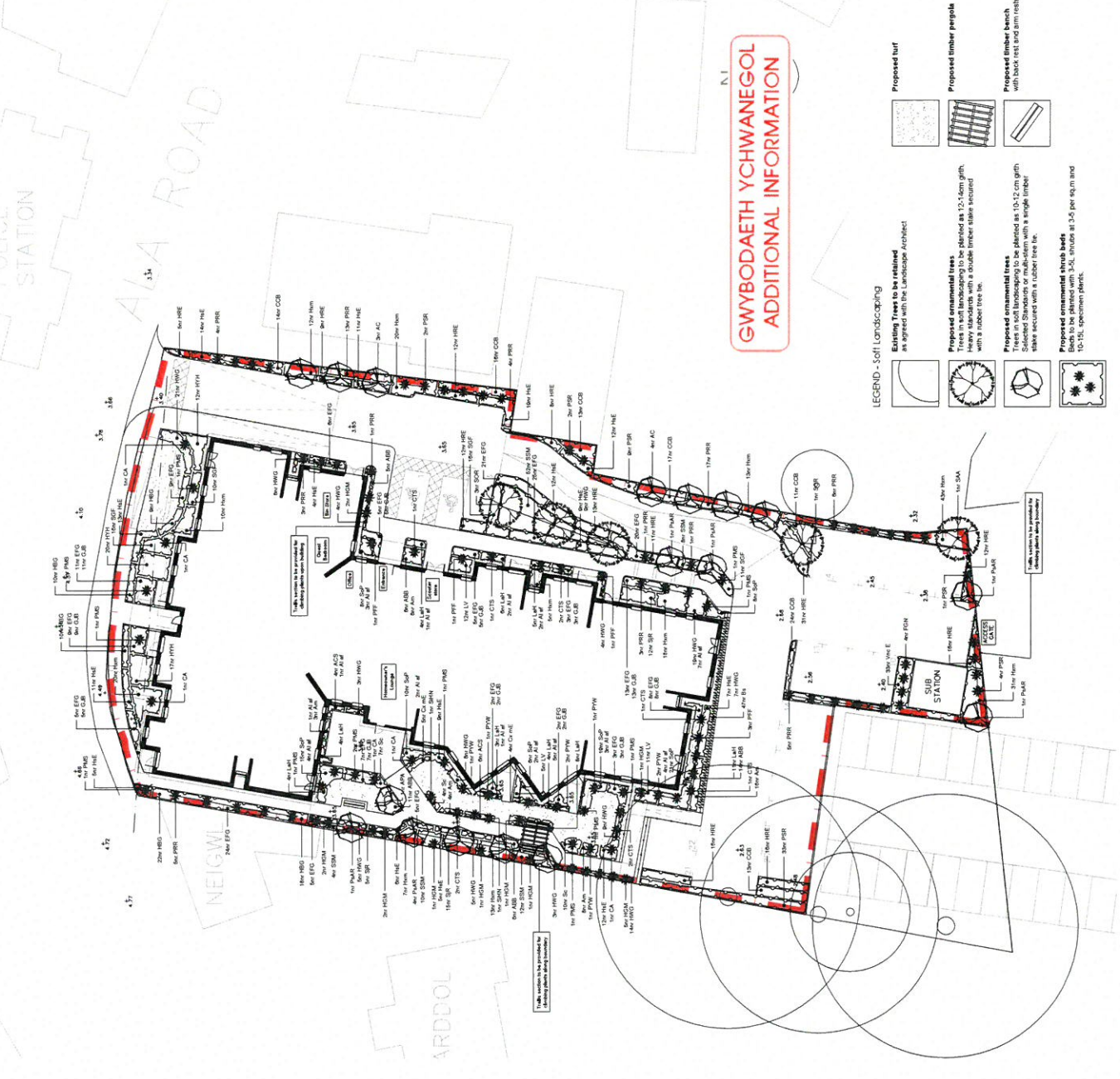
NOTE: See Appendix 1 for a full list of plants and their details. All plants are to be supplied in 100% nursery stock. All plants are to be supplied in 100% nursery stock. All plants are to be supplied in 100% nursery stock.

PLANTING SCHEDULE: All plants are to be planted in accordance with the following schedule. All plants are to be planted in accordance with the following schedule. All plants are to be planted in accordance with the following schedule.

SHACKLETON ASSOCIATES
 tpm landscape
 chartered landscape architects
 100-1100 10th Avenue SW, Suite 100, Vancouver, BC V6H 1A6
 Tel: 604-276-1100 Fax: 604-276-1101
 www.shackletonassociates.com

McCCarthy & Stone
 Retirement Living Housing
 Ala Road, Pwllheli
 Pwllheli, Gwynedd, LL57 2JL
 Tel: 01248 361111 Fax: 01248 361112
 www.mccarthystone.co.uk

For Approval
 Date: 1-200 KD DC NOV 14
 Scale: 1:200
 Drawing No: 2101_02
 Copyright: © PM Landscape Ltd



GWYBODAETH YCHWANE GOL
ADDITIONAL INFORMATION

LEGEND - Soft Landscaping

- Existing Trees to be retained:** As agreed with the Landscape Architect.
- Proposed ornamental trees:** Trees in soft landscaping to be planted as 10-12cm girth. Selected standards or multi-stems with a single leader. To be planted with a double liner stable secured with a robust iron tie.
- Proposed ornamental shrubs:** Shrub in soft landscaping to be planted as 10-12cm girth. To be planted with 2.5m leads at 2.5m sq m and 10-15, specimen plant.

Proposed turf: [Symbol]

Proposed timber pergola: [Symbol]

Proposed timber bench: with back rest and arm rests [Symbol]

DO NOT SCALE FROM THIS DRAWING. WORK TO FIGURED DIMENSIONS ONLY.
 THIS DRAWING IS FOR INFORMATION ONLY. ALL DIMENSIONS AND FINISHES TO BE CHECKED ON SITE BY CONTRACTOR BEFORE WORK COMMENCES.

MATERIALS KEY:

Walls:

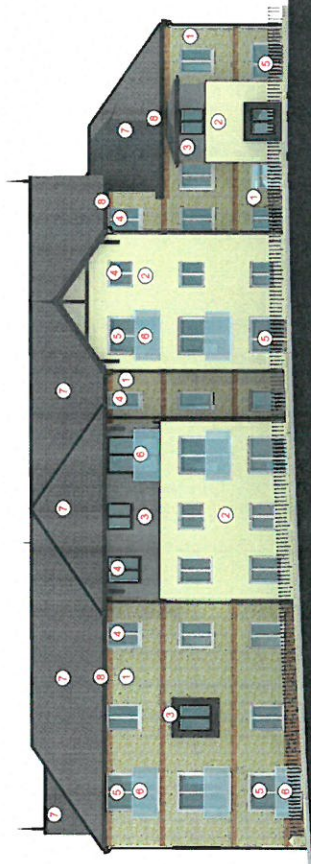
- ① Facing brickwork : Buff brick with feature red brick banding to match neighbouring properties
- ② Render : K-Rend through coloured render. Colour : Polar white
- ③ Zinc cladding
- ④ Windows : White uPVC generally, grey where within zinc.
- ⑤ Doors : Painted timber / grey uPVC
- ⑥ Glass / metal balustrading

Roofs:

- ⑦ Sandtoft slate grey tiles with matching angular ridge tiles
- ⑧ Grey grained uPVC fascias/bargeboards, black uPVC rainwater goods.

Boundaries:

See landscaping plans.



Existing site levels

31/10/14 2H JC
 Submitted for Planning Approval

THE PLANNING INSTITUTE LIMITED
 Chartered Institute of Planning

G. L. Day B.Sc., B.Arch., R.I.B.A.
 Design Director
 York
 Tel: 01904 328822 Tel: 019 927 7801

McCarthy & Stone
 Land Use, Order Life

McCarthy & Stone Retirement Liveways Limited
 A limited liability company registered in England and Wales, number 07122416. Registered office: 1st Floor, 100, The Square, Colchester, Essex, CO1 1JG.

project:	Retirement Living Housing New Pathway
drawing title:	Sheet 1 of 2
job number:	014152(2009)
drawing number:	014152(2009)-1-07
revision:	Rev -
drawing status:	Planning
scale:	1:100 @A1
date:	31.10.14
drawn by:	ZH
checked by:	JC

seven planning

11 Church Street, Manchester, M4 1JG
 0161 275 6600
 www.sevenplanning.co.uk

DO NOT SCALE FROM THIS DRAWING. WORK TO FIGURED DIMENSIONS ONLY. THIS DRAWING IS THE PROPERTY OF THE ARCHITECT AND IS NOT TO BE REPRODUCED OR TRANSMITTED IN ANY FORM OR BY ANY MEANS, ELECTRONIC OR MECHANICAL, WITHOUT THE WRITTEN PERMISSION OF THE ARCHITECT. ALL DIMENSIONS TO BE CHECKED ON SITE BY CONTRACTOR BEFORE WORK COMMENCES.

MATERIALS KEY:

Walls:

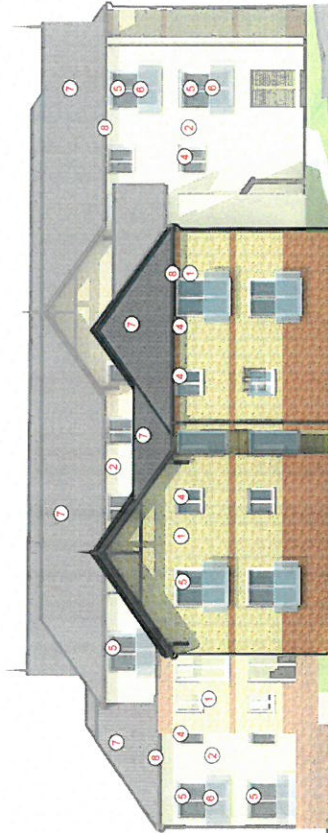
- ① Facing brickwork : Buff brick with feature red brick banding to match neighbouring properties
- ② Render : K-Rend through coloured render. Colour : Polar white
- ③ Zinc cladding
- ④ Windows : White uPVC generally, grey where within zinc.
- ⑤ Doors : Painted timber / grey uPVC
- ⑥ Glass / metal balustrading

Roofs:

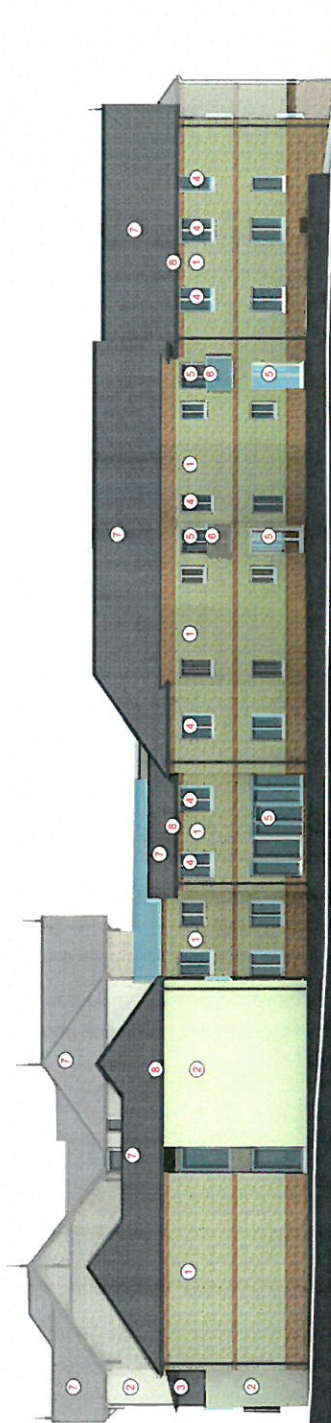
- ⑦ Sandtoft slate grey tiles with matching angular ridge tiles
- ⑧ Grey grained uPVC fascias/bargeboards, black uPVC rainwater goods.

Boundaries:

See landscaping plans.



Proposed North Elevation



Proposed East Elevation



Existing site levels

31/03/14 ZH IC
Schemes for Planning Approval

THE PLANNING RESEARCHERS
 Peter Dwyer - Director
 G.L. Dwyer & S. B. Arch. R.I.B.A.
 York Design Director
 York
 Tel: 01904 528822 Fax: 01904 827 7001

McCarthy & Stone
 Limerick Urban Centre Ltd

© McCarthy & Stone Refurbishment Works Ltd
 All rights reserved. This is a reproduction of an architectural drawing. It is not to be used for any other purpose without the written permission of McCarthy & Stone Refurbishment Works Ltd.

project	Refurbishment Living Housing Aile Road Puffinball
drawing no.	Sheet 2 of 2
job number	014152(2009)
drawing number	014152(2009)-1-08
revision	Rev -
drawing status	Planning
scale	1:100 @A1
date	31.10.14
drawn by	ZH
checked by	IC

seven ARCHITECTS

7-11 CITY SQUARE, WATERLOO PLACE, LONDON, W1P 7LN
 020 7333 3333
 www.sevenarchitects.co.uk

Chris & Zoe McCreesh Architects
 11-13 THE SQUARE, WATERLOO PLACE, LONDON, W1P 7LN
 020 7333 3333
 www.sevenarchitects.co.uk

