



NOTES:

1. Do not scale from this drawing.
2. Always work to noted dimensions.
3. All dimensions are in millimetres unless otherwise stated.
4. All setting out, levels and dimensions to be agreed on site.
5. The dimensions of all materials must be checked on site before being laid out.
6. This drawing must be read with the relevant specification clauses and detail drawings.
7. Order of construction and setting out to be agreed on site.

KEY

Application Boundary

P01	29/11/24	Stage 3 Issue	KR	TI
Revision	Date	Description	Drawn	Apprvd.

THIS DRAWING IS COPYRIGHT PROTECTED AND MAY NOT BE REPRODUCED IN WHOLE OR PART WITHOUT WRITTEN AUTHORITY FROM THE OWNER.

Client **Gwynedd Council**

Project **Bontnewydd Community Campus**

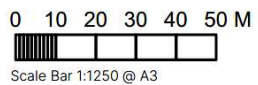
Drg Title **Site Location Plan**

Created on **16/09/24** Created by **KR** Approved by **TI**

Scale **1:1250** Size **A3** Workstage **Stage 3**

Drg No. **BON-LST-XX-XX-DR-L-0010** Suitability **S4** Revision **P01**

land | studio





- NOTES
1. Do not scale from this drawing.
 2. Always work to noted dimensions.
 3. All dimensions are in millimetres unless otherwise stated.
 4. All setting out, levels and dimensions to be agreed on site.
 5. The dimensions of all materials must be checked on site before being laid out.
 6. This drawing must be read with the relevant specification clauses and detail drawings.
 7. Order of construction and setting out to be agreed on site.

KEY

[Symbol]	Existing Boundary and Street Footpath
[Symbol]	Existing Green Wall
[Symbol]	Existing Hedge
[Symbol]	Existing 1.2m Chalkline
[Symbol]	Existing Chalkline at Wall
[Symbol]	Existing 7.6m Footpath
[Symbol]	Existing 2.4m Gate

**Cynllun Diwygiedig
Amended Plan**

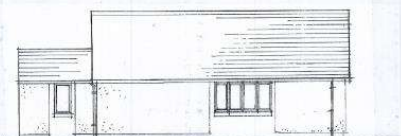
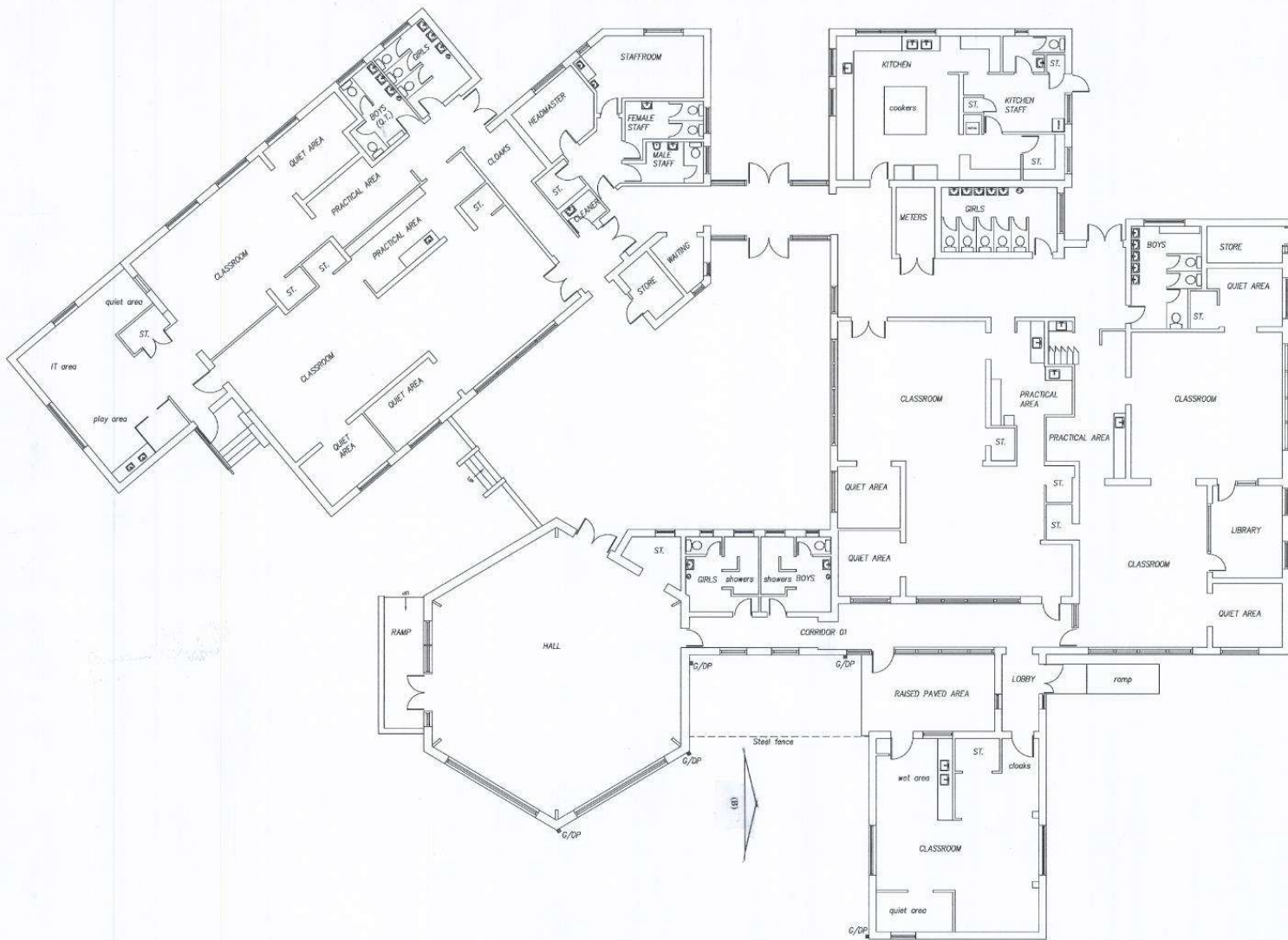
DERBYN
Adran Cynllunio - 21.01.2026

PO2	220105	Updated Plan	MN	RK
PO1	201104	Stage 3 Issue	MN	RK

THIS DRAWING IS COPYRIGHT PROTECTED AND MAY NOT BE REPRODUCED IN WHOLE OR PART WITHOUT WRITTEN AUTHORITY FROM THE OWNER.

Client	Gwynedd Council			
Project	Bontnewydd Community Campus			
Dwg Title	Existing Layout			
Created on	Created by	Approved by		
01/03/24	MN	MN		
Scale	Size	Workstage		
1:200	A1	Stage 4		
Dwg No.	Subsidiary	Revision		
BON-LST-XX-XX-DR-L-0011	S3	PO2		

land studio



EDRYCHAD DDWYREINIOL (B)
EAST ELEVATION (B)



EDRYCHAD DDE (A)
SOUTH ELEVATION (A)

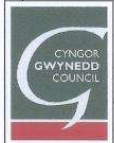
CLIENT/CLIENT:

NODIADAU/NOTES

GWYBODAETH YCHWANEGOL
ADDITIONAL INFORMATION

28-04-26
Cynllunio - Cyngor Gwynedd

REV	NO.	REVISIONAL MODURIFICATION	DATE



CYFADRAN YR
AMGYLCHEDD
ENVIRONMENT
DIRECTORATE

Cyfarwyddwr Strategol Amgylchedd/
Strategic Director of Environment
Drew V Rowlands
B.Sc. M.Sc. D.H.S. C.Eng F.I.C.E. M.I.H.T.

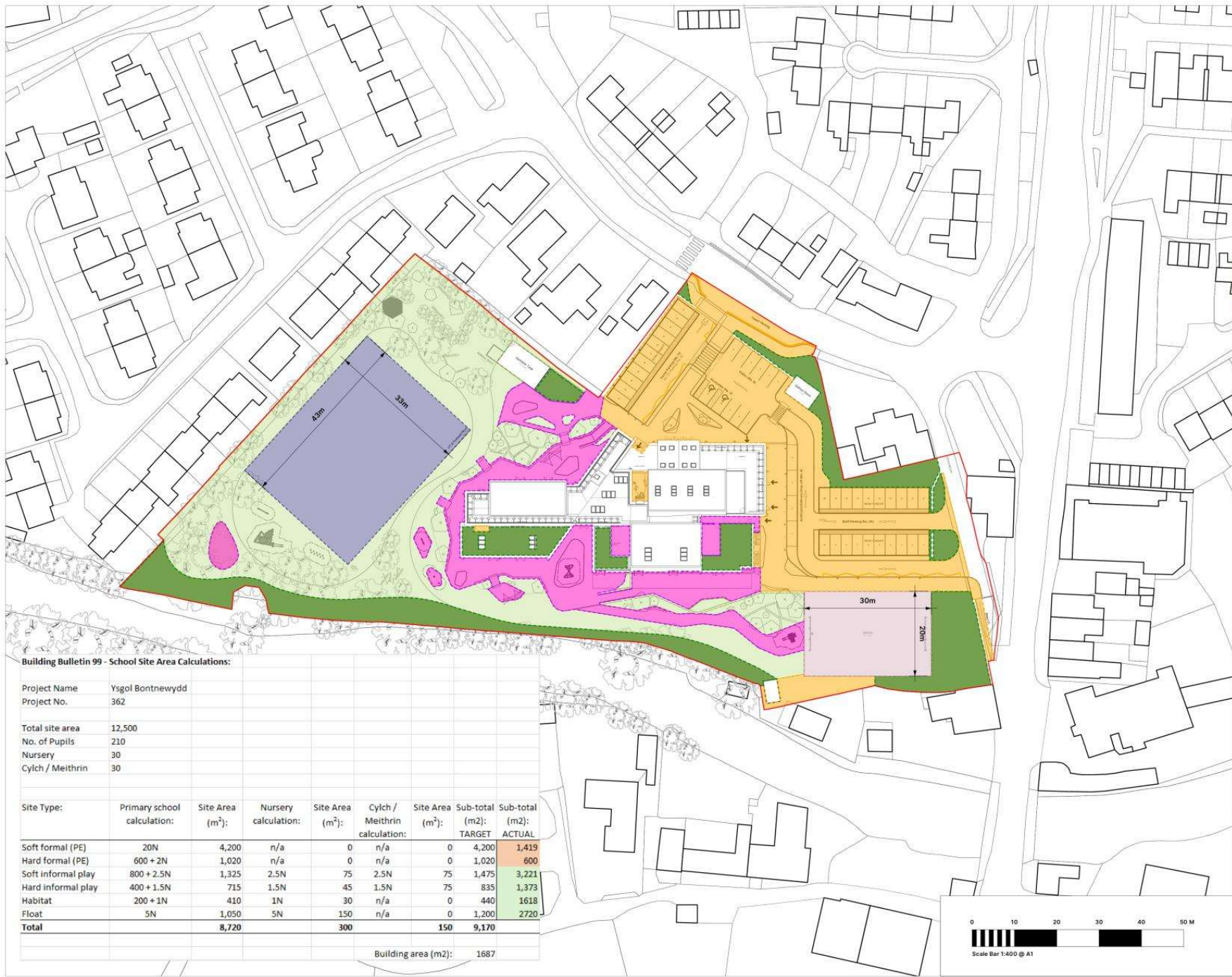
YMGYNGHORIAETH GWYNEDD
GWYNEDD CONSULTANCY

CYNLLUN / SCHEME:
YSGOL GYNRADD BONTNEWYDD
YSTAFELL ANABL NEWYDD

TITL LUNNIAID / DRAWING TITLE:
CYNLLUN A DRYCHIADAU PRESENNOL
EXISTING PLAN AND ELEVATIONS

DARLUNWYD GAN: DRAWN BY:	GCD	DYDDIADAU DARLUNWYD: DATE DRAWN:	EBRILL 08
GWYBODAETH GAN: CHECKED BY:		DYDDIADAU GWYBODAETH: DATE CHECKED:	
Tafod Sheet	1 of 1	GRADDYFIEDD: SCALES:	1:100

Rhif Lunniad
Drawing No. **CPF2045 01**



- NOTES:**
1. Do not scale from this drawing.
 2. Always work to noted dimensions.
 3. All dimensions are in millimetres unless otherwise stated.
 4. All setting out, levels and dimensions to be agreed on site.
 5. The dimensions of all materials must be checked on site before being laid out.
 6. This drawing must be read with the relevant specification clauses and detail drawings.
 7. Order of construction and setting out to be agreed on site.

- PROVISION KEY**
- Soft Formal Play (PE)
 - Hard Formal Play (Maga)
 - Soft Informal Play
 - Hard Informal
 - Habitat
 - Foot

DERBYN
Adran Cynllunio 02-12-2024

DIM I RADDFA
NOT TO SCALE

Building Bulletin 99 - School Site Area Calculations:

Project Name	Ysgol Bontnewydd
Project No.	362
Total site area	12,500
No. of Pupils	210
Nursery	30
Cylch / Meithrin	30

Site Type:	Primary school calculation:	Site Area (m ²):	Nursery calculation:	Site Area (m ²):	Cylch / Meithrin calculation:	Site Area (m ²):	Sub-total	
							TARGET	ACTUAL
Soft formal (PE)	20N	4,200	n/a	0	n/a	0	4,200	1,419
Hard formal (PE)	600 + 2N	1,020	n/a	0	n/a	0	1,020	600
Soft informal play	800 + 2.5N	1,325	2.5N	75	2.5N	75	1,475	3,221
Hard informal play	400 + 1.5N	715	1.5N	45	1.5N	75	835	1,373
Habitat	200 + 1N	410	1N	30	n/a	0	440	1618
Foot	5N	1,050	5N	150	n/a	0	1,200	2,720
Total		8,720		300		150	9,170	

Building area (m2): 1687

Revision	Date	Description	Drawn/Approved
P03	29/11/24	Stage 3 Update	HN KR
P02	31/08/24	PAC Issue	SN CF
P01	12/03/24	Stage 2 Issue	SN KOC

THIS DRAWING IS COPYRIGHT PROTECTED AND MAY NOT BE REPRODUCED IN WHOLE OR PART WITHOUT WRITTEN AUTHORITY FROM THE OWNER.

Client: Gwynedd Council

Project: Bontnewydd Community Campus

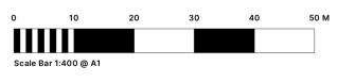
Draw Title: Landscape Provision Area Calculations

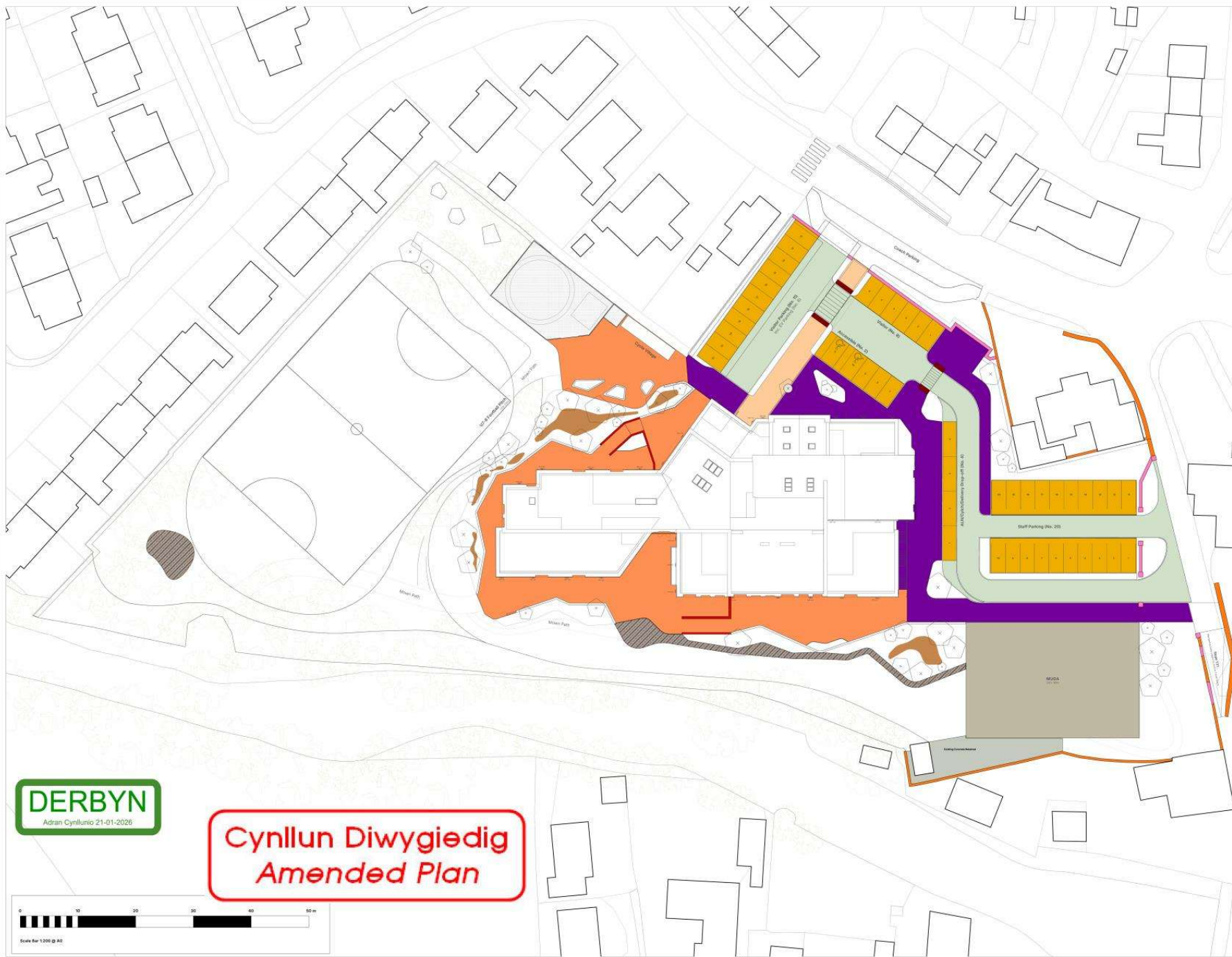
Created on: 24/01/24
Created by: MN
Approved by: KR

Scale: 1:400
Site: A1
Workstage: Stage 3

Draw No.: BON-LST-XX-XX-DR-L-0701
Subsidiary: S4
Revision: P03

land studio





- NOTES**
1. Do not scale from this drawing.
 2. Do not scale to match dimensions.
 3. All dimensions are in millimetres unless otherwise stated.
 4. The drawings shall be prepared in accordance with the British Standard BS 1192:2011.
 5. The drawings shall be prepared in accordance with the British Standard BS 1192:2011.
 6. The drawings shall be prepared in accordance with the British Standard BS 1192:2011.
 7. The drawings shall be prepared in accordance with the British Standard BS 1192:2011.
- KEY**
- PA1 Paved Area (Concrete)
 - PA2 Paved Area (Asphalt)
 - PA3 Paved Area (Gravel)
 - PA4 Paved Area (Grass)
 - PA5 Paved Area (Gravel)
 - PA6 Paved Area (Grass)
 - PA7 Paved Area (Grass)
 - PA8 Paved Area (Grass)
 - PA9 Paved Area (Grass)
 - PA10 Paved Area (Grass)
 - PA11 Paved Area (Grass)
 - PA12 Paved Area (Grass)
 - PA13 Paved Area (Grass)
 - PA14 Paved Area (Grass)
 - PA15 Paved Area (Grass)
 - PA16 Paved Area (Grass)
 - PA17 Paved Area (Grass)
 - PA18 Paved Area (Grass)
 - PA19 Paved Area (Grass)
 - PA20 Paved Area (Grass)
 - PA21 Paved Area (Grass)
 - PA22 Paved Area (Grass)
 - PA23 Paved Area (Grass)
 - PA24 Paved Area (Grass)
 - PA25 Paved Area (Grass)
 - PA26 Paved Area (Grass)
 - PA27 Paved Area (Grass)
 - PA28 Paved Area (Grass)
 - PA29 Paved Area (Grass)
 - PA30 Paved Area (Grass)
 - PA31 Paved Area (Grass)
 - PA32 Paved Area (Grass)
 - PA33 Paved Area (Grass)
 - PA34 Paved Area (Grass)
 - PA35 Paved Area (Grass)
 - PA36 Paved Area (Grass)
 - PA37 Paved Area (Grass)
 - PA38 Paved Area (Grass)
 - PA39 Paved Area (Grass)
 - PA40 Paved Area (Grass)
 - PA41 Paved Area (Grass)
 - PA42 Paved Area (Grass)
 - PA43 Paved Area (Grass)
 - PA44 Paved Area (Grass)
 - PA45 Paved Area (Grass)
 - PA46 Paved Area (Grass)
 - PA47 Paved Area (Grass)
 - PA48 Paved Area (Grass)
 - PA49 Paved Area (Grass)
 - PA50 Paved Area (Grass)
 - PA51 Paved Area (Grass)
 - PA52 Paved Area (Grass)
 - PA53 Paved Area (Grass)
 - PA54 Paved Area (Grass)
 - PA55 Paved Area (Grass)
 - PA56 Paved Area (Grass)
 - PA57 Paved Area (Grass)
 - PA58 Paved Area (Grass)
 - PA59 Paved Area (Grass)
 - PA60 Paved Area (Grass)
 - PA61 Paved Area (Grass)
 - PA62 Paved Area (Grass)
 - PA63 Paved Area (Grass)
 - PA64 Paved Area (Grass)
 - PA65 Paved Area (Grass)
 - PA66 Paved Area (Grass)
 - PA67 Paved Area (Grass)
 - PA68 Paved Area (Grass)
 - PA69 Paved Area (Grass)
 - PA70 Paved Area (Grass)
 - PA71 Paved Area (Grass)
 - PA72 Paved Area (Grass)
 - PA73 Paved Area (Grass)
 - PA74 Paved Area (Grass)
 - PA75 Paved Area (Grass)
 - PA76 Paved Area (Grass)
 - PA77 Paved Area (Grass)
 - PA78 Paved Area (Grass)
 - PA79 Paved Area (Grass)
 - PA80 Paved Area (Grass)
 - PA81 Paved Area (Grass)
 - PA82 Paved Area (Grass)
 - PA83 Paved Area (Grass)
 - PA84 Paved Area (Grass)
 - PA85 Paved Area (Grass)
 - PA86 Paved Area (Grass)
 - PA87 Paved Area (Grass)
 - PA88 Paved Area (Grass)
 - PA89 Paved Area (Grass)
 - PA90 Paved Area (Grass)
 - PA91 Paved Area (Grass)
 - PA92 Paved Area (Grass)
 - PA93 Paved Area (Grass)
 - PA94 Paved Area (Grass)
 - PA95 Paved Area (Grass)
 - PA96 Paved Area (Grass)
 - PA97 Paved Area (Grass)
 - PA98 Paved Area (Grass)
 - PA99 Paved Area (Grass)
 - PA100 Paved Area (Grass)

DERBYN
Adran Cynllunio 21-01-2026

**Cynllun Diwygiedig
Amended Plan**



Revised	Date	Description	Drawn/Approved
PA1	20/01/24	Initial Issue	PA
PA2	02/02/24	Stage 1 Issue	PA
PA3	02/02/24	Stage 1 Issue	PA
PA4	02/02/24	Stage 1 Issue	PA
PA5	02/02/24	Stage 1 Issue	PA
PA6	02/02/24	Stage 1 Issue	PA
PA7	02/02/24	Stage 1 Issue	PA
PA8	02/02/24	Stage 1 Issue	PA
PA9	02/02/24	Stage 1 Issue	PA
PA10	02/02/24	Stage 1 Issue	PA
PA11	02/02/24	Stage 1 Issue	PA
PA12	02/02/24	Stage 1 Issue	PA
PA13	02/02/24	Stage 1 Issue	PA
PA14	02/02/24	Stage 1 Issue	PA
PA15	02/02/24	Stage 1 Issue	PA
PA16	02/02/24	Stage 1 Issue	PA
PA17	02/02/24	Stage 1 Issue	PA
PA18	02/02/24	Stage 1 Issue	PA
PA19	02/02/24	Stage 1 Issue	PA
PA20	02/02/24	Stage 1 Issue	PA
PA21	02/02/24	Stage 1 Issue	PA
PA22	02/02/24	Stage 1 Issue	PA
PA23	02/02/24	Stage 1 Issue	PA
PA24	02/02/24	Stage 1 Issue	PA
PA25	02/02/24	Stage 1 Issue	PA
PA26	02/02/24	Stage 1 Issue	PA
PA27	02/02/24	Stage 1 Issue	PA
PA28	02/02/24	Stage 1 Issue	PA
PA29	02/02/24	Stage 1 Issue	PA
PA30	02/02/24	Stage 1 Issue	PA
PA31	02/02/24	Stage 1 Issue	PA
PA32	02/02/24	Stage 1 Issue	PA
PA33	02/02/24	Stage 1 Issue	PA
PA34	02/02/24	Stage 1 Issue	PA
PA35	02/02/24	Stage 1 Issue	PA
PA36	02/02/24	Stage 1 Issue	PA
PA37	02/02/24	Stage 1 Issue	PA
PA38	02/02/24	Stage 1 Issue	PA
PA39	02/02/24	Stage 1 Issue	PA
PA40	02/02/24	Stage 1 Issue	PA
PA41	02/02/24	Stage 1 Issue	PA
PA42	02/02/24	Stage 1 Issue	PA
PA43	02/02/24	Stage 1 Issue	PA
PA44	02/02/24	Stage 1 Issue	PA
PA45	02/02/24	Stage 1 Issue	PA
PA46	02/02/24	Stage 1 Issue	PA
PA47	02/02/24	Stage 1 Issue	PA
PA48	02/02/24	Stage 1 Issue	PA
PA49	02/02/24	Stage 1 Issue	PA
PA50	02/02/24	Stage 1 Issue	PA
PA51	02/02/24	Stage 1 Issue	PA
PA52	02/02/24	Stage 1 Issue	PA
PA53	02/02/24	Stage 1 Issue	PA
PA54	02/02/24	Stage 1 Issue	PA
PA55	02/02/24	Stage 1 Issue	PA
PA56	02/02/24	Stage 1 Issue	PA
PA57	02/02/24	Stage 1 Issue	PA
PA58	02/02/24	Stage 1 Issue	PA
PA59	02/02/24	Stage 1 Issue	PA
PA60	02/02/24	Stage 1 Issue	PA
PA61	02/02/24	Stage 1 Issue	PA
PA62	02/02/24	Stage 1 Issue	PA
PA63	02/02/24	Stage 1 Issue	PA
PA64	02/02/24	Stage 1 Issue	PA
PA65	02/02/24	Stage 1 Issue	PA
PA66	02/02/24	Stage 1 Issue	PA
PA67	02/02/24	Stage 1 Issue	PA
PA68	02/02/24	Stage 1 Issue	PA
PA69	02/02/24	Stage 1 Issue	PA
PA70	02/02/24	Stage 1 Issue	PA
PA71	02/02/24	Stage 1 Issue	PA
PA72	02/02/24	Stage 1 Issue	PA
PA73	02/02/24	Stage 1 Issue	PA
PA74	02/02/24	Stage 1 Issue	PA
PA75	02/02/24	Stage 1 Issue	PA
PA76	02/02/24	Stage 1 Issue	PA
PA77	02/02/24	Stage 1 Issue	PA
PA78	02/02/24	Stage 1 Issue	PA
PA79	02/02/24	Stage 1 Issue	PA
PA80	02/02/24	Stage 1 Issue	PA
PA81	02/02/24	Stage 1 Issue	PA
PA82	02/02/24	Stage 1 Issue	PA
PA83	02/02/24	Stage 1 Issue	PA
PA84	02/02/24	Stage 1 Issue	PA
PA85	02/02/24	Stage 1 Issue	PA
PA86	02/02/24	Stage 1 Issue	PA
PA87	02/02/24	Stage 1 Issue	PA
PA88	02/02/24	Stage 1 Issue	PA
PA89	02/02/24	Stage 1 Issue	PA
PA90	02/02/24	Stage 1 Issue	PA
PA91	02/02/24	Stage 1 Issue	PA
PA92	02/02/24	Stage 1 Issue	PA
PA93	02/02/24	Stage 1 Issue	PA
PA94	02/02/24	Stage 1 Issue	PA
PA95	02/02/24	Stage 1 Issue	PA
PA96	02/02/24	Stage 1 Issue	PA
PA97	02/02/24	Stage 1 Issue	PA
PA98	02/02/24	Stage 1 Issue	PA
PA99	02/02/24	Stage 1 Issue	PA
PA100	02/02/24	Stage 1 Issue	PA

Client: **Gwynedd Council**

Project: **Bwthynydd Community Campus**

Project No: **Hardworks Arrangement**

Created on: **02/01/24** | Drawn by: **KR**

Scale: **1:200** | Stage: **Stage 6**

Project No: **BONLIST-XX-09-L-0401** | Job No: **03** | Revision: **POS**

land studio



- NOTES:
1. Do not scale from this drawing.
 2. Always work to stated dimensions.
 3. All dimensions are in millimetres unless otherwise stated.
 4. All setting out, levels and dimensions to be agreed on site.
 5. The dimensions of all materials must be checked on site before being laid out.
 6. This drawing must be read with the relevant specification clauses and detail drawings.
 7. Order of construction and setting out to be agreed on site.

- Willflower Grass Mix (01)
- Amenity Pitch Grass (02)
- Enhanced Meadow Mix
- Sedge Mix (Planting)
- Rain Garden Mix (Planting)
- Biodiverse Green Roof
- Riparian Buffer Mix (Over Exposed)
- Productive Planting Beds
- Spring Sub-mix (Planting)
- Woodland copse mix (Planting)



Plant Name	Specification	% mix	Area/m ²	density per m ²	Total Plants
Rain Garden Mix					
<i>Alchemilla octopetala</i> 'Dramatic'	Round-headed Garlic	10	14	4	57
<i>Androsace</i> 'Golden Bell'	Golden Bell	10	14	3	29
<i>Mitella senecioides</i> 'Slate Dabbler'	Rainier Blue grass, 3rd year	10	14	1	29
<i>Salix</i> 'Saxifraga'	Salix	10	14	4	17
<i>Urtica dioica</i>	Stinging Nettle	10	14	3	29
<i>Thymus praecox</i> 'Herbacea'	Common Thyme	10	14	1	29
<i>Hypericum perforatum</i> 'St. John's Wort'	St. John's Wort	10	14	1	29
<i>Salix repens</i>	Salix	10	14	1	29
<i>Urtica dioica</i>	Stinging Nettle	10	14	1	29
Total (m²)			140	8	313

Plant Name	Specification	% mix	Area/m ²	density per m ²	Total Plants
Woodland Copse Mix					
<i>Urtica dioica</i>	Stinging Nettle	10	14	1	29
<i>Androsace</i> 'Golden Bell'	Golden Bell	10	14	3	29
<i>Mitella senecioides</i> 'Slate Dabbler'	Rainier Blue grass, 3rd year	10	14	1	29
<i>Salix</i> 'Saxifraga'	Salix	10	14	4	17
<i>Urtica dioica</i>	Stinging Nettle	10	14	3	29
<i>Thymus praecox</i> 'Herbacea'	Common Thyme	10	14	1	29
<i>Hypericum perforatum</i> 'St. John's Wort'	St. John's Wort	10	14	1	29
<i>Salix repens</i>	Salix	10	14	1	29
<i>Urtica dioica</i>	Stinging Nettle	10	14	1	29
Total (m²)			140	8	313

Plant Name	Specification	% mix	Area/m ²	density per m ²	Total Plants
Enhanced Meadow Mix					
<i>Urtica dioica</i>	Stinging Nettle	10	14	1	29
<i>Androsace</i> 'Golden Bell'	Golden Bell	10	14	3	29
<i>Mitella senecioides</i> 'Slate Dabbler'	Rainier Blue grass, 3rd year	10	14	1	29
<i>Salix</i> 'Saxifraga'	Salix	10	14	4	17
<i>Urtica dioica</i>	Stinging Nettle	10	14	3	29
<i>Thymus praecox</i> 'Herbacea'	Common Thyme	10	14	1	29
<i>Hypericum perforatum</i> 'St. John's Wort'	St. John's Wort	10	14	1	29
<i>Salix repens</i>	Salix	10	14	1	29
<i>Urtica dioica</i>	Stinging Nettle	10	14	1	29
Total (m²)			140	8	313

Plant Name	Specification	% mix	Area/m ²	density per m ²	Total Plants
Riparian Buffer Mix (Over Exposed)					
<i>Urtica dioica</i>	Stinging Nettle	10	14	1	29
<i>Androsace</i> 'Golden Bell'	Golden Bell	10	14	3	29
<i>Mitella senecioides</i> 'Slate Dabbler'	Rainier Blue grass, 3rd year	10	14	1	29
<i>Salix</i> 'Saxifraga'	Salix	10	14	4	17
<i>Urtica dioica</i>	Stinging Nettle	10	14	3	29
<i>Thymus praecox</i> 'Herbacea'	Common Thyme	10	14	1	29
<i>Hypericum perforatum</i> 'St. John's Wort'	St. John's Wort	10	14	1	29
<i>Salix repens</i>	Salix	10	14	1	29
<i>Urtica dioica</i>	Stinging Nettle	10	14	1	29
Total (m²)			140	8	313

Plant Name	Specification	% mix	Area/m ²	density per m ²	Total Plants
Spring Sub-Mix					
<i>Urtica dioica</i>	Stinging Nettle	10	14	1	29
<i>Androsace</i> 'Golden Bell'	Golden Bell	10	14	3	29
<i>Mitella senecioides</i> 'Slate Dabbler'	Rainier Blue grass, 3rd year	10	14	1	29
<i>Salix</i> 'Saxifraga'	Salix	10	14	4	17
<i>Urtica dioica</i>	Stinging Nettle	10	14	3	29
<i>Thymus praecox</i> 'Herbacea'	Common Thyme	10	14	1	29
<i>Hypericum perforatum</i> 'St. John's Wort'	St. John's Wort	10	14	1	29
<i>Salix repens</i>	Salix	10	14	1	29
<i>Urtica dioica</i>	Stinging Nettle	10	14	1	29
Total (m²)			140	8	313

Plant Name	Specification	% mix	Area/m ²	density per m ²	Total Plants
Willflower Grass Mix					
<i>Urtica dioica</i>	Stinging Nettle	10	14	1	29
<i>Androsace</i> 'Golden Bell'	Golden Bell	10	14	3	29
<i>Mitella senecioides</i> 'Slate Dabbler'	Rainier Blue grass, 3rd year	10	14	1	29
<i>Salix</i> 'Saxifraga'	Salix	10	14	4	17
<i>Urtica dioica</i>	Stinging Nettle	10	14	3	29
<i>Thymus praecox</i> 'Herbacea'	Common Thyme	10	14	1	29
<i>Hypericum perforatum</i> 'St. John's Wort'	St. John's Wort	10	14	1	29
<i>Salix repens</i>	Salix	10	14	1	29
<i>Urtica dioica</i>	Stinging Nettle	10	14	1	29
Total (m²)			140	8	313

Plant Name	Specification	% mix	Area/m ²	density per m ²	Total Plants
Amenity Pitch Grass Mix					
<i>Urtica dioica</i>	Stinging Nettle	10	14	1	29
<i>Androsace</i> 'Golden Bell'	Golden Bell	10	14	3	29
<i>Mitella senecioides</i> 'Slate Dabbler'	Rainier Blue grass, 3rd year	10	14	1	29
<i>Salix</i> 'Saxifraga'	Salix	10	14	4	17
<i>Urtica dioica</i>	Stinging Nettle	10	14	3	29
<i>Thymus praecox</i> 'Herbacea'	Common Thyme	10	14	1	29
<i>Hypericum perforatum</i> 'St. John's Wort'	St. John's Wort	10	14	1	29
<i>Salix repens</i>	Salix	10	14	1	29
<i>Urtica dioica</i>	Stinging Nettle	10	14	1	29
Total (m²)			140	8	313

Cynllun Diwygiedig
Amended Plan

- NOTES:
- Please refer to BOWLES-XXX-DR-L-0301 for additional landscape schedules
- PS1 210126 Landscape Layout T1 KR
 - PS2 220726 Sited Green Spaces T1 KR
 - PS4 220825 Stage 4 Plan A11 KR
 - PS1 140225 Stage 4 Issue T1 KR
 - PS2 26/12/24 Planning Updated (re design change) A11 KR

Revision	Date	Description	Drawn/Approved
1		THIS DRAWING IS COPYRIGHT PROTECTED AND MAY NOT BE REPRODUCED IN WHOLE OR PART WITHOUT WRITTEN AUTHORITY FROM THE OWNER.	
		Client: Gwynedd Council	
		Project: Borthnewydd Community Campus	
		Dwg Title: Softworks Arrangement	
		Created on: 24/01/24	Created by: MN
		Approved by: KR	
		Scale: 1:400	Size: A1
		Workstage: Stage 4	
		Dwg No.: BOW-LS1-XX-DR-L-0302	Subsidiary: 53
		Revision: P06	

land studio

By Department Legend

- Classroom
- Classroom (Nursery)
- Classroom (Reception)
- Cloaks
- Cynllun Meithrin
- Classroom (Cynllun)
- Welfare
- Shared Resources
- Storage
- Comms
- Kitchen
- Staff
- ALN
- Community
- Circulation / Activity Space
- Circulation
- Plant



User Group	Number	Name	Area
School	R001	External Store	15.3 m ²
School	R002	External Store (Under Stair)	4.1 m ²
School	R003	Staff Staff LGF	13.3 m ²
School	R004	Platform Lift (Lower Ground)	3.4 m ²
School	R005	Circulation	33.9 m ²
School	R006	Classroom Year 02 (Infant)	61.8 m ²
School	R007	Store	6.0 m ²
School	R008	Infant Cloaks	10.2 m ²
School	R009	Infant WCs	9.1 m ²
School	R010	Classroom Year 03 (Infant)	62.0 m ²
School	R011	Store	9.3 m ²
School	R012	Cleaner	8.3 m ²
School	R013	Classroom Year 03 (Junior)	60.2 m ²
School	R014	Reception	16.1 m ²
School	R015	Junior Cloaks	8.9 m ²
School	R016	Junior WCs	19.0 m ²
School	R017	Classroom Year 04 (Junior)	66.2 m ²
School	R018	Store	7.7 m ²
School	R019	Lower Atrium	26.7 m ²
School	R020	Distribution	64.0 m ²
School	R021	Reception Cloaks	6.4 m ²
School	R022	Reception	69.1 m ²
School	R023	Reception Store	5.1 m ²
School	R024	Reception WCs	9.0 m ²
School	R025	Riser 07 (LGF)	0.7 m ²

User Group	Number	Name	Area
School	R031a	Atrium / Activity Space	89.0 m ²
School	R032b	Head Wash	2.7 m ²
School	R033	Staff Staff	6.7 m ²
School	R034	Head Teacher Office	10.1 m ²
School	R035	Secure Store	6.5 m ²
School	R036	Riser	2.1 m ²
School	R037	Acc. WC	3.5 m ²
School	R038	School Reception	11.2 m ²
School	R039	Group Room 01	10.3 m ²
School	R040	Riser 01 (GF)	0.7 m ²
School (Nursery)	R041	Nursery Cloaks	6.9 m ²
ALN	R042	ALN	60.8 m ²
School (Nursery)	R043	Nursery Store	3.4 m ²
School (Nursery)	R044	Nursery WCs	9.2 m ²
School	R045	Circulation	15.5 m ²
School	R046	Riser 04 (GF)	0.7 m ²
ALN	R047	Acc Entrance	4.2 m ²
School (Nursery)	R048	Nursery	66.8 m ²
ALN	R049	ALN Store	3.3 m ²
ALN	R050	ALN WC	2.2 m ²
ALN	R051	ALN Shared WC / Hygiene Room	6.4 m ²
School	R052	Hall	156.8 m ²
School	R053	Shared WC	3.9 m ²
School	R054	Shared WC	3.1 m ²
School	R055a	Shared Store (PE)	15.1 m ²
School	R055b	Shared Store (Storage)	12.1 m ²
School	R056	Services / Chair Store	18.3 m ²
School	R057	Kitchen	54.1 m ²
School	R058	Kitchen Store Area	14.1 m ²
School	R059	Kitchen Entrance Lobby	4.7 m ²
School	R060	CPD Store	2.1 m ²
School	R061	Janitor	4.1 m ²
School	R062	Change / WC	3.1 m ²
School	R063	Kitchen Office	3.9 m ²
Cynllun Meithrin	R064	Circulation	15.1 m ²
Cynllun Meithrin	R065	Cynllun Store	7.0 m ²
Cynllun Meithrin	R066	Cynllun Cloaks	7.8 m ²
Cynllun Meithrin	R067	Cynllun Classroom	14.8 m ²

User Group	Number	Name	Area
Cynllun Meithrin	R037	Cynllun Staff WC / Nappy Change	7.7 m ²
Cynllun Meithrin	R038	ALN	60.8 m ²
Cynllun Meithrin	R039	Cynllun Office / Staff Room	10.9 m ²
Cynllun Meithrin	R040	Cynllun WCs	9.1 m ²
Cynllun Meithrin	R041	Cynllun Kitchen	7.1 m ²
Community Centre	R041b	Entrance Lobby	10.4 m ²
Community Centre	R042	Riser / Distribution	0.9 m ²
Community Centre	R043	Reception Lobby	4.8 m ²
Community Centre	R044	Interview Room	6.3 m ²
Community Centre	R045	Changing Place WC	12.2 m ²
Community Centre	R046	Community Studio Hall	18.9 m ²
Community Centre	R047	Community Store 01	6.3 m ²
Community Centre	R048	Community Store 02	1.3 m ²
Community Centre	R049	Circulation	18.2 m ²
Community Centre	R050	Cleaner	1.9 m ²
Community Centre	R051	Acc. WC	2.6 m ²
Community Centre	R052	Community Kitchen	10.3 m ²
Community Centre	R053	Acc. WC	3.5 m ²
Community Centre	R054	Meeting / Group Room	10.2 m ²
Community Centre	R055	Community Store 03	1.0 m ²
Community Centre	R056	Community Store 04	1.1 m ²
Cynllun Meithrin	R057	Cynllun Draft Lobby	10.4 m ²
Community Centre	R058	Draft Lobby	8.5 m ²
School	R059	Reception Store	0.6 m ²

Cynllun Diwygiedig
Amended Plan



Area Schedule (GFA - Building Gross Internal Floor Area)	
Name	Area
GFA - Lower Ground Floor	353.2 m ²
GFA - Upper Ground Floor	399.8 m ²
GFA - First Floor	351.7 m ²
GFA - First Floor (Plant over Kitchen)	114.6 m ²
Grand total: 4	2359.8 m ²

- General Notes**
2. All of the designs are the sole property of TACP Architects Ltd and may not be used without their written agreement.
 3. All prints, specifications and their copyright are the property of TACP Architects Ltd
 4. All dimensions shall be checked on site before commencement of shop drawings, manufacture and all discrepancies must be reported to TACP Architects Ltd
 5. Do not scale off drawings.

Rev	Date	Description	By	Check
P14	2025-12-10	Opening to reception increased to accommodate accessible users of reception desk	MR	AJ
P15	2025-12-10	Door / Window position amended to allow for radiator placement	MR	AJ
P16	2026-01-09	Single door side screen omitted. Drawing issued following VE and Re Design Exercise.	MR	AJ

Client
Cyngor Gwynedd & Ysgol Bontnewydd

Project Title
Campws Cymuned Bontnewydd

Sheet Name
Ground Floor GA Plan

Classification
S4

Scale
1:100@A1

Date
06/27/24

Drawn
MR

Checked
AJ

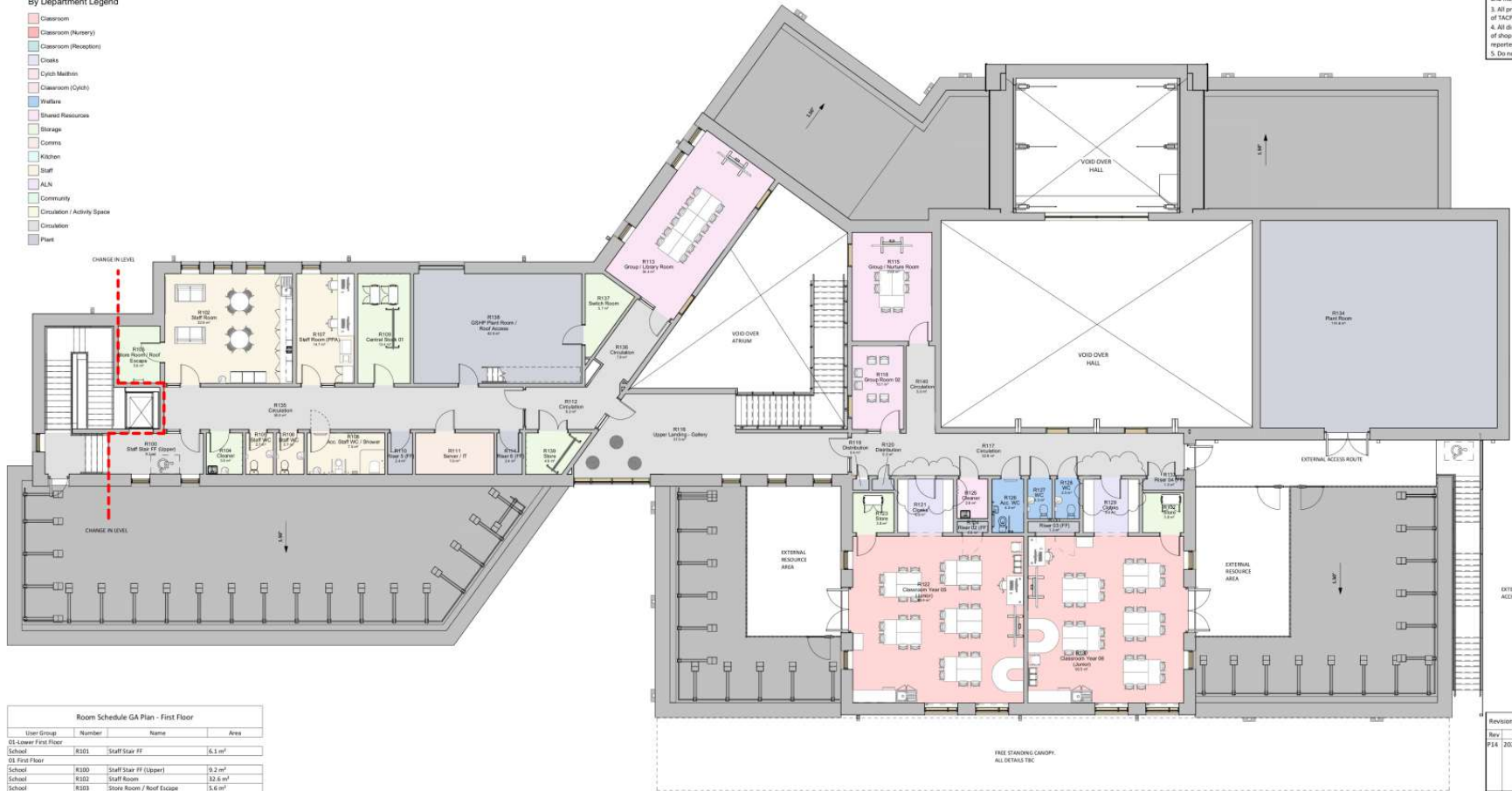
Job Number
23012 BON-TACP-PB-ZR-DR-A-1000

Revision
P16

TACP Architects Ltd
Ffynbrake House
Wrexham Technology Park,
Wrexham, LL13 7YT
01978 282181
admin@tacaparchitects.co.uk
www.tacaparchitects.co.uk

By Department Legend

- Classroom
- Classroom (History)
- Classroom (Reception)
- Cloaks
- Cyclic Matrix
- Classroom (Cyclic)
- Yellows
- Shared Resources
- Storage
- Corms
- Kitchen
- Staff
- ALN
- Community
- Circulation / Activity Space
- Circulation
- Plant



General Notes

2. All of the designs are the sole property of TACP Architects Ltd and may not be used without their written agreement.
3. All prints, specifications and their copyright are the property of TACP Architects Ltd.
4. All dimensions shall be checked on site before commencement of shop drawings, manufacture and all discrepancies must be reported to TACP Architects Ltd.
5. Do not scale off drawings.

Room Schedule GA Plan - First Floor				
User Group	Number	Name	Area	
01 Lower First Floor				
School	R101	Staff Staff FF	16.1 m ²	
02 First Floor				
School	R100	Staff Staff FF (Upper)	9.2 m ²	
School	R102	Staff Room	12.6 m ²	
School	R103	Store Room / Roof Escape	15.6 m ²	
School	R104	Cleaner	4.5 m ²	
School	R105	Staff WC	2.7 m ²	
School	R106	Staff WC	2.7 m ²	
School	R107	Staff Room (PPA)	14.7 m ²	
School	R108	Acc. Staff WC / Shower	7.5 m ²	
School	R109	Central Store 02	13.4 m ²	
School	R110	Riser 5 (FF)	2.4 m ²	
School	R111	Server / IT	7.6 m ²	
School	R112	Circulation	4.2 m ²	
School	R113	Group / Library Room	34.4 m ²	
School	R114	Riser 6 (FF)	2.4 m ²	
School	R115	Group / Nuture Room	39.6 m ²	
School	R116	Upper Landing - Gallery	37.0 m ²	
School	R117	Circulation	12.8 m ²	
School	R118	Group Room 02	10.1 m ²	
School	R119	Distribution	0.4 m ²	
School	R120	Distribution	10.5 m ²	
School	R121	Cloaks	16.9 m ²	
School	R122	Classroom Year 05 (Junior)	46.4 m ²	
School	R123	Store	1.8 m ²	
School	R124	Riser 02 (FF)	10.8 m ²	
School	R125	Cleaner	2.8 m ²	
School	R126	Acc. WC	4.0 m ²	
School	R127	WC	2.3 m ²	
School	R128	WC	2.3 m ²	
School	R129	Cloaks	16.9 m ²	
School	R130	Classroom Year 06 (Junior)	46.5 m ²	
School	R131	Riser 03 (FF)	1.3 m ²	
School	R132	Store	1.8 m ²	
School	R133	Riser 04 (FF)	1.0 m ²	
School	R134	Plant Room	114.8 m ²	
School	R135	Circulation	19.5 m ²	
School	R136	Circulation	7.9 m ²	
School	R137	Switch Room	5.7 m ²	
School	R138	GHSP Plant Room / Roof Access	42.9 m ²	
School	R139	Store	4.9 m ²	
School	R140	Circulation	1.6 m ²	

Cynllun Diwygiedig
Amended Plan



Area Schedule (GFA - Building Gross Internal Floor Area)	
Name	Area
GFA - Lower Ground Floor	553.2 m ²
GFA - Upper Ground Floor	1039.4 m ²
GFA - First Floor	561.7 m ²
GFA - First Floor (Plant over Kitchen)	114.8 m ²
Grand Total: 4	2248.6 m ²

Revisions				
Rev.	Date	Description	By	Check
P14	2025-11-17	First Floor plant room increased/MR following meeting with contractor 15/11/2025. Plant room increased to allow unimpacted roof layout and drainage.	MR	AJ
P15	2025-12-19	Door / Window position amended to allow for radiator placement	MR	AJ
P16	2026-01-09	Single door side screen omitted/MR Drawing issued following VE and Re Design Exemption.	MR	AJ

Client
Clymor Gwynedd & Ysgol Bontnewydd

Project Title
Campws Cymunedol Bontnewydd

Sheet Name
First Floor GA Plan

Classification Status
S4

Scale Date Drawn Checked
1 : 100@A1 06/27/24 MR AJ

Job Number Project/Drawings/Drawings/Room/Revision
23012 BON-TACP-PB-01-DR-A-1001 P16

TACP Architects Ltd

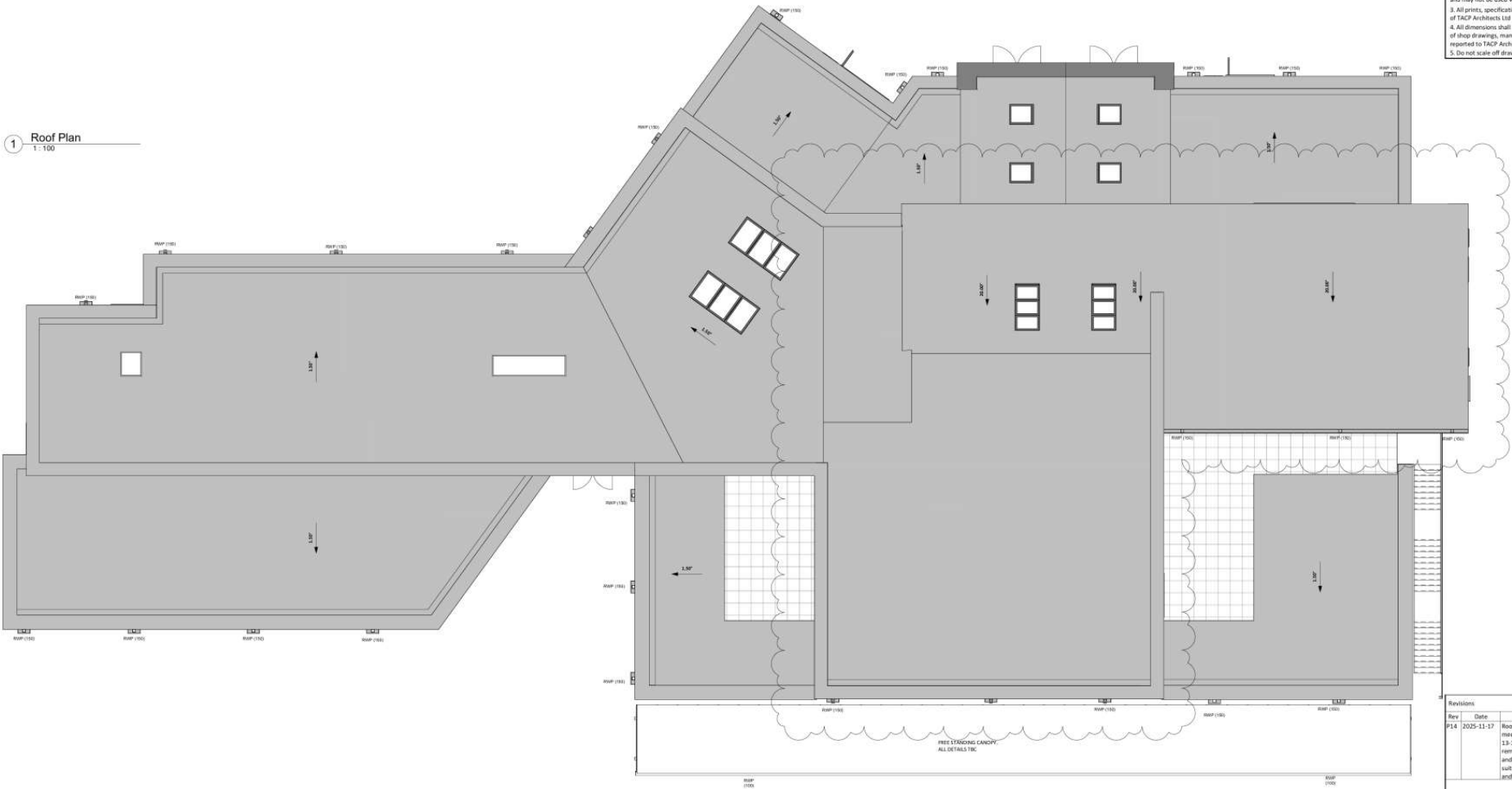
Penybroke House
Ellice Way,
Wrexham Technology Park,
Wrexham, LL13 7YF
01978 291161

admin@taccparchitects.co.uk
www.taccparchitects.co.uk **TACP Architects**

General Notes

- All of the designs are the sole property of TACP Architects Ltd and may not be used without their written agreement
- All prints, specifications and their copyright are the property of TACP Architects Ltd
- All dimensions shall be checked on site before commencement of shop drawings, manufacture and all discrepancies must be reported to TACP Architects Ltd
- Do not scale off drawings

1 Roof Plan
T-100



Rev	Date	Description	By	Check
P14	2025-11-17	Roof layout amended following meeting with contractor 13-11-2025. Valley gutter removed from main hall roof and main flat roof amended to suit along with parapet heights and setting out.	MR	AJ

Client
Cyngor Gwynedd & Ysgol Bontnewydd

Project Title
Campws Cymunedol Bontnewydd

Sheet Name
Roof GA Plan

Classification
S4

Scale
1 : 100@A1

Date
06/27/24

Drawn
MR

Checked
AJ

Job Number
23012

Project/Origination/Zone/Level/Room/Block/Number
BON-TACP-PB-RP-DR-A-1002

Revision
P14

TACP Architects Ltd

Pembroke House
Ellice Way
Wrexham Technology Park,
Wrexham, LL13 7YT
01978 291161
admin@tacparchitects.co.uk
www.tacparchitects.co.uk




**Cynllun Diwygiedig
Amended Plan**



01 Proposed Elevation - North West
1:100

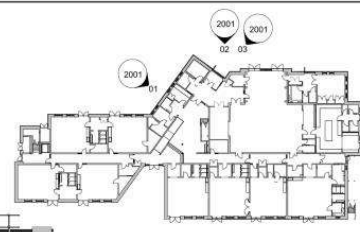
Cynllun Diwygiedig
Amended Plan



02 Proposed Elevation - North
1:100



03 Proposed Elevation - North East
1:100



- General Notes**
- All of the designs are the sole property of TACP Architects Ltd and may not be used without their written agreement.
 - All prices, specifications and their copyright are the property of TACP Architects Ltd.
 - All dimensions shall be checked on site before commencement of shop drawings, manufacture and all discrepancies must be reported to TACP Architects Ltd.
 - Do not scale off drawings.

- External Materials**
- External application with retained imperial brickwork. Brick bond to be uniform. Refer to separate drawings.
 - Feature brick bonding with retained imperial brickwork set in white. True bond and layout T&E. Refer to separate drawings.
 - Note Detailed.
 - External wall finished with thin coat render.
 - External wall finished with vertical thermowood treated timber cladding.
 - External wall finished with horizontal timber cladding in all heights.
 - External treated thermowood timber cladding to screen and secure emergency escape gate.
 - Note Detailed.
 - Note Detailed.
 - Roofing mounted PV array to M&E Engineers detail.
 - Note Detailed.
 - Aluminium rain water gullies including downpipes, hoppers and concealed gutters to the roof and ground level to be painted to exposed faces of polished roof.
 - UPVC Composite aluminium external windows and doors with PVC aluminium external fluting to reveals and drop off to windows.
 - PVC composite aluminium roof lights with automatic opening mechanism installed with the Building Management System where required, all to M&E Engineers detail.
 - PVC aluminium pressed metal fluting to all window and door reveals.
 - UPVC edge profile / coping exposed to roof covering to top of all insulated pavements.
 - PVC pressed metal fluting.
 - Demountable insulated panel by Kom - 80.33 demountable frame to achieve 0.30W/m²K U-values.
 - PVC Bevelled edge external fencing to external loading spaces on upper floor complete with lockable access gates all to be 1000mm high.
 - External treated thermowood timber floor with system to windows.
 - Note Detailed.
 - Note Detailed.
 - Flat pitched roof finished with waterproof felt covering.
 - PVC steel upright panelled to provide edge protection to flat roof installed to inside face of roof parapet.
 - PVC steel upright panelled to provide edge protection to flat roof to be freestanding weighted system on roof covering.
 - Freestanding canopy complete with all rain water goods and eaves covering. All details and colours T&E.
 - Feature external lighting installed.
 - PVC aluminium coping mechanically fixed to insulated parapet supports in line with manufacturers detail.
 - Feature Aluminium grille.
- ALL MATERIALS ARE T&E AND SUBJECT TO:
 • AVAILABILITY AND QUANTITY OF FINISHED/DEMOLITION MATERIAL.
 • CARBON FOOTPRINT OF NEW MATERIALS WHICH ARE SUBJECT TO A DETAILLED CARBON ASSESSMENT.

Rev	Date	Description	By	Check
P07	2025-05-16	Hall roof pitch amended to match existing (Structural Beams)	MR	AJ
P08	2025-11-20	Roofscape and building elevations updated following VE Exercise	MR	AJ
P09	2025-12-19	Roof and parapet levels amended following increase in roof insulation	MR	AJ
P10	2026-01-05	Parapet edge protection omitted and parapet heights amended	MR	AJ

Client
 Cyngor Gwynedd & Ysgol Bontnewydd

Project Title
 Campws Cymunedol Bontnewydd

Sheet Name
 Proposed Elevations - Sheet 1

Classification Status
 S4

Scale Date Drawn Checked
 As indicated@A1 28/06/24 MR AJ

Job Number Project/Originator/Drawn/Checked/Revision
 23012 BON-TACP-PB-XX-DR-A-2001 P10

TACP Architects Ltd
 Pembroke House
 Ellice Way,
 Wrexham Technology Park,
 Wrexham, LL13 7YT
 01978 291161
 admin@taccparchitects.co.uk
 www.taccparchitects.co.uk





01 Proposed Elevation - East
1:100



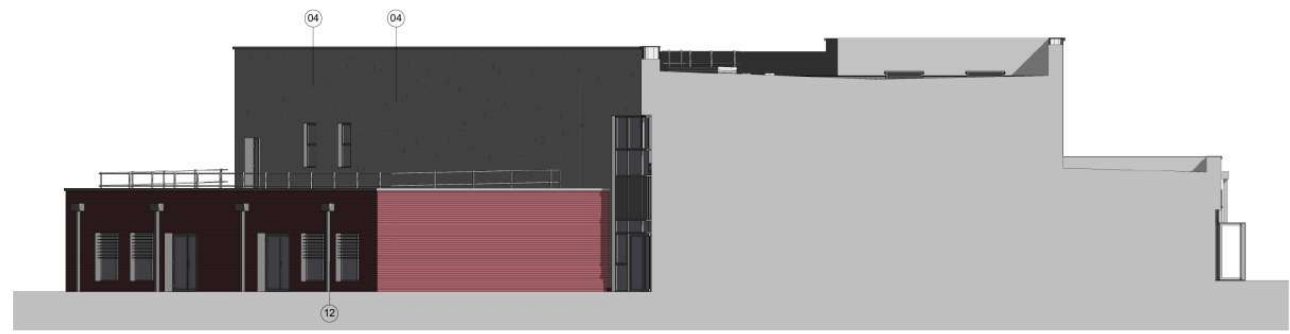
**Cynllun Diwygiedig
Amended Plan**

- External Materials**
1. External wall finished with thermal mineral brickwork. Brick bond to be determined. Refer to Separate drawings.
 2. Feature brick bonding with insulated mineral brickwork set in relief. True bond and layout TBC. Refer to Separate drawings.
 3. Note Detailed.
 4. External wall finished with thin coat render.
 5. External wall finished with vertical thermowood treated timber cladding.
 6. External wall finished with horizontal thermowood treated timber cladding.
 7. External treated thermowood timber cladding to screen and secure emergency escape gate.
 8. Note Detailed.
 9. Note Detailed.
 10. Roof/Parapet PVC array to MBE Engineers details.
 11. Note Detailed.
 12. Aluminium rain water goods including downpipes, hoppers and concealed gutters to flat roofs and pressed metal box gutter to exposed eaves of pitched roofs.
 13. PFC composite aluminium external windows and doors with PFC aluminium external finishing to reveals and drip sill to windows.
 14. PFC composite Aluminium roof lights with automatic opening actuators controlled with the Building management System where required. All to MBE Engineers details.
 15. PFC Aluminium pressed metal finishing to all windows and door reveals.
 16. GWP verge profile / coping integral to roof covering to top of all insulated parapets.
 17. PFC pressed metal finishing.
 18. Demountable insulated panel by 'Koon' - M133 demountable louvre to adjacent 'Dormer' to Wall.
 19. PFC Bowler rafting or similar facing to external teaching spaces on upper floors complete with lockable access gates at to be 2000mm high.
 20. External treated thermowood timber frame soffit system to windows.
 21. Note Detailed.
 22. Note Detailed.
 23. Flat pitched roof finished with reinforced felt covering.
 24. PFC fixed upright gablett to provide edge protection to flat roof finished to soffit face of roof parapet.
 25. PFC fixed upright gablett to provide edge protection to flat roof to be freestanding weighted system on roof covering.
 26. Freestanding canopy complete with all rain water goods and copse covering. All details and colour TBC.
 27. Feature external signage installed.
 28. PFC aluminium coping mechanically fixed to insulated parapet upstands in line with manufacturer details.
 29. Feature aluminium panel.
- ALL MATERIALS ARE TBC AND SUBJECT TO:
 • AVAILABILITY AND QUALITY OF SCHEDULED DEMOLITION MATERIAL
 • CARBON EXPENDITURE OF NEW MATERIALS WHICH ARE SUBJECT TO A DETAILED CARBON ASSESSMENT

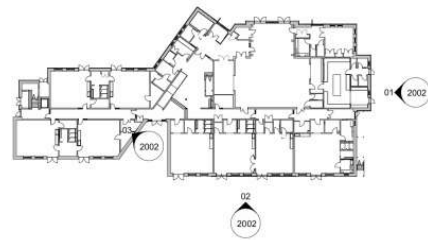
- General Notes**
1. All of the designs are the sole property of TACP Architects Ltd and may not be used without their written agreement.
 2. All prints, specifications and their copyright are the property of TACP Architects Ltd.
 3. All dimensions shall be checked on site before commencement of shop drawings, manufacture and all discrepancies must be reported to TACP Architects Ltd.
 4. All dimensions shall be checked on site before commencement of shop drawings, manufacture and all discrepancies must be reported to TACP Architects Ltd.
 5. Do not scale off drawings.



02 Proposed Elevation - South
1:100



03 Proposed Elevation - South West
1:100



Rev	Date	Description	By	Check
P07	2025-05-16	Hall roof pitch amended to match existing Glulam Beams	MR	AJ
P08	2025-11-20	Roofscape and building elevations updated following VE Exercise	MR	AJ
P09	2025-12-18	Roof and parapet levels amended following increase in roof insulation	MR	AJ
P10	2026-01-06	Parapet edge protection omitted and parapet heights amended.	MR	AJ

Client
 Cyngor Gwynedd & Ysgol Bontnewydd

Project Title
 Campws Cymunedol Bontnewydd

Sheet Name
 Proposed Elevations - Sheet 2

Classification Status
54

Scale Date Drawn Checked
 As indicated@A1 28/06/24 MR AJ

Job Number Project/Originator/Zone/Level/Form/Block/Number
 23012 BON-TACP-PB-XX-DR-A-2002 P10

TACP Architects Ltd

Pembroke House
 Elice Way,
 Wrexham Technology Park,
 Wrexham, LL13 7YF
 01978 291161

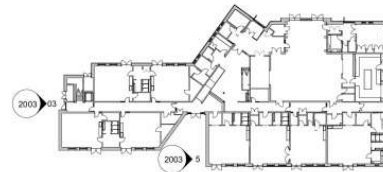
admin@tacparchitects.co.uk
 www.tacparchitects.co.uk



03 Proposed Elevation - West
1:100



5 Proposed Elevation - West 02
1:100



- General Notes**
- All of the designs are the sole property of TACP Architects Ltd and may not be used without their written agreement.
 - All prices, specifications and their copyrights are the property of TACP Architects Ltd.
 - All dimensions shall be checked on site before commencement of deep drawings, manufacture and all discrepancies must be reported to TACP Architects Ltd.
 - Do not scale off drawings.

- External Materials**
- External wall finished with retained imperial brickwork. Brick bond to be determined. Refer to separate drawing.
 - Feature brick bonding with retained imperial brickwork set on relief. True bond and level TIC. Refer to separate drawings.
 - Note Omitted
 - External wall finished with thin coat render.
 - External wall finished with vertical thermoseal treated timber cladding.
 - External wall finished with retained roofing eaves installed as roof overhang.
 - External treated thermoseal timber cladding to screen and secure emergency egress gate.
 - Note Omitted
 - Note Omitted
 - Roofing: microsil PV array to MME Engineers details.
 - Note Omitted
 - Aluminium rain water goods including downpipes, hoppers and concealed gutters to flat roof and pressed metal box gutter to suspended access of pitched roof.
 - PVC Composite aluminium external shutters and doors with PVC aluminium external flapping to control and stop spill to window.
 - PVC composite aluminium rooflights with automatic covering actuators interlocked with the Building Management System where required. A/E to MME Engineers details.
 - PVC Aluminium grained metal flatlights to all window and door reveals.
 - GFP verge profiles / coping integral to roof covering to top of all insulated parapets.
 - PVC pressed metal flashing.
 - Removable insulated panel by Bam - RL33 demountable beams to achieve 0.20W/m² U-value.
 - PVC Roofing eaves or similar fencing to external teaching spaces on upper floor complete with lockable access gates A/E to be 1000mm high.
 - Internal treated thermoseal timber floor sited external to window.
 - Note Omitted
 - Note Omitted
 - Flat / pitched roof finished with reinforced felt covering.
 - PVC fixed eave parallel to provide edge protection to flat roof located to inside face of roof parapet.
 - PVC fixed eave parallel to provide edge protection to flat roof to be freestanding weighted system on roof covering.
 - Roofing: parapet complete with all rain water goods and eave covering. All details and colours TIC.
 - Feature external eaves finished.
 - PVC aluminium coping mechanically fixed to insulated parapet upstands in line with manufacturer details.
 - Feature aluminium panel.
- ALL MATERIALS ARE TIC AND SUBJECT TO:
 • AVAILABILITY AND QUALITY OF SUPPLIED SPECIFICATION MATERIAL
 • CARBON FOOTPRINT OF NEW MATERIALS WHICH ARE SUBJECT TO A DETAILED CARBON ASSESSMENT



**Cynllun Diwygiedig
Amended Plan**

Rev	Date	Description	By	Check
P06	2025-11-20	Roofscape and building elevations updated following VE Exercise. Grounded Elevations Omitted in line with updated plan.	MR	AI
P07	2025-12-19	Roof and parapet levels amended following increase in roof elevation.	MR	AI
P08	2026-01-05	Parapet edge protection omitted and parapet heights amended.	MR	AI

Client
 Cyngor Gwynedd & Ysgol Bontnewydd

Project Title
 Campws Cymunedol Bontnewydd

Sheet Name
 Proposed Elevations - Sheet 3

Classification
 Status
 S4

Scale
 Date
 Drawn
 Checked

As indicated@A1 08/27/24 MR AJ

Job Number Project-Organisation-Zone-Level/Room-Revision-Number Revision
 23012 BON-TACP-PB-XX-DR-A-2003 P08

TACP Architects Ltd
 Pembroke House
 Ellice Way,
 Wreatham Technology Park,
 Wreatham, LL13 7YT
 01978 291161
 admin@tarparchitects.co.uk
 www.tarparchitects.co.uk



Example of:
Timber Rainscreen Cladding (Photograph indicative)
Treated Thermowood cladding to external walls. True type, size and layout to be developed



Example of:
Slate Wall Shingles / Cladding (Photograph indicative)
Roofing slate installed as rainscreen cladding on vertical external walls.

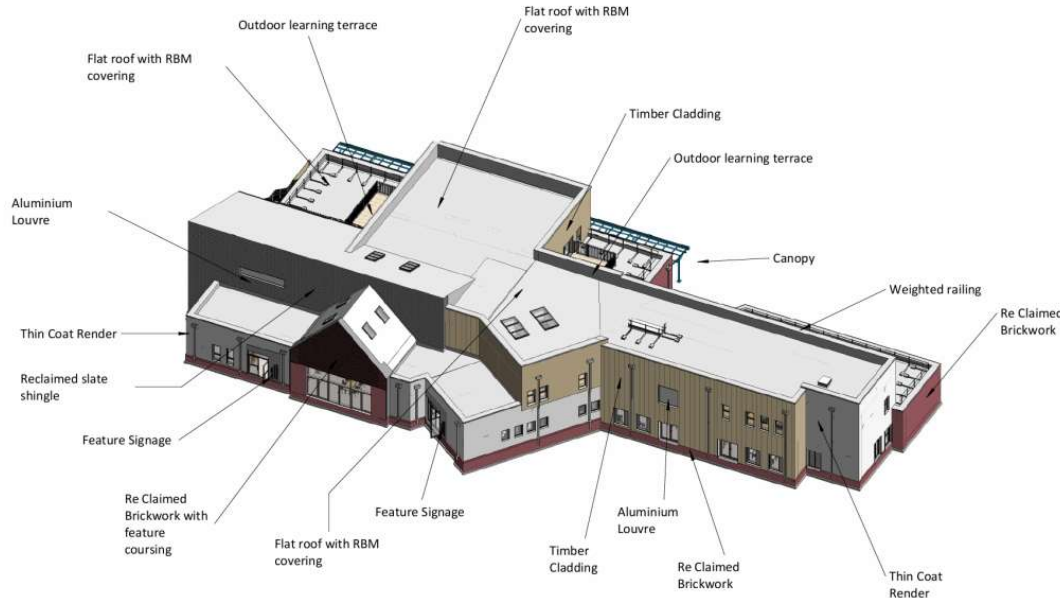
Existing roofing slate to be salvaged form demolition. Shortfall made up of matching slates sourced form elsewhere.



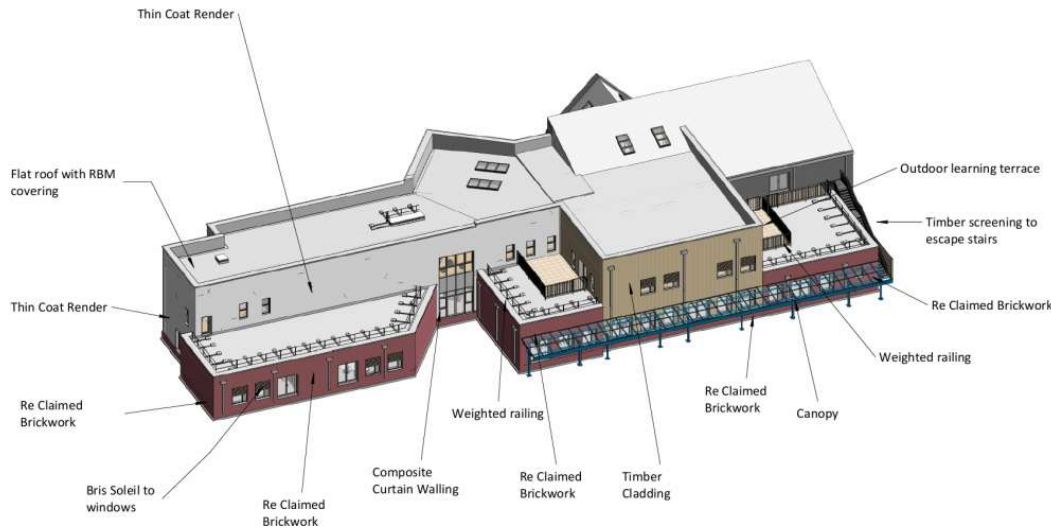
Example of:
Thin Coat Render (Photograph indicative)
Actual colour to be confirmed. All render finishes to be terminated in pressed metal flashing's and corner trims where needed



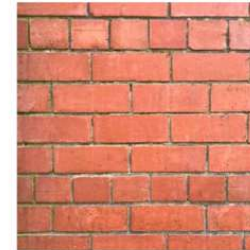
Example of:
Timber Bris Soleil (Photograph indicative)
Actual colour and fitting to be confirmed. Timber Bris soleil to be installed to south facing classroom windows with horizontal profile and PPC support frame.



1 Materials - Front Axonometric



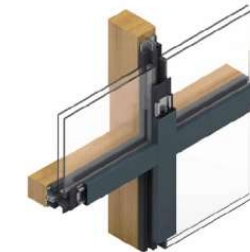
2 Materials - Rear Axonometric



Example of:
Feature Brick Bond (Chevron) (Photograph indicative)

Existing imperial brickwork to be salvaged form demolition. Shortfall made up of matching brickwork sourced form elsewhere.

True brick bond to be determined.



Example of:
Composite Timber / Aluminium Curtain Walling
Curtain walling / windows to be composite
Doors to be aluminium inside and out
All specifications to be confirmed but installed with all necessary flashing's and wall reveal linings.

Linings to be pressed metal flashing's all TBC.

General Notes

1. All of the designs are the sole property of TACP Architects Ltd and may not be used without their written agreement
2. All prints, specifications and their copyright are the property of TACP Architects Ltd
3. All dimensions shall be checked on site before commencement of shop drawings, manufacture and all discrepancies must be reported to TACP Architects Ltd
4. Do not scale off drawings



Cynllun Diwygiedig
Amended Plan

NOTE:
The extent of available materials sourced form demolished buildings is currently unknown along with its ultimate condition and suitability for re use.

Any shortfall in available materials will be supplemented with new materials of matching type and colour.

All new materials are subject to a detailed embodied Carbon Assessment which will determine which materials will be employed.

On this basis, all materials, colours and layout arrangements are tbc.

Revisions

Rev	Date	Description	By	Check
P02	2024-11-27	Drawing updated in line with main plan. Drawing issued for Stage 03 Approval.	MR	AJ
CD1	2024-12-02	Drawing Approved at RIBA Stage 3. Issued for Planning	MR	AJ
P03	2025-11-20	Drawing updated following redesign during VE Exercise	MR	AJ
P04	2026-01-09	Drawing issued following VE and Re Design Exercise, no change to layout otherwise	JM	MR

Client

Cyngor Gwynedd & Ysgol Bontnewydd

Project Title

Campws Cymunedol Bontnewydd

Sheet Name

Sketch - Materials

Classification Status

\$4

Scale Date Drawn Checked

@A2 08/07/24 MR AJ

Job Number Project*Originator*Zone*Level*Form*Role*Number Revision

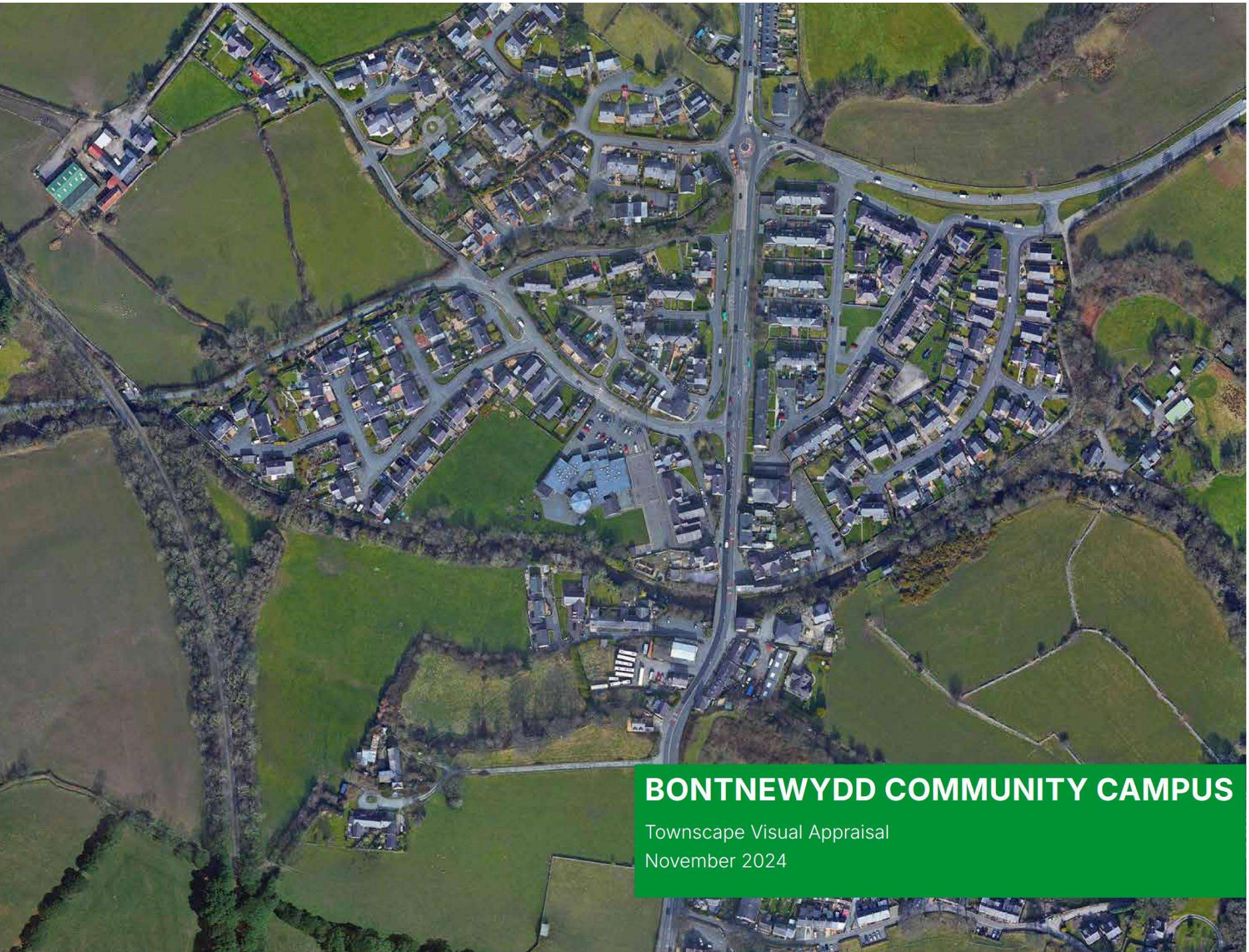
23012 BON-TACP-PB-ZZ- SK-A-8006 P04

TACP Architects Ltd

Pembroke House
Ellice Way,
Wrexham Technology Park,
Wrexham, LL13 7YT
01978 291161

admin@tacparchitects.co.uk
www.tacparchitects.co.uk





BONTNEWYDD COMMUNITY CAMPUS

Townscape Visual Appraisal
November 2024







