

Rhif y Cais / Application Number : C15/1358/42/LL

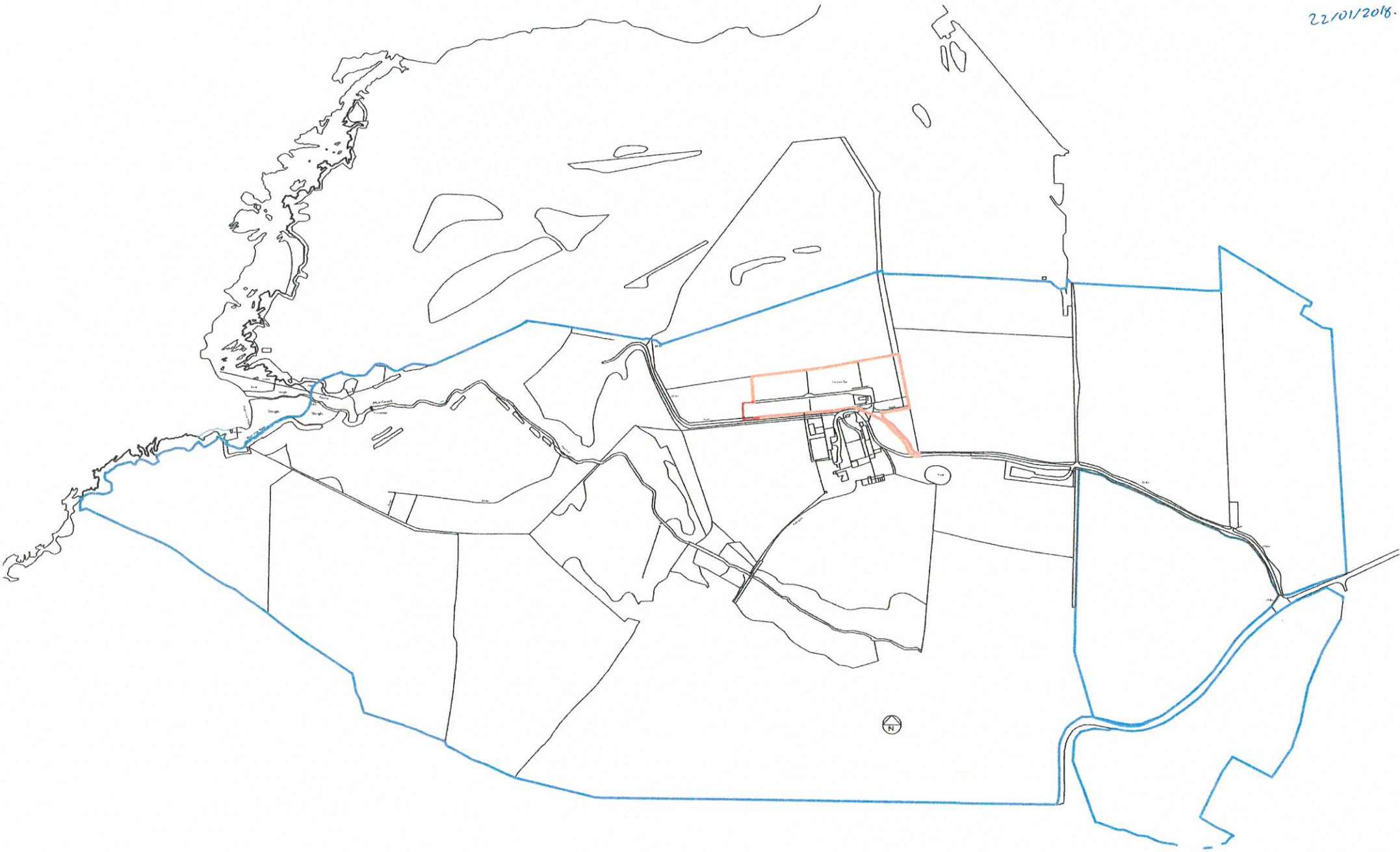
Cynllun lleoliad ar gyfer adnabod y safle yn unig. Dim i raddfa.
Location Plan for identification purposes only. Not to scale.



Atgynhyrchir y map hwn o Ddauydd yr Ordnance Survey gyda oherstrud yr Ordnance Survey ar ran Rheolwr Llyfrau, Eil Masurhdy, © Hawlfraint y Goron. Mae atgynhyrchu heb ganiatâd yn torri hawlfraint y Goron a gall hyn arwain at erlyniad neu achos sifil. Cynllun Gwynedd - 100023357 - 2008

This map is reproduced from Ordnance Survey material with the permission of Ordnance Survey on behalf of the Controller of Her Majesty's Stationery Office © Crown copyright. Unauthorised reproduction infringes Crown copyright and may lead to prosecution or civil proceedings. Cynllun Gwynedd - 100023357 - 2008

22/01/2016.



Pleidwch a chymryd mesuriadau graddfa oddi ar y dylluniad hwn
 Os yn amau - gofynnwch
 Do not scale from this drawing
 If in doubt - ask

Mae'r dylluniad hwn yn hyspwrdd Penseiri Russell & Hughes ac ni
 chaniateir ei gopïo neu ei sgwrsio heb ganiatâd

This drawing is the copyright of Russell & Hughes architects and
 must not be copied or reproduced without permission

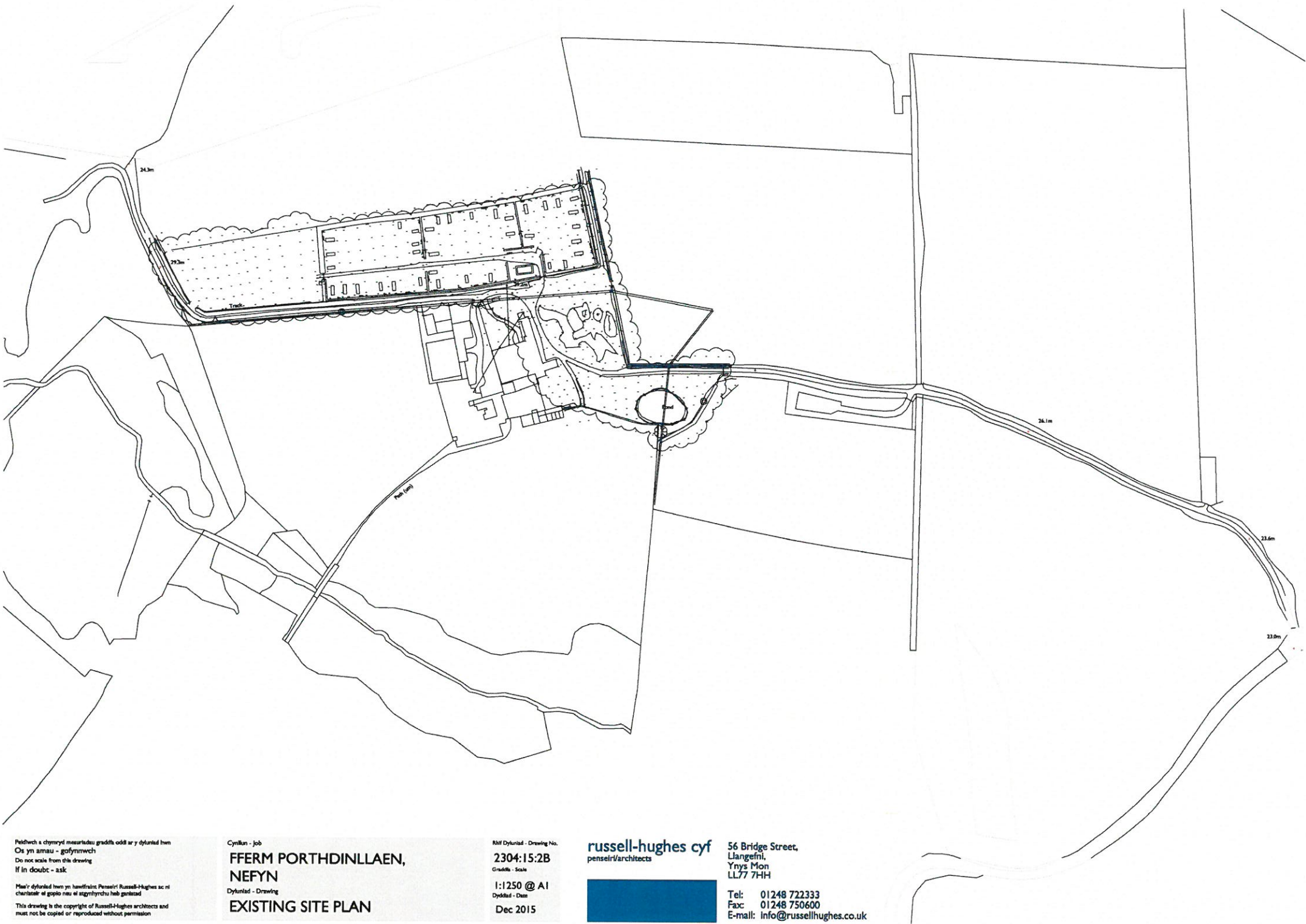
Cynllun - Job
**FFERM PORTHDINLLAEN,
 NEFYN**
 Dylluniad - Drawing
LOCATION PLAN

Rif Dylluniad - Drawing No.
2304:15:1
 Graddfa - Scale
1:5000 @ A3
 Dyddiad - Date
Dec 2015

russell-hughes cyf
 penseiri/architects

56 Bridge Street,
 Llangefni,
 Ynys Môn
 LL77 7HH

Tel: 01248 722333
 Fax: 01248 750600
 E-mail: info@russellhughes.co.uk



Pelltwch a chyrrwyf mesurïadau graddfa oddi ar y dylunad lwm
 Os yn arhau - gofynnwch
 Do not scale from this drawing
 If in doubt - ask

Mae'r dylunad lwm yn hawffraint Penseir/ Russell-Hughes ac ni
 chaniatáu ei gopïo neu ei sgwylhychu heb ganiatâd
 This drawing is the copyright of Russell-Hughes architects and
 must not be copied or reproduced without permission

Cynllun - Job
**FFERM PORTHDINLLAEN,
 NEFYN**
 Dylunad - Drawing
EXISTING SITE PLAN

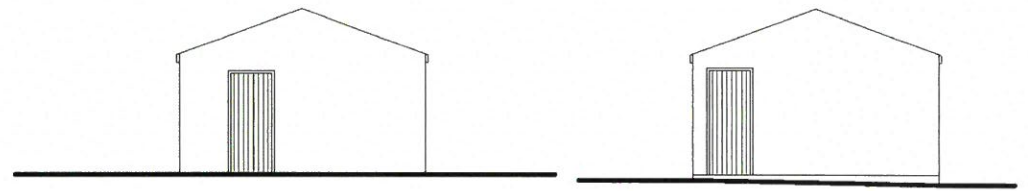
RHf Dylunad - Drawing No.
2304:15:2B
 Graddfa - Scale
1:1250 @ A1
 Dyddiad - Date
Dec 2015

russell-hughes cyf
 penseir/architects



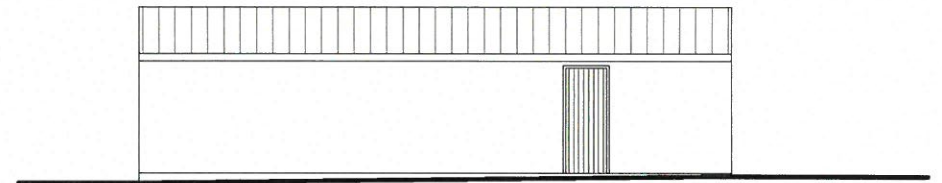
56 Bridge Street,
 Llangefni,
 Ynys Môn
 LL77 7HH

Tel: 01248 722333
 Fax: 01248 750600
 E-mail: info@russellhughes.co.uk

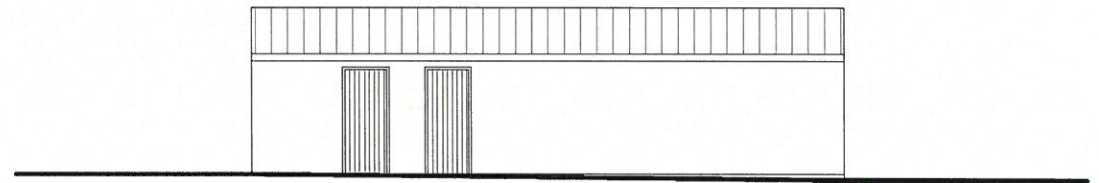


SIDE ELEVATION

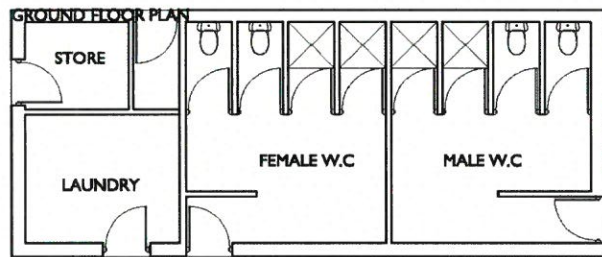
SIDE ELEVATION



FRONT ELEVATION



FRONT ELEVATION



GROUND FLOOR PLAN

Feldiwrch a chymeriwyd mesurfaeddu graidda oddi ar y dylunad hwn
 Os yn arnau - gofynnwch
 Do not scale from this drawing
 If in doubt - ask

Mae'r dylunad hwn yn hawlfraint Penseiri Russell-Hughes ac ni
 chaniateir ei gopïo neu ei aggrhyrchu heb ganiateid
 This drawing is the copyright of Russell-Hughes architects and
 must not be copied or reproduced without permission

Newffurddu - Amendments

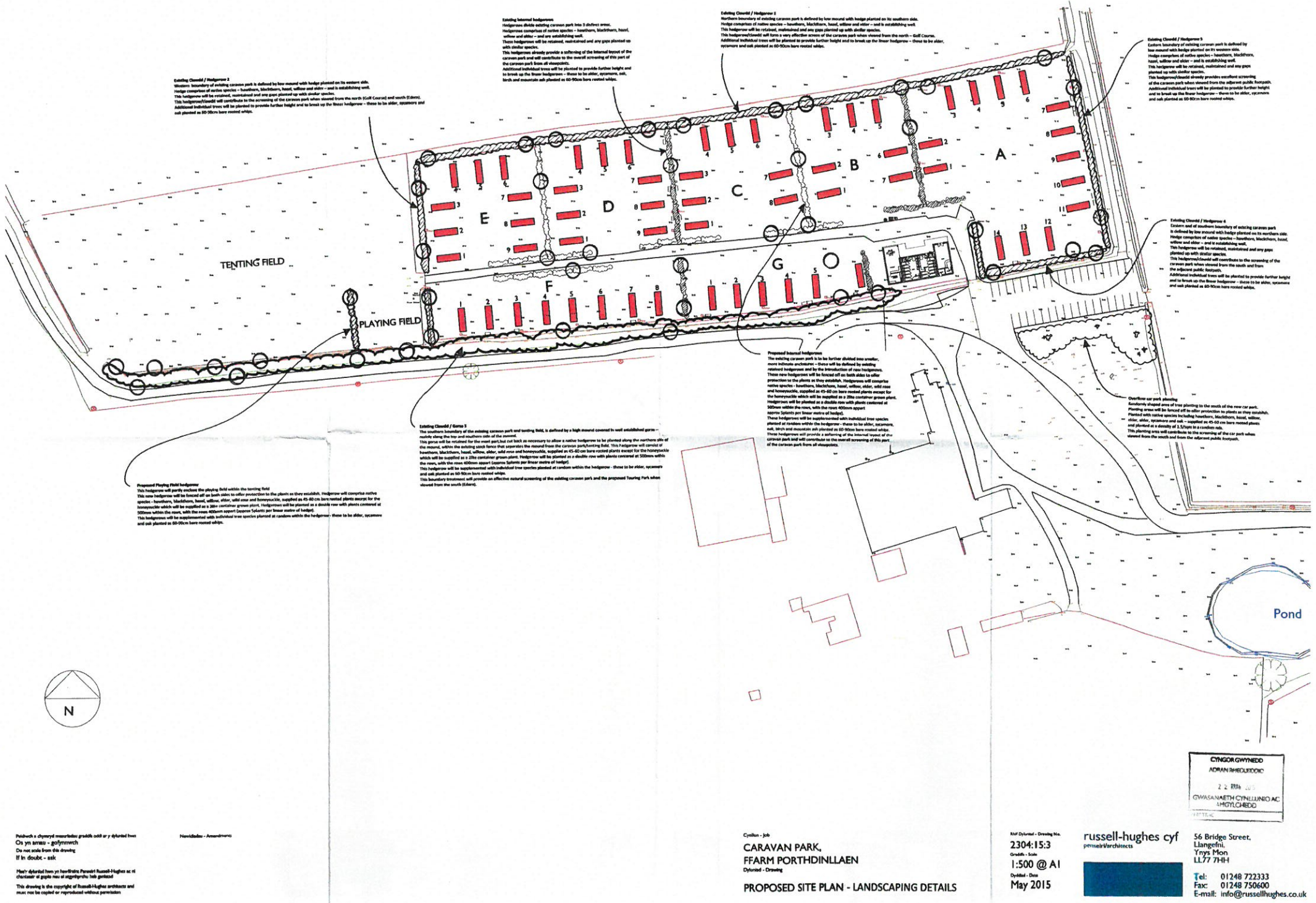
Cynllun - Job
**FFARM PORTHDINLLAEN,
 NEFYN.**
 Dylunad - Drawing
AS EXISTING

Rif Dylunad - Drawing No.
2304:15:4
 Graddfa - Scale
1:100 @ A3
 Dyddiad - Date
July 2015

russell-hughes cyf
 penseiri/architects

56 Bridge Street,
 Llangefni,
 Ynys Mon
 LL77 7HH

Tel: 01248 722333
 Ffôn: 01248 750600
 E-bost: info@russellhughes.co.uk



Existing Hedges / Hedge 2
 Western boundary of existing caravan park is defined by low mixed hedge planted on its western side. Hedge comprises of native species - Hawthorn, Blackthorn, Hazel, Willow and Alder - and is establishing well. This hedge will be retained, maintained and any gaps planted up with similar species. This hedge will contribute to the screening of the caravan park when viewed from the north (off Coed) and north (off Eith). Additional individual trees will be planted to provide further height and to break up the linear hedge - these to be Alder, Spycorn, Ash, Birch and Mountain Ash planted at 60-90cm bare rooted sizes.

Existing Internal Hedges
 Hedges divide existing caravan park into 3 distinct areas. Hedges comprise of native species - Hawthorn, Blackthorn, Hazel, Willow and Alder - and are establishing well. These hedges will be retained, maintained and any gaps planted up with similar species. This hedge will contribute to the overall screening of this part of the caravan park from all directions. Additional individual trees will be planted to provide further height and to break up the linear hedge - these to be Alder, Spycorn, Ash, Birch and Mountain Ash planted at 60-90cm bare rooted sizes.

Existing Hedges / Hedge 1
 Northern boundary of existing Caravan park is defined by low mixed hedge planted on its northern side. Hedge comprises of native species - Hawthorn, Blackthorn, Hazel, Willow and Alder - and is establishing well. This hedge will be retained, maintained and any gaps planted up with similar species. This hedge will contribute to the overall screening of the caravan park when viewed from the north - off Coed. Additional individual trees will be planted to provide further height and to break up the linear hedge - these to be Alder, Spycorn and Ash planted at 60-90cm bare rooted sizes.

Existing Hedges / Hedge 3
 Eastern boundary of existing caravan park is defined by low mixed hedge planted on its eastern side. Hedge comprises of native species - Hawthorn, Blackthorn, Hazel, Willow and Alder - and is establishing well. This hedge will be retained, maintained and any gaps planted up with similar species. This hedge will contribute to the screening of the caravan park when viewed from the adjacent public footpath. Additional individual trees will be planted to provide further height and to break up the linear hedge - these to be Alder, Spycorn and Ash planted at 60-90cm bare rooted sizes.

Existing Hedges / Hedge 4
 Eastern and southern boundary of existing caravan park is defined by low mixed hedge planted on its northern side. Hedge comprises of native species - Hawthorn, Blackthorn, Hazel, Willow and Alder - and is establishing well. This hedge will be retained, maintained and any gaps planted up with similar species. This hedge will contribute to the screening of the caravan park when viewed from the south and from the adjacent public footpath. Additional individual trees will be planted to provide further height and to break up the linear hedge - these to be Alder, Spycorn and Ash planted at 60-90cm bare rooted sizes.

Existing Hedges / Hedge 5
 The southern boundary of the existing caravan park and tenting field, is defined by a high mixed covered well established grass - scrub along the top and southern side of the road. This hedge will be retained for the most part but cut back as necessary to allow a native hedge to be planted along the northern side of the road, within the existing road fence that separates the road from the caravan park/playing field. This hedge will consist of Hawthorn, Blackthorn, Hazel, Willow, Alder, Wild Rose and Hornbeam, supplied as 45-60 cm bare rooted plants except for the Hornbeam which will be supplied as a 2 litre container grown plant. Hedges will be planted in a double row with plants centered at 50cm within the row, with the row 400cm apart. Caravan Spacers per linear metre of hedge. This hedge will be supplemented with individual tree species planted at random within the hedge - these to be Alder, Spycorn and Ash planted at 60-90cm bare rooted sizes. This boundary treatment will provide an effective natural screening of the existing caravan park and the proposed Tenting Park when viewed from the south (Eith).

Proposed Internal Hedges
 The existing caravan park is to be further divided into smaller, more intimate structures - these will be defined by existing retained hedges and by the introduction of new hedges. These new hedges will be located off on both sides to offer protection to the plants as they establish. Hedges will comprise native species - Hawthorn, Blackthorn, Hazel, Willow, Alder, Wild Rose and Hornbeam, supplied as 45-60 cm bare rooted plants except for the Hornbeam which will be supplied as a 2 litre container grown plant. Hedges will be planted in a double row with plants centered at 50cm within the row, with the row 400cm apart. Caravan Spacers per linear metre of hedge. These hedges will be supplemented with individual tree species, planted at random within the hedge - these to be Alder, Spycorn, Ash, Birch and Mountain Ash planted at 60-90cm bare rooted sizes. These hedges will provide a screening of the natural layout of the caravan park and will contribute to the overall screening of this part of the caravan park from all directions.

Proposed Playing Field Hedges
 This hedge will partly enclose the playing field within the tenting field. The new hedge will be fenced off on both sides to offer protection to the plants as they establish. Hedge will comprise native species - Hawthorn, Blackthorn, Hazel, Willow, Alder, Wild Rose and Hornbeam, supplied as 45-60 cm bare rooted plants except for the Hornbeam which will be supplied as a 2 litre container grown plant. Hedges will be planted in a double row with plants centered at 50cm within the row, with the row 400cm apart. Caravan Spacers per linear metre of hedge. This hedge will be supplemented with individual tree species planted at random within the hedge - these to be Alder, Spycorn and Ash planted at 60-90cm bare rooted sizes.

Pobwlch a dymuniad masnachol graeth odd ar y dyfyniad hwn
 Do not scale from this drawing
 If in doubt - ask

Neidder - Amwddwr

Hwy dyfynid hwn yn lawdriniaeth Russell Hughes ac ni chyswnt ei gynnwys yn ei ddiwylliant hwn
 This drawing is the copyright of Russell Hughes and must not be copied or reproduced without permission

Cyflun - Job
CARAVAN PARK,
FFARM PORTHDINLLAEN
 Dyfynid - Drawing

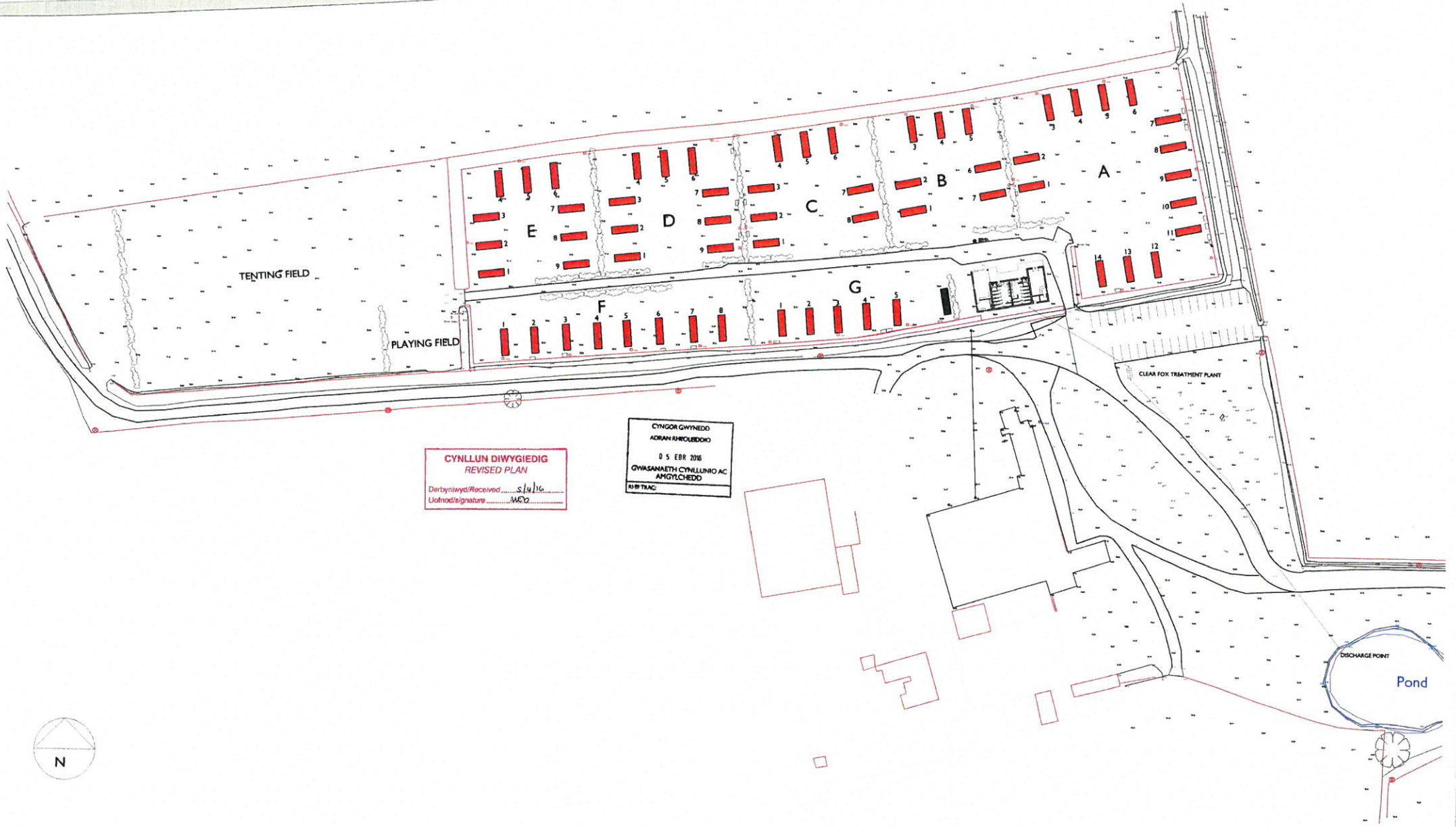
PROPOSED SITE PLAN - LANDSCAPING DETAILS

RH Dyfynid - Drawing No.
2304/15/3
 Gradd - Scale
1:500 @ A1
 Dyddiad - Date
May 2015

russell-hughes cyf
 pemsell/architects

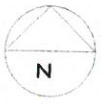
CYNGOR GWYNEDD
ADRAN RHEDIOLDD
 2 2 Eith J05
GWASANAETH CYNLLUNIO AC
IMDYLCHREDD

56 Bridge Street,
 Llangefni,
 Tynys Mon
 LL77 7FH
 Tel: 01248 722333
 Fax: 01248 750600
 E-mail: info@russellhughes.co.uk



CYNLLUN DIWYGIEDIG
REVISED PLAN
 Derbyniwyd/Received.....s.j.s.j.g.
 Llofnod/signature.....M.C.O.

CYNGOR GWYNEDD
 ADRIAN RHODEIDIO
 05 EBR 2016
 GWASANAETH CYNLLUNIO AC
 AMGYLCHEDD
 RIB/TIAC



Peidiwch â ddimyrd mesurwchdo graidd oddi ar y dyluniad hwn
 Do not scale from this drawing
 If in doubt - ask
 Nis gellir dibeddu hwn yn broffesiwn Pengetri Russell-Hughes ac ni
 channellir ei gynnwys mewn unrhyw bwrdd masnachol
 This drawing is the copyright of Russell-Hughes architects and
 must not be copied or reproduced without permission

Newsletters - Amendments

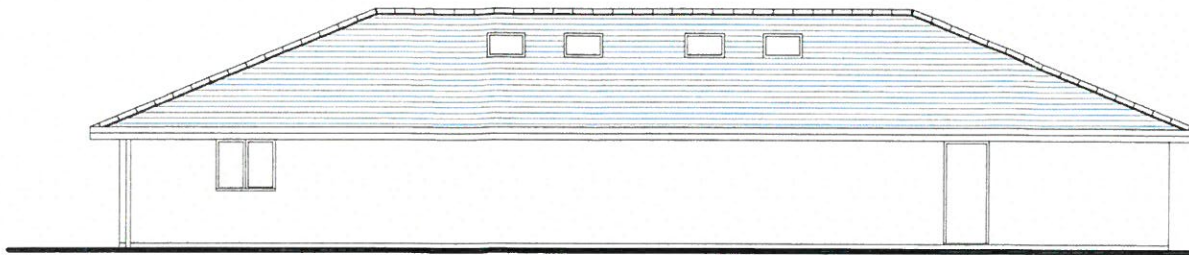
Cynllun - Job
CARAVAN PARK,
FFARM PORTHDINLLAEN
 Dyluniad - Drawing
PROPOSED SITE PLAN

RH Dyluniad - Drawing No
2304:15:3a
 Graddfa - Scale
1:500 @ A1
 Dyddiad - Date
APR 2016

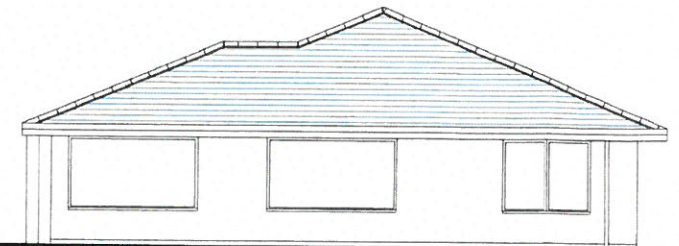
russell-hughes cyf
 penselri/architects

56 Bridge Street,
 Llangefni,
 Ynys Mon
 LL77 7HH

Tel: 01248 722333
 Fax: 01248 750600
 Email: info@russell-hughes.co.uk



REAR ELEVATION

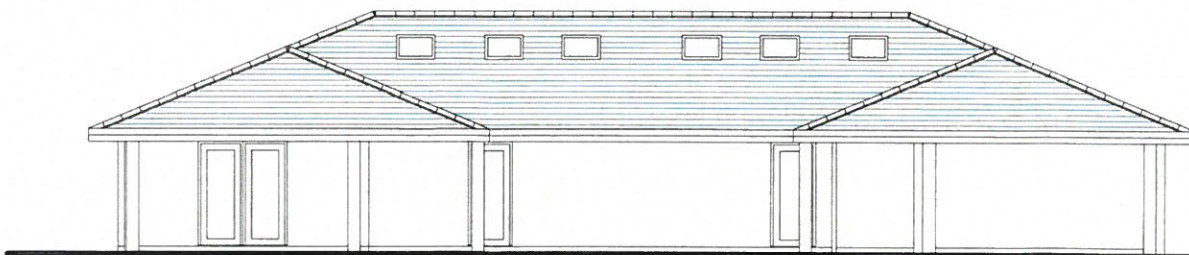


SIDE ELEVATION

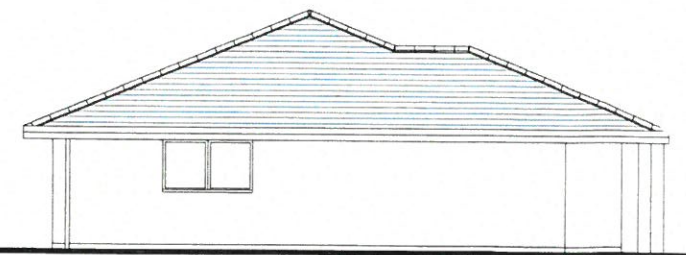
DISODLI CYNLLUN / PLAN SUPERSEDED
 Gweler Cynllun Diwygiedig / See Revised Plan
 Derbyniwyd / Received 17/5/16
 Llofnod / signature MED

CYNLLUN DIWYGIEDIG
 REVISED PLAN
 Derbyniwyd / Received 5/4/16
 Llofnod / signature MED

CYNGOR GWYNEDD
 ADRAN RHEOLEDDIO
 5 EBR 2016
 GWASANAETH CYNLLUNIO AC
 AMGYLCHEDD
 RHIF TRAC:



FRONT ELEVATION



SIDE ELEVATION

Peidiwch a chymryd mesuridau graddfa oddi ar y dyluniad hwn
 Os yn amau - gofynnwch
 Do not scale from this drawing
 If in doubt - ask

Newiduriau - Amendments

Mae'r dyluniad hwn yn hawlfraint Penseiri Russell-Hughes ac ni
 chaniateir ei gopïo neu ei sigynhychu heb gantardd
 This drawing is the copyright of Russell-Hughes architects and
 must not be copied or reproduced without permission

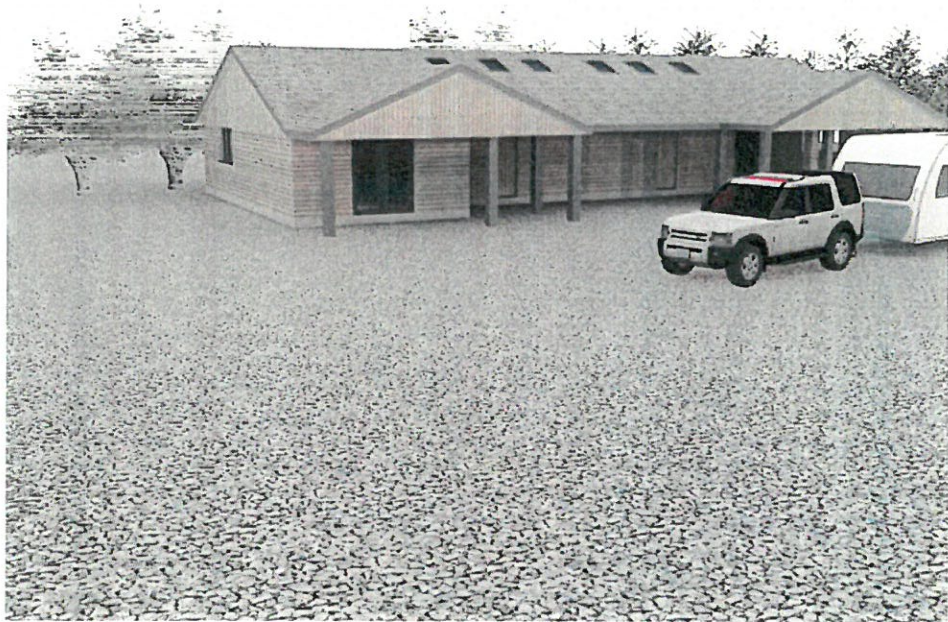
Cynllun - Job
**FFERM PORTHDINLLAEN,
 CARAVAN PARK**
 Dyluniad - Drawing
PROPOSED ELEVATIONS

Rhif Dyluniad - Drawing No
2304:15:8
 Graddfa - Scale
1:100 @ A3
 Dyddiad - Date
July 2015

russell-hughes cyf
 penseiri/architects

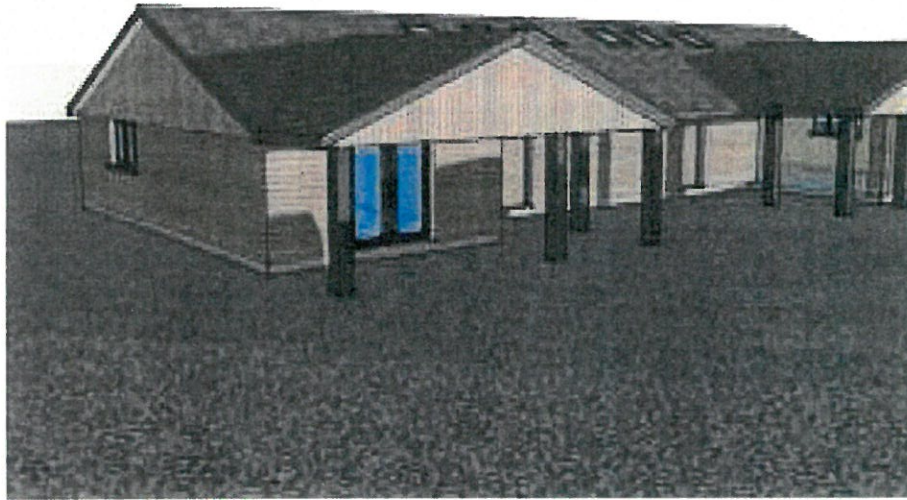
56 Bridge Street,
 Llangefnï,
 Ynys Mon
 LL77 7HH

Tel: 01248 722333
 Fax: 01248 750600
 E-mail: info@russellhughes.co.uk



CYNLLUN DIWYGIEDIG
REVISED PLAN
Derbyniwyd/Received: 17/5/16
Llofnod/signature: MED





CYNLLUN DIWYGIELLUS
REVISED PLAN
Derbyniwyd/Revised 5/5/16.....
Llofnod/signature WED

