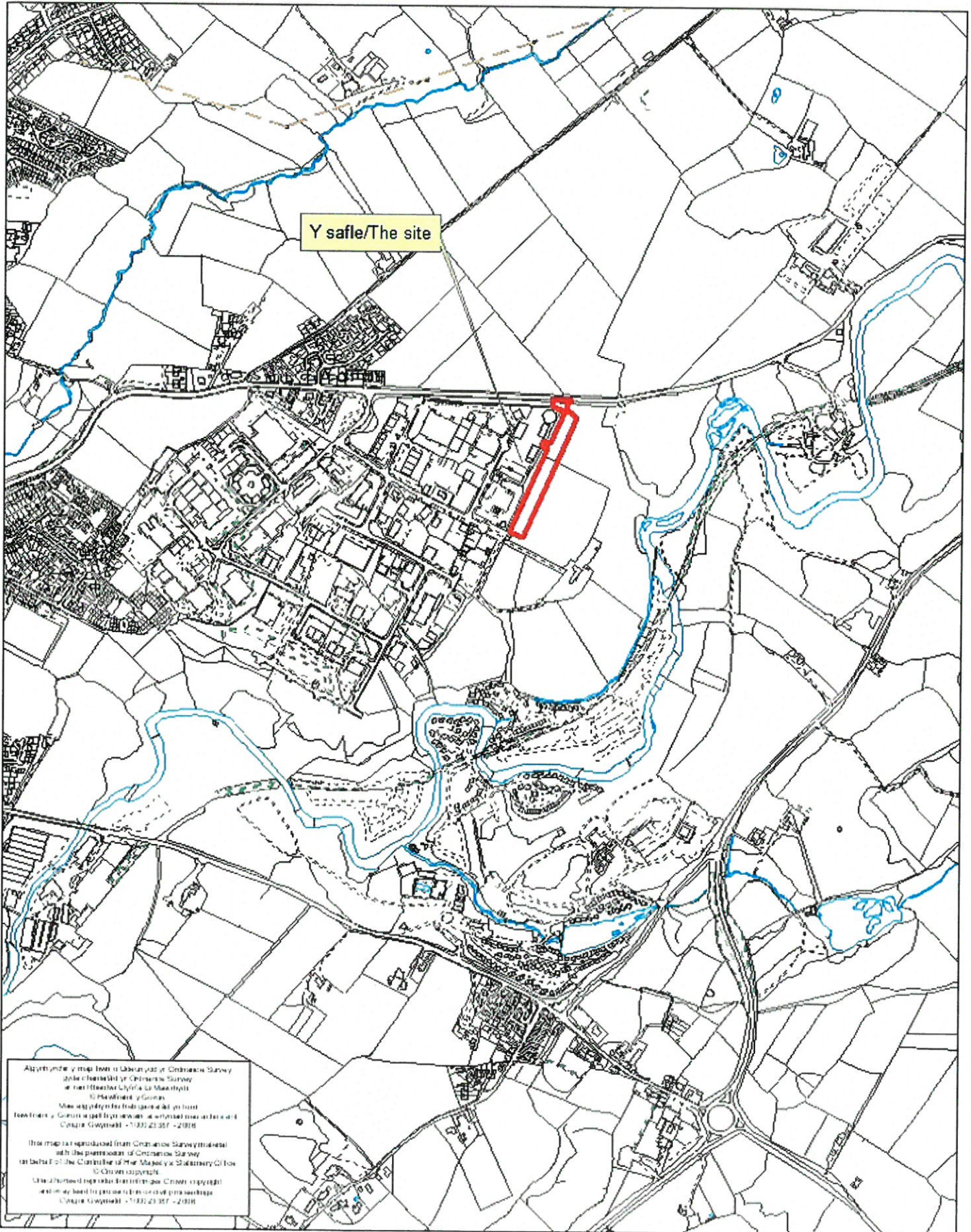
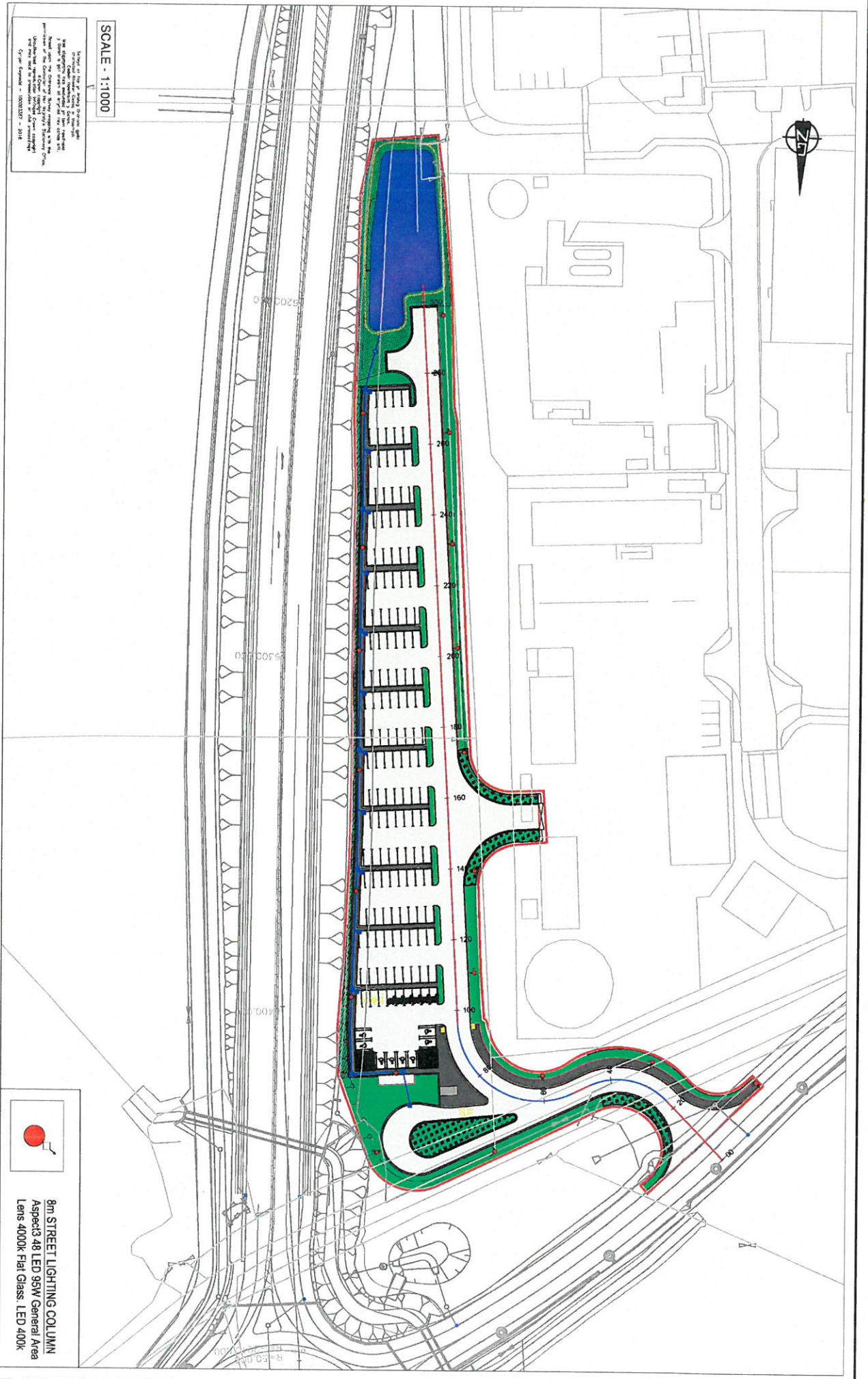




Rhif y Cais / Application Number : C18/0744/23/R3

Cynllun lleoliad ar gyfer adnabod y safle yn unig. Dim i raddfa.
Location Plan for identification purposes only. Not to scale.





In Ffwrdd o'r 27 Ionawr 2018
 Mae'r Llywodraeth yn cytuno i
 2. Pwrdd o'r 27 Ionawr 2018
 3. Pwrdd o'r 27 Ionawr 2018
 4. Pwrdd o'r 27 Ionawr 2018
 5. Pwrdd o'r 27 Ionawr 2018
 6. Pwrdd o'r 27 Ionawr 2018
 7. Pwrdd o'r 27 Ionawr 2018
 8. Pwrdd o'r 27 Ionawr 2018
 9. Pwrdd o'r 27 Ionawr 2018
 10. Pwrdd o'r 27 Ionawr 2018
 11. Pwrdd o'r 27 Ionawr 2018
 12. Pwrdd o'r 27 Ionawr 2018
 13. Pwrdd o'r 27 Ionawr 2018
 14. Pwrdd o'r 27 Ionawr 2018
 15. Pwrdd o'r 27 Ionawr 2018
 16. Pwrdd o'r 27 Ionawr 2018
 17. Pwrdd o'r 27 Ionawr 2018
 18. Pwrdd o'r 27 Ionawr 2018
 19. Pwrdd o'r 27 Ionawr 2018
 20. Pwrdd o'r 27 Ionawr 2018

SCALE - 1:1000

CYNLLUN / SCHEME :

PARCIO A RHANNU / PARK AND SHARE
 CIBYRN

TITL LUNIAID / DRAWING TITLE :

CYNLLUN GOLEADAU STRYD /
 STREET LIGHTING DRAWING

| | | | |
|-----------------|-----|---------------------|------------|
| DAIUNWYTO GAN : | DFR | DTODDAD DAIUNWYTO : | 17/08/2018 |
| GWIRWYTO GAN : | WTL | DTODDAD GWIRWYTO : | 17/08/2018 |
| CHEKED BY : | | DATE CHECKED : | |
| Tafel | 1 | o | 1 |
| Sheet | | of | |
| | | SCALES : | 1:1000@A3 |
| | | | NEW |

Rhif Luniaid
 Drawing No. 6350/SU/101

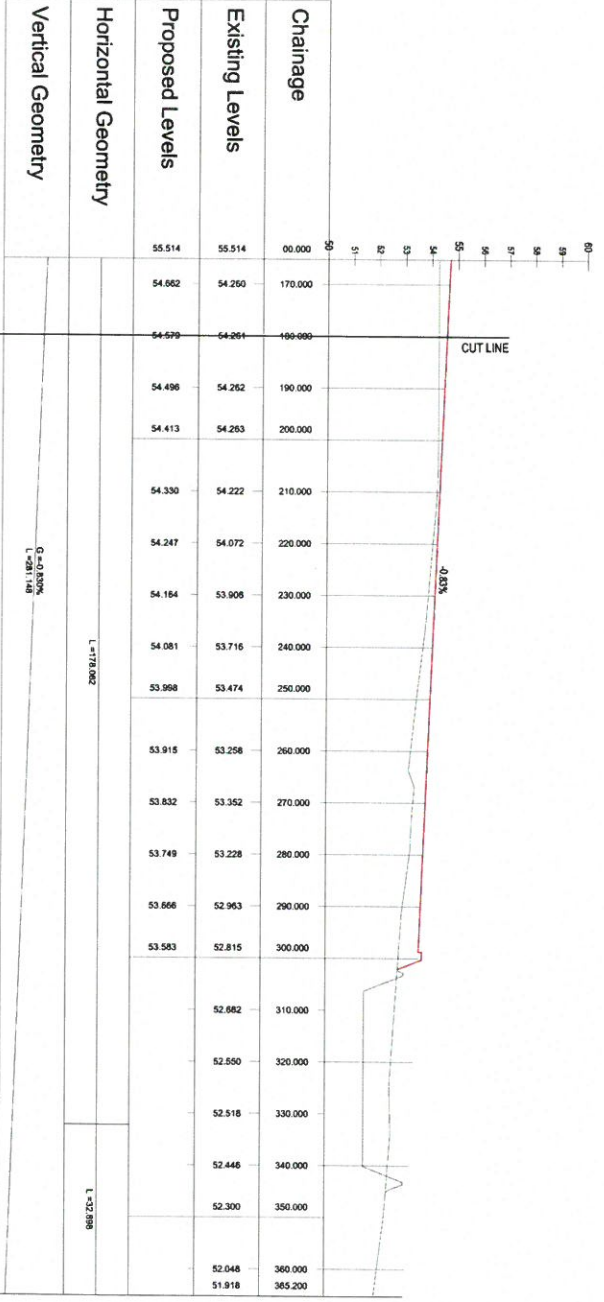
8m STREET LIGHTING COLUMN
 Aspect: 3.48 LED 95W General Area
 Lens 4000K Flat Glass LED 400K

CLIENT:



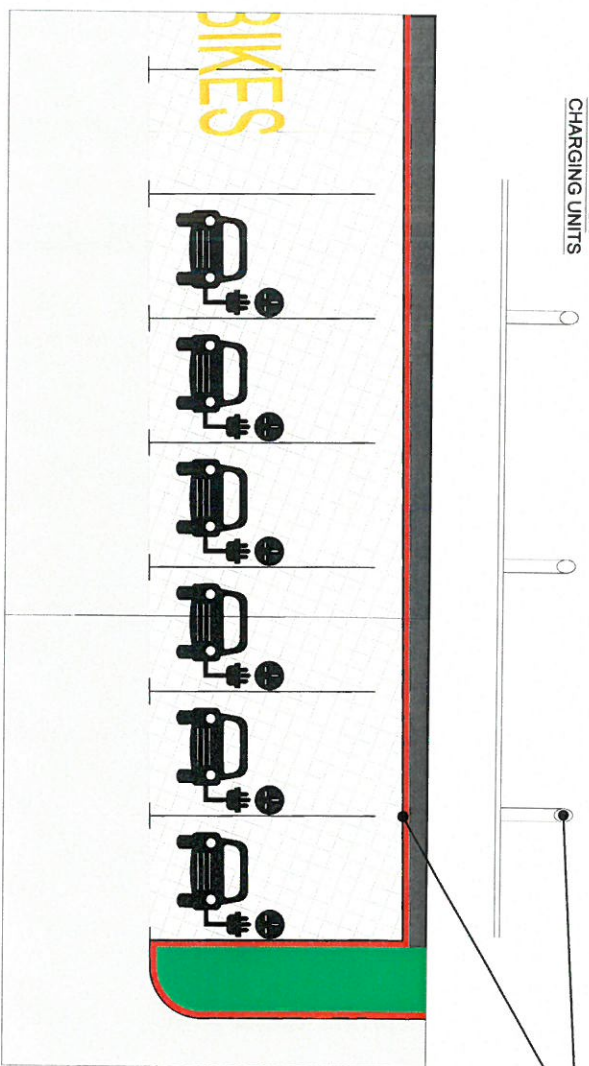
NOTES

1. ALL DIMENSIONS SHALL BE IN METERS UNLESS OTHERWISE SPECIFIED.
2. ALL LEVELS SHALL BE IN METERS UNLESS OTHERWISE SPECIFIED.
3. HOLD DIMENSIONS UNLESS OTHERWISE SPECIFIED.



| | | | |
|--|---|---|---|
| | | | |
| <p>CLIENT / SCHEME:</p> <p>PARCIA RHANNU / PARK AND SHARE</p> <p>CIBVN</p> | | | |
| <p>TITLE / DRAWING / DRAWING TITLE:</p> <p>DARLUN CYCLING / PLANNING DRAWING</p> <p>HIR TORIAD / LONGSECTION</p> | | | |
| <p>DATE: 03/08/2018</p> <p>DESIGNED BY: WTL</p> <p>CHECKED BY: 2 5</p> <p>DATE CHECKED: 03/08/2018</p> <p>SCALE: AS SHOWN</p> | <p>PROJECT NO: 6350/GA/102</p> <p>DRAWING NO: 6350/GA/102</p> | <p>DATE: 03/08/2018</p> <p>DESIGNED BY: WTL</p> <p>CHECKED BY: 2 5</p> <p>DATE CHECKED: 03/08/2018</p> <p>SCALE: AS SHOWN</p> | <p>PROJECT NO: 6350/GA/102</p> <p>DRAWING NO: 6350/GA/102</p> |

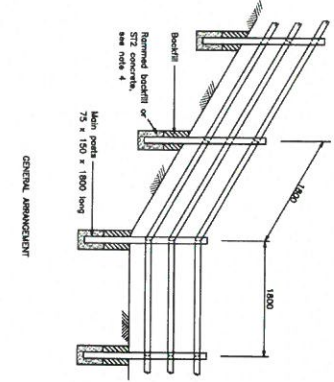
UNEDAU PWER CHARGING UNITS



CYCLEUSTERAU ALI BWERU MODUR TRYDANODI
ELECTRIC CAR CHARGING FACILITIES

| Charging Unit Model | 1 x 45V Single Phase | 2 x 45V Single Phase | 11kV Three Phase | 23kV Three Phase |
|----------------------------|---|---|--|--|
| AC Charging Output | 2 x 3.6kW (2 x 16A) @ 230V | 2 x 7.2kW (2 x 32A) @ 230V | 2 x 11kW (2 x 16A/32A) @ 400V between phases 2.0kW per phase (5000VA) @ 230V | 2 x 22kW (2 x 32A/63A) @ 400V between phases 2.0kW per phase (5000VA) @ 230V |
| Input Voltage | 230V AC | 230V AC | 400V AC between Phases | 60A per phase 400V AC between Phases |
| Input Current | 63A | 63A | Soft Load configuration with separate connections for 5 x 25A per phase | Soft Load configuration with separate connections for 5 x 25A per phase |
| Over Current Protection | 2 x 60A MCBs Curve D | 2 x 100A MCBs Curve D | 2 x 30mA Type A RCDs | 2 x 30mA Type A RCDs |
| Outlet Protection (RCD) | 2 x Type 2 (BNC2) 16A | 2 x 30mA Type A RCDs | IP54 (EN60529 1992 + A23013) | IP54 (EN60529 1992 + A23013) |
| Safety Protection (RCD) | 2 x 30mA Type A RCDs | IP54 (EN60529 1992 + A23013) | ISO / IEC 14434 | ISO / IEC 14434 |
| Environmental Protection | IP54 (EN60529 1992 + A23013) | IP54 (EN60529 1992 + A23013) | Mod. 3: SELV/PE & RMA control signaling conforming to IEC/EN 61851-1 Annex B, validated by Mercedes, BMW, Nissan, Renault, Mitsubishi, Honda, VW, Volvo, Sprint, Lotus, Vaux | Mod. 3: SELV/PE & RMA control signaling conforming to IEC/EN 61851-1 Annex B, validated by Mercedes, BMW, Nissan, Renault, Mitsubishi, Honda, VW, Volvo, Sprint, Lotus, Vaux |
| RFID Access Tag Standard | Control | Control | CGPS Cellular Data Network Radio Equipment Directive | CGPS Cellular Data Network Radio Equipment Directive |
| Control | Control | Control | Ethernet connection (replacing wireless) available at no extra cost. Please specify at time of ordering | Ethernet connection (replacing wireless) available at no extra cost. Please specify at time of ordering |
| Wireless Communications | Ethernet Communications | Ethernet Communications | TC-PIF 2 way communication with secure central server | TC-PIF 2 way communication with secure central server |
| Ethernet Communications | Network Communications | Network Communications | Network Security | Network Security |
| Network Communications | Network Security | Network Security | HTTP 128 bit encryption | HTTP 128 bit encryption |
| Network Security | Main Operating Temperature | Main Operating Temperature | -20°C to +55°C (LCD Display remains fully operational at -20°C but may have a slower response below 0°C) | -20°C to +55°C (LCD Display remains fully operational at -20°C but may have a slower response below 0°C) |
| Main Operating Temperature | Operating Humidity | Operating Humidity | To 95% RH Non-condensing | To 95% RH Non-condensing |
| Operating Humidity | EMC Compliance | EMC Compliance | EN 61000-6-3:2007, EN 61000-6-2:2005 | EN 61000-6-3:2007, EN 61000-6-2:2005 |
| EMC Compliance | Safety Compliance | Safety Compliance | Low Voltage Directive (LVD) 2006/95/EC, EN 60950-1:2006 + A12, EN 60950-2:2006 | Low Voltage Directive (LVD) 2006/95/EC, EN 60950-1:2006 + A12, EN 60950-2:2006 |
| Safety Compliance | EV Charging Compliance | EV Charging Compliance | EN 61851-1:2001, EN 61851-2:2002, EN 61851-3:2002, IEC 62196-1 | EN 61851-1:2001, EN 61851-2:2002, EN 61851-3:2002, IEC 62196-1 |
| EV Charging Compliance | ZE READY | ZE READY | ZE 1,2 ready, which must be specified at time of ordering | ZE 1,2 ready, which must be specified at time of ordering |
| ZE READY | OCPP | OCPP | OCPP 1.5 compliant where option requested | OCPP 1.5 compliant where option requested |
| OCPP | Pay As You Go Service | Pay As You Go Service | See the additional service description document | See the additional service description document |
| Pay As You Go Service | Warranty | Warranty | Comprehensive three years parts and labour warranty included as standard | Comprehensive three years parts and labour warranty included as standard |
| Warranty | Dimensions (H x W x D) | Dimensions (H x W x D) | 1400mm by 360mm by 250mm | 1400mm by 360mm by 250mm |
| Colour Options | White (RAL3010) as standard. Black (RAL3005) available at no extra cost | White (RAL3010) as standard. Black (RAL3005) available at no extra cost | | |

MANYLION FFENS FENCE DETAILS



- NOTES**
1. BS 4132 Part 7 applies unless otherwise stated
 2. Where plain or lacured posts are used, the posts should be protected by a 10mm thick layer of 1/2" ball bed stone, covered and
 3. comply with BS 4102
 4. Boundary between the highway and private property, the fence should be erected on the private property side, unless otherwise stated
 5. Posts may be supported by normal bedrock or ST2 concrete
 6. All dimensions are in MILLIMETRES.

| DRAWING NO. | ACCOMMODATION WORKS | | | |
|-------------|-------------------------------|---------|--|--|
| | WOODEN POST AND 3 RAIL FENCES | | | |
| H15 | D | 14th 04 | | |
| | B | 14th 04 | | |
| | A | 14th 04 | | |
| | REV | 14th 04 | | |

MANYLION LLOCHES BWS BUS SHELTER DETAILS



- Loches Bws / Bus Shelter**
- Maint / Shelter size - 3.120m long x 1.630m deep
 - Maint to / Roof Size - 3.600m long x 2.000m deep
 - A 30 degree, pitched roof shelter, with gabled ends, the underside of the roof is an open void. The roof substrate is 40mm thick and is covered in Cedar shingles. The single opening shown is 1.350mm wide
 - The openings can be on any side (or end) giving a single point of access. Alternatively several access points can be created (at any point) by cutting the horizontal rails and glazing. A bench seat runs the full length of the rear wall, it could be put in any position. Any area of glazing can be swapped for solid boarding and vice versa.

MANYLION LLOCHES BEIC CYCLE SHELTER DETAILS



- Loches Beic / Cycle Shelter**
- Maint / Shelter / Standard Unit Size:
 - Length: 4100mm
 - Width: 2140mm
 - Height: 2150mm
 - Galvanneal / Capesails: 4100mm - 10 Cycles
 - **Noted / Features:**
 - Robust modular construction featuring load bearing pultrus welded End Frames and Pullin Sleds made from Heavy-Duty Box section assembled with Anti-Tamper High Strength Bolts
 - Anti-Climb End Frames
 - Adjustable Staps
 - Hot dipped galvanneal to BS EN ISO 1461:2009
 - 4mm ClearView PETa UV roof cladding (5mm also available)



NOTIADAUNOTES

1. All dimensions are in millimeters unless otherwise stated.
2. FOR LEFT HAND DRIVE (LHD) OR RIGHT HAND DRIVE (RHD) ALL DIMENSIONS ARE IN METERS
3. ALL DIMENSIONS ARE IN METERS

YGC

CLIENT / CORP: PAROIA A RHANNU / PARK AND SHAPE CIBNY

TITLE / LIAISON / DRAWING TITLE: DARLUN CYMUNIO / PLANNING DRAWING TERNANT GYFREDINOL / GENERAL ARRANGEMENT

| | | | |
|------------|--------------------|-----|---------|
| DATE | DESCRIPTION | BY | CHECKED |
| 13.08.2018 | DESIGN DEVELOPMENT | WFL | WFL |
| 13.08.2018 | DESIGN DEVELOPMENT | WFL | WFL |
| 13.08.2018 | DESIGN DEVELOPMENT | WFL | WFL |
| 13.08.2018 | DESIGN DEVELOPMENT | WFL | WFL |

DRAWING NO. 6350/GA/105