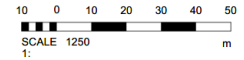


DAY Architectural Ltd does not warrant or take responsibility for any costs, losses or claims whatsoever arising from these drawings, specifications and related documents unless there is full compliance by the intended recipient or user with the following:

- All boundaries, dimensions and levels are to be checked on site before construction and any discrepancies reported to the Architect / Designer prior to commencement of any works.
- Partial Service: Any discrepancies with site or other information is to be advised to the Architect / Designer and direction and / or approval is to be sought before the implementation of the detail.
- Block and site plans are reproduced under license from the Ordnance Survey.
- For the purpose of coordination, all relevant parties must check this information prior to implementation and report any discrepancies to the Architect / Designer. The information must solely and only be used for the coordination and/or construction of the current project.
- The copyright of the original documents belongs to DAY Architectural Limited. The information is only for use in preparation of documents for this project. The information issued may be confidential and must not be used other than by the intended recipient.
- The recipient is responsible for verifying the correctness and completeness of the information issued. This should be done by consulting all relevant associated documents including but not limited to information provided by the Civil / Structural Engineer, MEP Engineer(s), Fire Engineer, Acoustician, Highways Consultant, Flood Risk Assessor, Party Wall Assessor and any other project designers / consultants supplied during the course of the project and by confirming dimensions on site.
- It is the responsibility of the recipient to ensure they have the most up to date information.
- If altered or added to in any way, all references to DAY Architectural Limited must be removed and those making the changes assume total responsibility for the information thereon.
- The Architect does not warrant that planning permission, Building Control/Building Safety Regulator Approval and other approvals from third parties shall be granted at all or, if granted, will be granted in accordance with any anticipated timescale. All designs provided are subject to such approval.
- Any facade/cladding design provided by DAY Architectural Limited is in relation to indicative design intent only and DAY Architectural Limited shall have no contractual or insurance liability for such design however provided.
- This drawing must not be used for 'tender' or 'construction' purposes unless noted otherwise.
- Do not scale off drawings. Any measurements taken from information which is not dimensioned on the electronic copy are at the risk of the recipient.



**SITE LOCATION PLAN KEY**

- Land Ownership Boundary
- Proposed Site Boundary

Area: 2.39a / 0.97ha



P03 Planning Issue	19.09.25	DH	CG
P02 Issued for Planning	29.08.25	GS	CG
P01 Draft Planning Issue	06.08.25	GS	CG
REV DESCRIPTION	DATE	BY	CHK

CLIENT  
**Bangor University**

CONTRACTOR

DAY Architectural Ltd  
Lancaster Buildings | 77 Deansgate  
Manchester | M3 2BW  
T: 0161 834 9703 | W: www.day-architectural.com

PROJECT  
**New Business School, Bangor University**

DRAWING	SCALE
Site Location Plan - Red Line Boundary	As indicated @ A3

PROJ REF	DAY REF	DRAWN BY	FIRST ISSUED			
	1496-23	DH	29.05.25			
ORI	VOL	LEV	TYP	ROL	NUM	REV
DAY	V1	XX	DR	A	02-9001	P03
SUITABILITY	DRAWING STATUS					
S2	PLANNING					

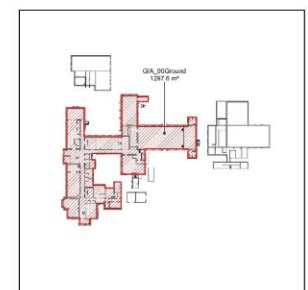
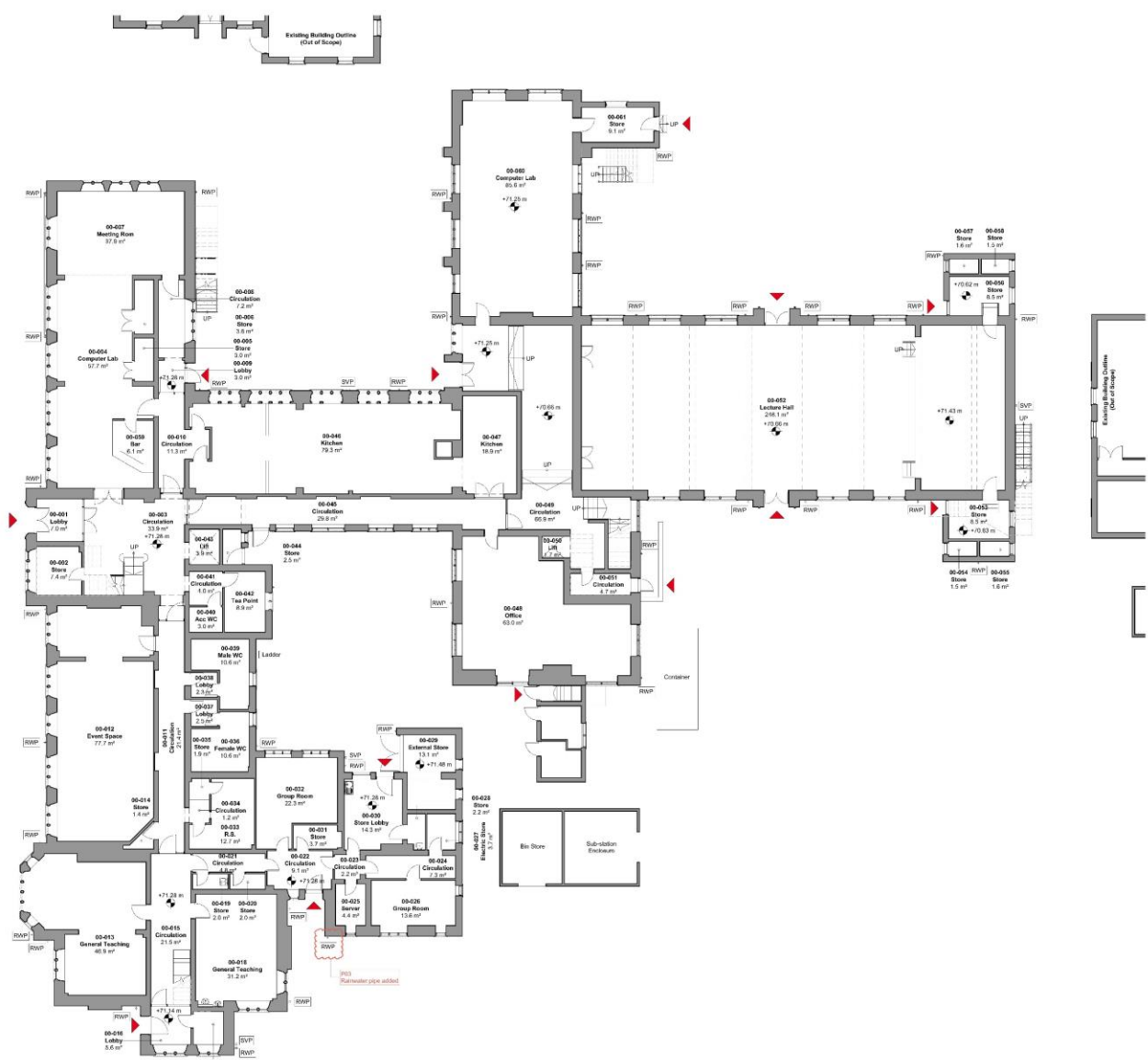
Information contained on this drawing is the sole copyright of DAY Architectural Ltd, and is not to be reproduced without their permission.

Notes:  
 1. All dimensions are in meters.  
 2. All areas are in square meters.  
 3. All elevations are in meters above sea level.  
 4. All rooms are numbered according to the room schedule.  
 5. All rooms are named according to the room schedule.  
 6. All rooms are sized according to the room schedule.  
 7. All rooms are located according to the room schedule.  
 8. All rooms are oriented according to the room schedule.  
 9. All rooms are finished according to the room schedule.  
 10. All rooms are equipped according to the room schedule.



Room Schedule\_Existing\_00Ground

Number	Name	Area
00Ground		
00-001	Lobby	7.0 m²
00-002	Store	7.4 m²
00-003	Circulation	33.9 m²
00-004	Computer Lab	57.7 m²
00-006	Store	3.0 m²
00-008	Store	3.0 m²
00-007	Meeting Room	37.8 m²
00-008	Lobby	3.0 m²
00-010	Circulation	7.2 m²
00-011	Circulation	77.7 m²
00-013	Event Space	46.8 m²
00-014	Store	1.4 m²
00-018	Circulation	21.5 m²
00-016	Lobby	5.0 m²
00-017	Aux WC	3.0 m²
00-018	General Teaching	31.2 m²
00-019	Store	2.0 m²
00-020	Store	2.0 m²
00-021	Circulation	4.8 m²
00-022	Circulation	9.1 m²
00-023	Circulation	2.2 m²
00-024	Circulation	7.3 m²
00-025	Server	4.4 m²
00-026	Group Room	13.6 m²
00-027	Electrical Store	3.7 m²
00-028	Store	2.2 m²
00-028	External Store	13.1 m²
00-030	Store Lobby	14.3 m²
00-031	Store	3.7 m²
00-032	Group Room	23.3 m²
00-033	R.S.	12.7 m²
00-034	Circulation	1.8 m²
00-035	Store	1.8 m²
00-036	Female WC	10.6 m²
00-037	Lobby	2.3 m²
00-038	Lobby	2.3 m²
00-039	Main WC	10.0 m²
00-040	Aux WC	3.0 m²
00-041	Circulation	4.0 m²
00-042	Tap Point	6.9 m²
00-043	LRI	3.9 m²
00-044	Store	2.3 m²
00-046	Circulation	29.8 m²
00-046	Kitchen	79.3 m²
00-047	Kitchen	18.9 m²
00-048	Office	69.2 m²
00-049	Circulation	66.9 m²
00-050	LRI	1.2 m²
00-051	Circulation	4.7 m²
00-052	Lecture Hall	246.1 m²
00-053	Store	8.5 m²
00-054	Store	1.6 m²
00-055	Store	1.6 m²
00-056	Store	8.5 m²
00-057	Store	1.4 m²
00-058	Store	1.5 m²
00-059	Bar	6.1 m²
00-060	Computer Lab	60.4 m²
00-061	Store	9.1 m²
00-061	Store	138.5 m²



01 GA\_Plan\_Existing\_00Ground  
Scale: 1:125

AGB LMA 02 00 DR A  
**2000 P03**  
 (EXISTING BUILDING)  
 GA\_Plan\_Existing\_00Ground  
 New Business School  
 Ranger University, Philadelphia  
 Road, Benger LMA 02 00  
 Status: D21 Tender  
 Project Number: 2330

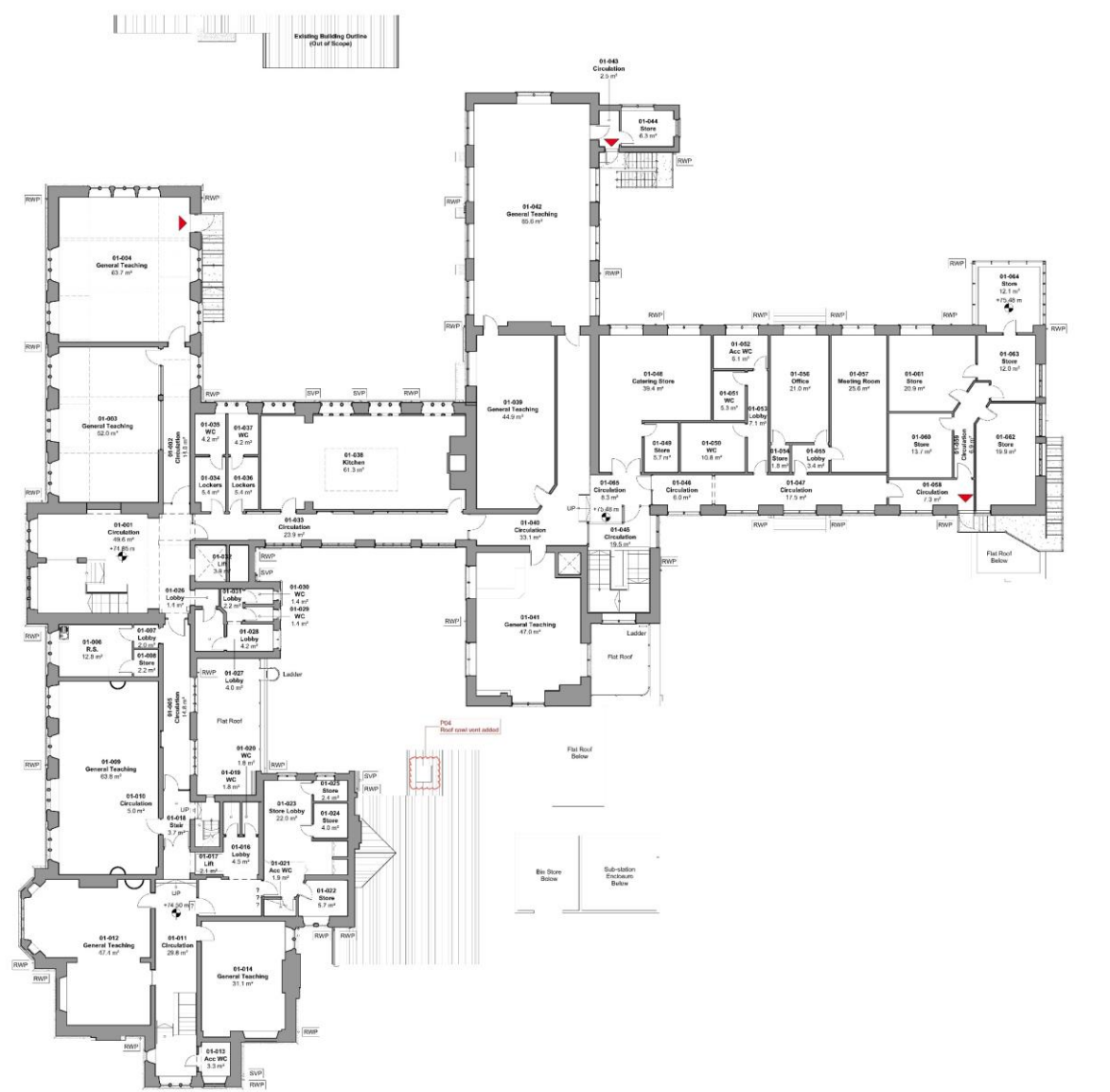


Notes:  
 1. All dimensions are in meters.  
 2. All areas are in square meters.  
 3. All rooms are numbered according to the room schedule.  
 4. All rooms are shown in their existing condition.  
 5. All rooms are shown in their proposed condition.

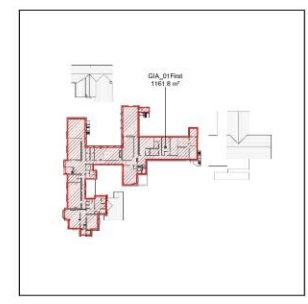


Room Schedule\_Existing\_01First

Number	Name	Area
01First		
01-001	Circulation	49.6 m²
01-002	Circulation	14.2 m²
01-003	General Teaching	32.0 m²
01-004	General Teaching	63.7 m²
01-006	Circulation	11.8 m²
01-008	R.S.	13.3 m²
01-007	Lobby	2.0 m²
01-008	Store	2.2 m²
01-008	General Teaching	63.8 m²
01-010	Circulation	5.0 m²
01-011	Circulation	29.8 m²
01-012	General Teaching	47.4 m²
01-013	Acc W/C	3.3 m²
01-014	General Teaching	31.1 m²
01-015	Circulation	7.7 m²
01-016	Lobby	4.5 m²
01-017	LR	2.3 m²
01-018	Stair	3.7 m²
01-019	WC	1.8 m²
01-020	WC	1.8 m²
01-021	Acc W/C	1.9 m²
01-022	Store	5.7 m²
01-023	Store Lobby	22.0 m²
01-024	Store	4.0 m²
01-025	Store	2.4 m²
01-026	Lobby	1.4 m²
01-027	Lobby	4.0 m²
01-028	Lobby	4.2 m²
01-029	WC	1.4 m²
01-030	WC	2.3 m²
01-031	Lobby	1.1 m²
01-032	LR	3.8 m²
01-033	Circulation	23.8 m²
01-034	Lockers	5.1 m²
01-035	WC	4.2 m²
01-036	Lockers	5.1 m²
01-037	WC	4.2 m²
01-038	Kitchen	61.3 m²
01-038	General Teaching	44.9 m²
01-040	Circulation	33.1 m²
01-041	General Teaching	47.0 m²
01-042	General Teaching	65.8 m²
01-043	Circulation	2.9 m²
01-044	Store	6.2 m²
44		79.6 m²
01First_01		
01-045	Circulation	19.9 m²
01-046	Circulation	5.0 m²
01-047	Circulation	17.2 m²
01-048	Coloring Store	36.4 m²
01-049	Store	5.7 m²
01-050	WC	10.8 m²
01-051	WC	9.9 m²
01-052	Acc W/C	6.1 m²
01-053	Lobby	7.1 m²
01-054	Stair	1.8 m²
01-055	Lobby	3.1 m²
01-056	Office	21.1 m²
01-057	Meeting Room	25.6 m²
01-058	Circulation	7.3 m²
01-059	Circulation	19.9 m²
01-060	Stair	13.7 m²
01-061	Stair	20.8 m²
01-062	Stair	18.9 m²
01-063	Stair	12.2 m²
01-064	Stair	12.1 m²
01-065	Circulation	8.3 m²
Total NA @		270.4 m²
		1,052.0 m²



Existing Building Outline (Not at Scale)



01 GA\_Plan\_Existing\_01First  
Scale: 1:125

AGB LMA 02 01 DR A  
**2001 P04**  
 (EXISTING BUILDING)  
 GA\_Plan\_Existing\_01First

New Business School  
 Ranger University, Philadelphia  
 Road, Benger LMA 02 P04  
 Status: D2 / For Tender  
 Project Number: 2330



**Notes:**

1. All dimensions are in millimeters unless otherwise stated.
2. All areas are in square meters unless otherwise stated.
3. All areas are rounded to the nearest square meter.
4. All areas are based on the finished floor level.
5. All areas are based on the external dimensions of the building.
6. All areas are based on the internal dimensions of the building.
7. All areas are based on the net area of the building.
8. All areas are based on the gross area of the building.
9. All areas are based on the total area of the building.
10. All areas are based on the total area of the building.



Room Schedule_Existing_02Second		
Number	Name	Area
02-001	Circulation	15.0 m <sup>2</sup>
02-002	Circulation	4.1 m <sup>2</sup>
02-003	Store	19.0 m <sup>2</sup>
02-004	Store	9.4 m <sup>2</sup>
02-005	Store	30.3 m <sup>2</sup>
02-006	Store	33.8 m <sup>2</sup>
<b>Total NA-6</b>		<b>112.8 m<sup>2</sup></b>

GA\_02Second  
114.8 m<sup>2</sup>

GA\_02Second  
114.8 m<sup>2</sup>

GA\_02Second  
114.8 m<sup>2</sup>

GA\_02Second  
114.8 m<sup>2</sup>

GA\_02Second  
114.8 m<sup>2</sup>

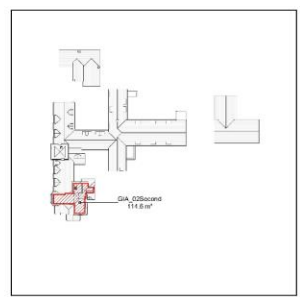
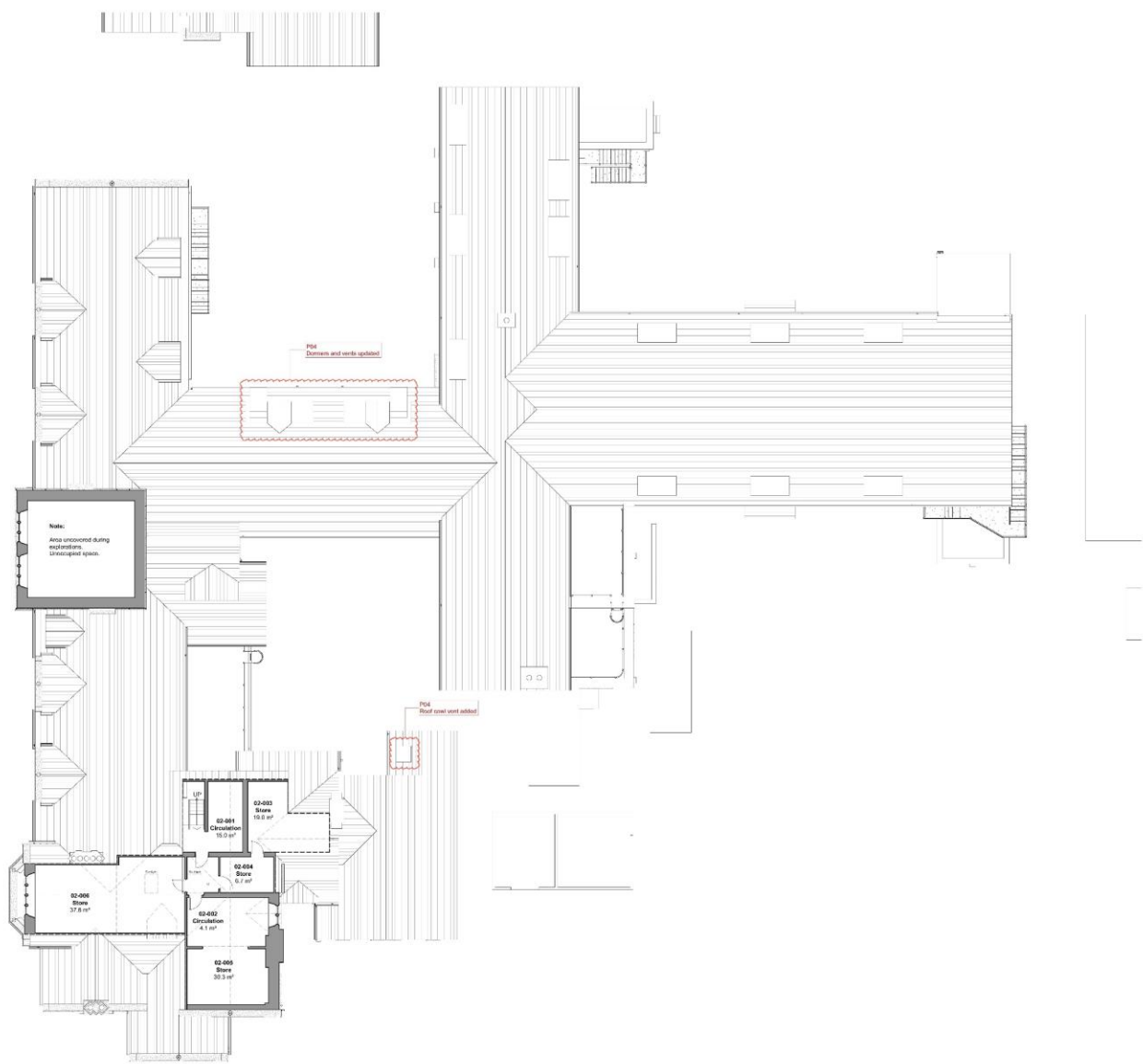
GA\_02Second  
114.8 m<sup>2</sup>

GA\_02Second  
114.8 m<sup>2</sup>

GA\_02Second  
114.8 m<sup>2</sup>

GA\_02Second  
114.8 m<sup>2</sup>

GA\_02Second  
114.8 m<sup>2</sup>



01 GA\_Plan\_Existing\_02Second  
Scale: 1:125

ADD LMA 02 02 DR A  
**2002 P04**  
[EXISTING BUILDING]  
GA\_Plan\_Existing\_02Second

New Business School  
Ranger University, Philadelphia  
Road, George L13 2TA  
Status: D2 / For Tender  
Project Number: 2330

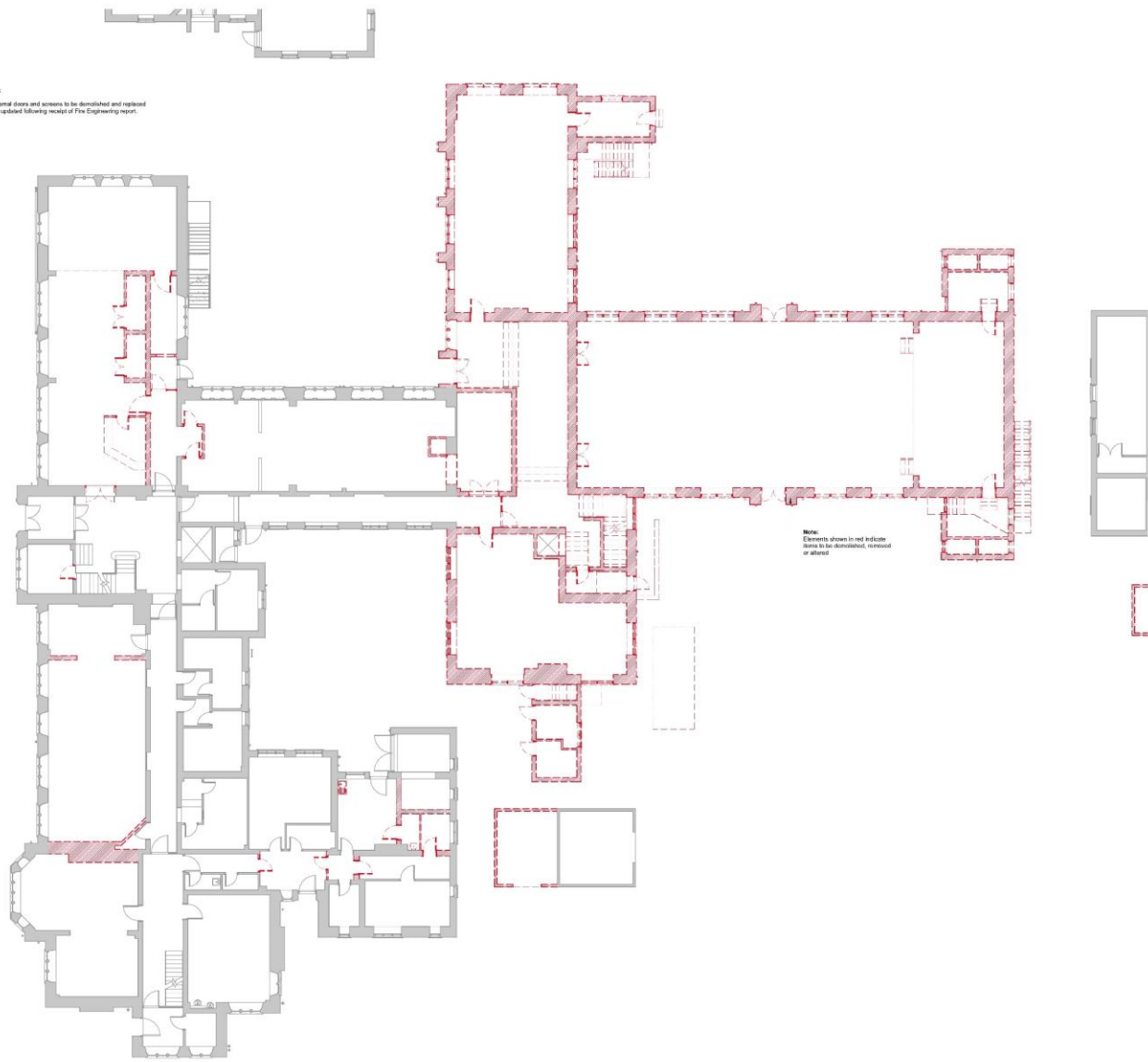
**LM** LEVELLOCK MODEL  
LEVELLOCK  
LEVELLOCK

3 Searley Street, Chester CH1 3LS  
01244 404021  
www.levellockmodel.com

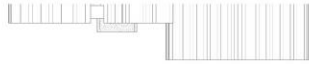




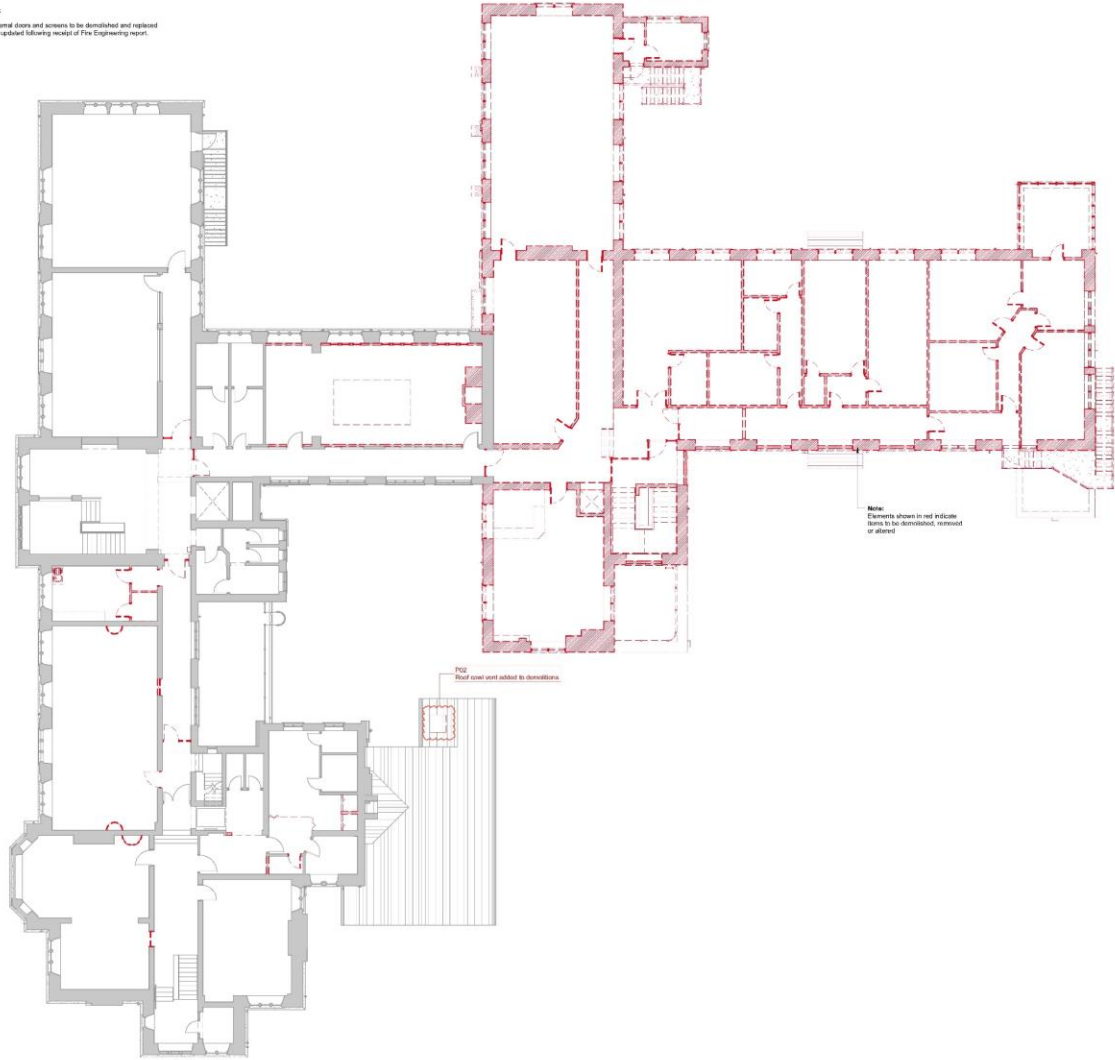
**Important Note:**  
Full extent of internal doors and screens to be demolished and replaced unknown. To be updated following receipt of Fire Engineering report.



**Note:**  
Elements shown in red indicate items to be demolished, removed or altered



**Important Note:**  
Full extent of internal doors and screens to be demolished and replaced unknown. To be updated following receipt of Fire Engineering report.



Note:  
Elements shown in red indicate items to be demolished, removed or altered

102  
Roof cover over added to demolition



1:25 @ A1

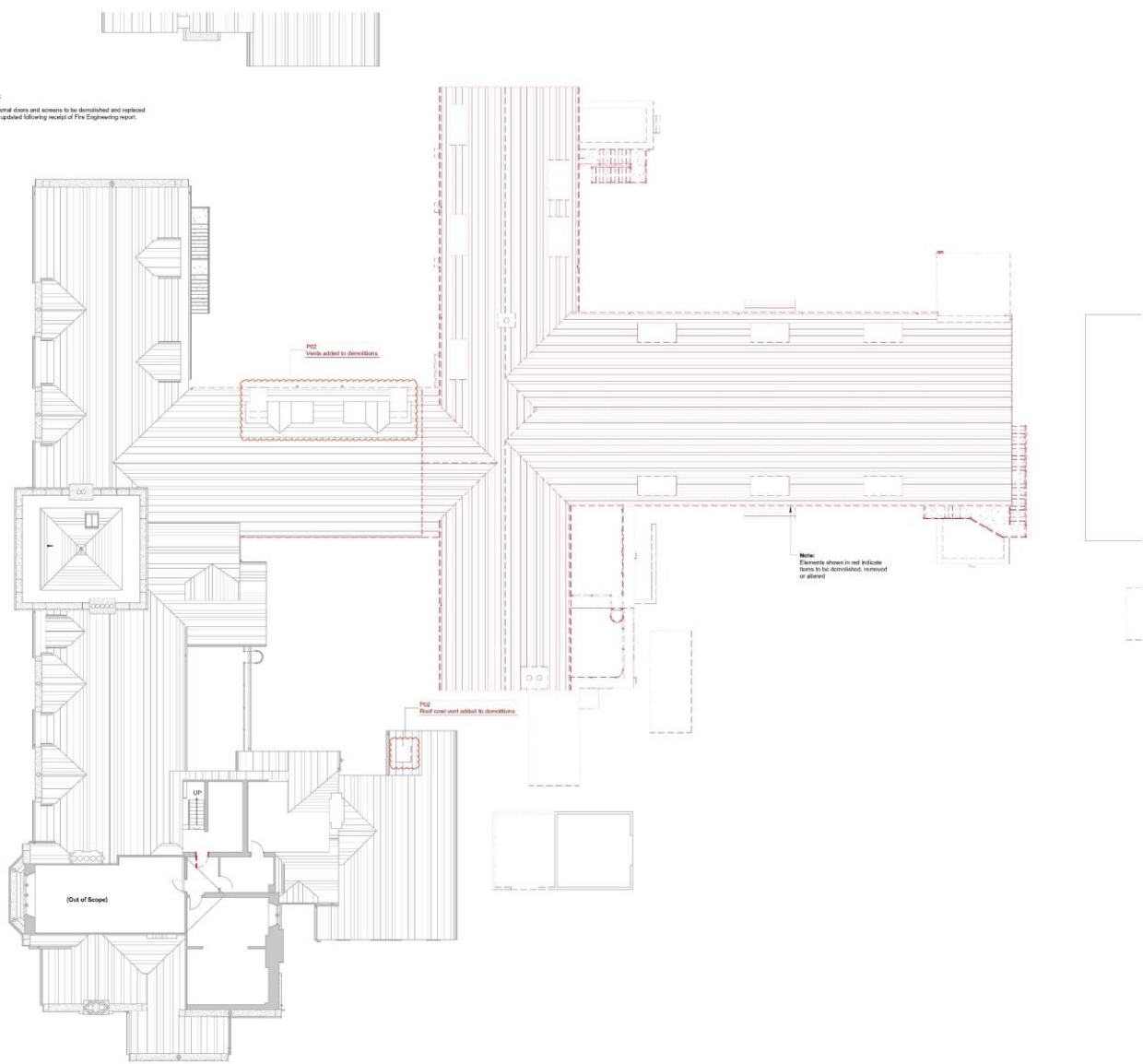
- Notes:**
1. All work to be carried out in accordance with the Building Regulations 2010.
  2. All work to be carried out in accordance with the Health and Safety at Work Act 1974.
  3. All work to be carried out in accordance with the Construction (Design and Management) Regulations 2015.
  4. All work to be carried out in accordance with the Environmental Protection Act 1990.
  5. All work to be carried out in accordance with the Equality Act 2010.
  6. All work to be carried out in accordance with the Planning (Listed Buildings and Conservation Areas) Act 1967.
  7. All work to be carried out in accordance with the Planning (Listed Buildings and Conservation Areas) Act 1967.
  8. All work to be carried out in accordance with the Planning (Listed Buildings and Conservation Areas) Act 1967.
  9. All work to be carried out in accordance with the Planning (Listed Buildings and Conservation Areas) Act 1967.
  10. All work to be carried out in accordance with the Planning (Listed Buildings and Conservation Areas) Act 1967.

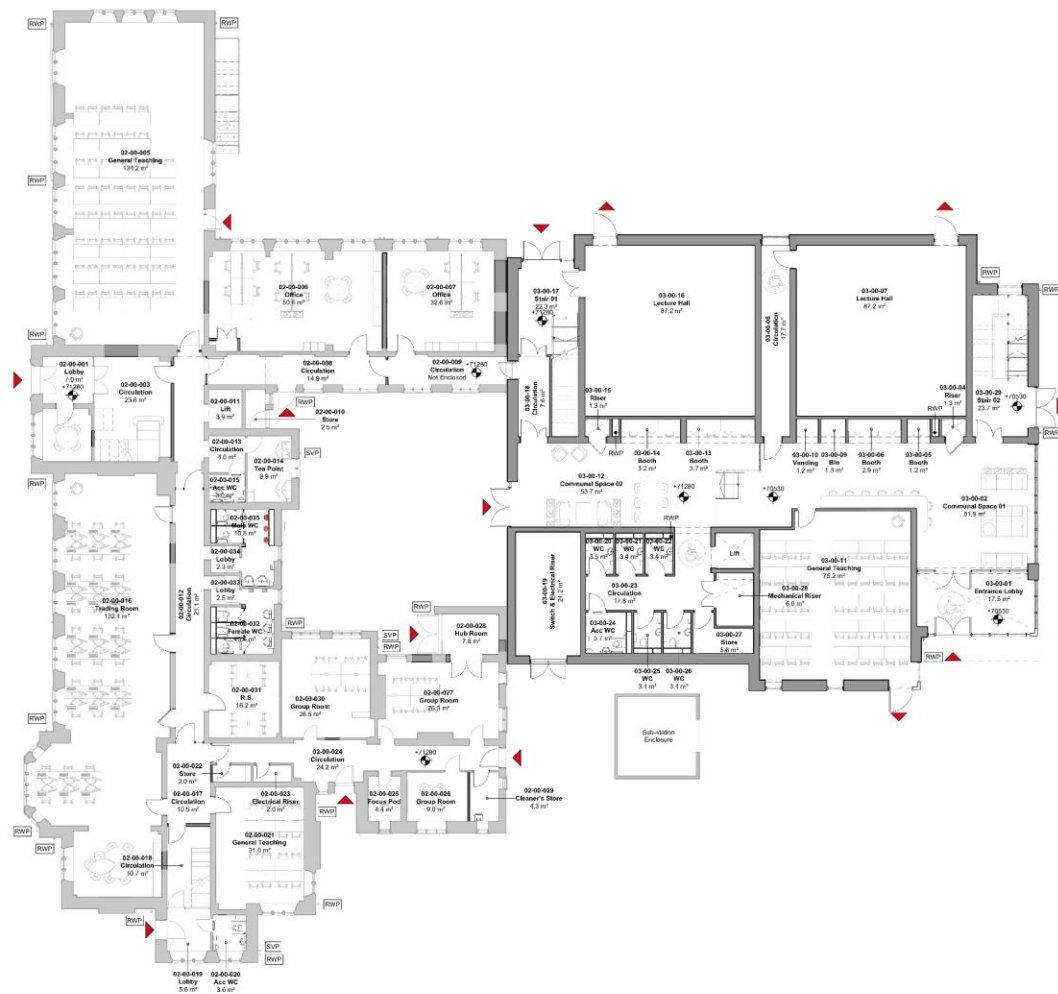




**Reported Note:**  
Full extent of internal doors and screens to be demolished and replaced unknown. To be updated following receipt of Fire Engineering report.

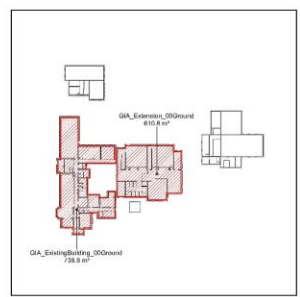
**Note:**  
Additional space under this area removed during excavations. No survey information available.





Room Schedule_Extension_00Ground		
Number	Name	Area
00LowerGround		
03-00-01	Entrance Lobby	17.3 m <sup>2</sup>
03-00-02	Commonal Space 01	81.9 m <sup>2</sup>
03-00-04	Riser	1.3 m <sup>2</sup>
03-00-05	Booth	1.2 m <sup>2</sup>
03-00-06	Booth	2.8 m <sup>2</sup>
03-00-07	Lecture Hall	87.2 m <sup>2</sup>
03-00-08	Circulation	17.7 m <sup>2</sup>
03-00-09	Stair	1.3 m <sup>2</sup>
03-00-10	Vending	1.2 m <sup>2</sup>
03-00-11	General Teaching	75.2 m <sup>2</sup>
03-00-28	Stair 02	23.7 m <sup>2</sup>
11		311.2 m <sup>2</sup>
00Ground		
03-00-12	Commonal Space 02	63.7 m <sup>2</sup>
03-00-13	Booth	3.7 m <sup>2</sup>
03-00-14	Booth	2.2 m <sup>2</sup>
03-00-15	Riser	1.3 m <sup>2</sup>
03-00-16	Lecture Hall	87.2 m <sup>2</sup>
03-00-17	Stair 01	22.3 m <sup>2</sup>
03-00-18	Circulation	74.6 m <sup>2</sup>
03-00-19	Stair & Electrical Riser	24.2 m <sup>2</sup>
03-00-20	WC	3.3 m <sup>2</sup>
03-00-21	WC	3.4 m <sup>2</sup>
03-00-22	WC	3.4 m <sup>2</sup>
03-00-23	Circulation	11.8 m <sup>2</sup>
03-00-24	Acc.WC	5.7 m <sup>2</sup>
03-00-25	WC	3.4 m <sup>2</sup>
03-00-26	WC	3.4 m <sup>2</sup>
03-00-27	Stair	5.6 m <sup>2</sup>
03-00-28	Mechanical Riser	6.0 m <sup>2</sup>
17		288.5 m <sup>2</sup>
Total NIA 28		599.7 m <sup>2</sup>

Room Schedule_Existing Building_00Ground		
Number	Name	Area
A08-LMA-02-ZZ-M1-A-002_30kloor_ExistingBuilding		
00Ground		
02-00-001	Lobby	7.0 m <sup>2</sup>
02-00-002	Meeting Space	7.4 m <sup>2</sup>
02-00-003	Circulation	23.6 m <sup>2</sup>
02-00-004	Circulation	9.4 m <sup>2</sup>
02-00-005	General Teaching	134.2 m <sup>2</sup>
02-00-006	Office	208.8 m <sup>2</sup>
02-00-007	Office	202.6 m <sup>2</sup>
02-00-008	Circulation	14.9 m <sup>2</sup>
02-00-009	Circulation	2.0 m <sup>2</sup>
02-00-010	Stair	3.9 m <sup>2</sup>
02-00-011	Lift	1.9 m <sup>2</sup>
02-00-012	Circulation	21.1 m <sup>2</sup>
02-00-013	Circulation	1.0 m <sup>2</sup>
02-00-014	Trsa Plant	8.8 m <sup>2</sup>
02-00-015	Acc.WC	3.0 m <sup>2</sup>
02-00-016	Teaching Room	132.4 m <sup>2</sup>
02-00-017	Circulation	105.1 m <sup>2</sup>
02-00-018	Circulation	10.7 m <sup>2</sup>
02-00-019	Lobby	5.6 m <sup>2</sup>
02-00-020	Acc.WC	3.4 m <sup>2</sup>
02-00-021	General Teaching	31.0 m <sup>2</sup>
02-00-022	Stair	2.0 m <sup>2</sup>
02-00-023	Electrical Riser	2.8 m <sup>2</sup>
02-00-024	Circulation	24.2 m <sup>2</sup>
02-00-025	Focus Pod	4.4 m <sup>2</sup>
02-00-026	Group Room	9.0 m <sup>2</sup>
02-00-027	Group Room	26.3 m <sup>2</sup>
02-00-028	Hub Room	7.8 m <sup>2</sup>
02-00-029	Chairman's Suite	4.3 m <sup>2</sup>
02-00-030	Group Room	28.5 m <sup>2</sup>
02-00-031	R.R.	16.2 m <sup>2</sup>
02-00-032	Female WC	10.6 m <sup>2</sup>
02-00-033	Lobby	2.8 m <sup>2</sup>
02-00-034	Lobby	2.3 m <sup>2</sup>
02-00-035	Male WC	10.3 m <sup>2</sup>
02-00-036	Electrical Riser	0.8 m <sup>2</sup>
		999.2 m <sup>2</sup>
Total NIA 30		999.2 m <sup>2</sup>

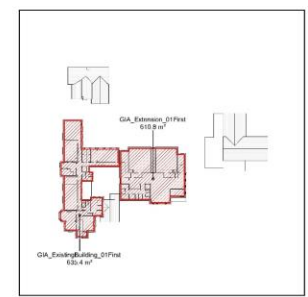


Notes  
 1. All dimensions are in meters.  
 2. All areas are in square meters.  
 3. All rooms are to be finished to the standard of the existing building.  
 4. All rooms are to be finished to the standard of the existing building.  
 5. All rooms are to be finished to the standard of the existing building.  
 6. All rooms are to be finished to the standard of the existing building.  
 7. All rooms are to be finished to the standard of the existing building.  
 8. All rooms are to be finished to the standard of the existing building.  
 9. All rooms are to be finished to the standard of the existing building.  
 10. All rooms are to be finished to the standard of the existing building.



Room Schedule_Extension_01First		
Number	Name	Area
01-01-01	Stair 02	10.2 m <sup>2</sup>
01-01-03	Study Lounge	120.7 m <sup>2</sup>
01-01-04	Store	2.3 m <sup>2</sup>
01-01-05	Lobby	9.3 m <sup>2</sup>
01-01-07	Lobby	9.3 m <sup>2</sup>
01-01-08	Stair 01	18.1 m <sup>2</sup>
01-01-10	Lobby	8.8 m <sup>2</sup>
01-01-12	Electrical Riser	5.8 m <sup>2</sup>
01-01-14	Mechanical Riser	6.1 m <sup>2</sup>
01-01-15	Classroom Store	5.5 m <sup>2</sup>
01-01-16	WC	3.4 m <sup>2</sup>
01-01-17	WC	3.4 m <sup>2</sup>
01-01-18	Acad WC	5.8 m <sup>2</sup>
01-01-19	Server Room	7.8 m <sup>2</sup>
01-01-20	Store	4.4 m <sup>2</sup>
01-01-21	Circulation	24.8 m <sup>2</sup>
01-01-22	Yield Point	9.1 m <sup>2</sup>
<b>Total MA 17</b>		<b>303.3 m<sup>2</sup></b>

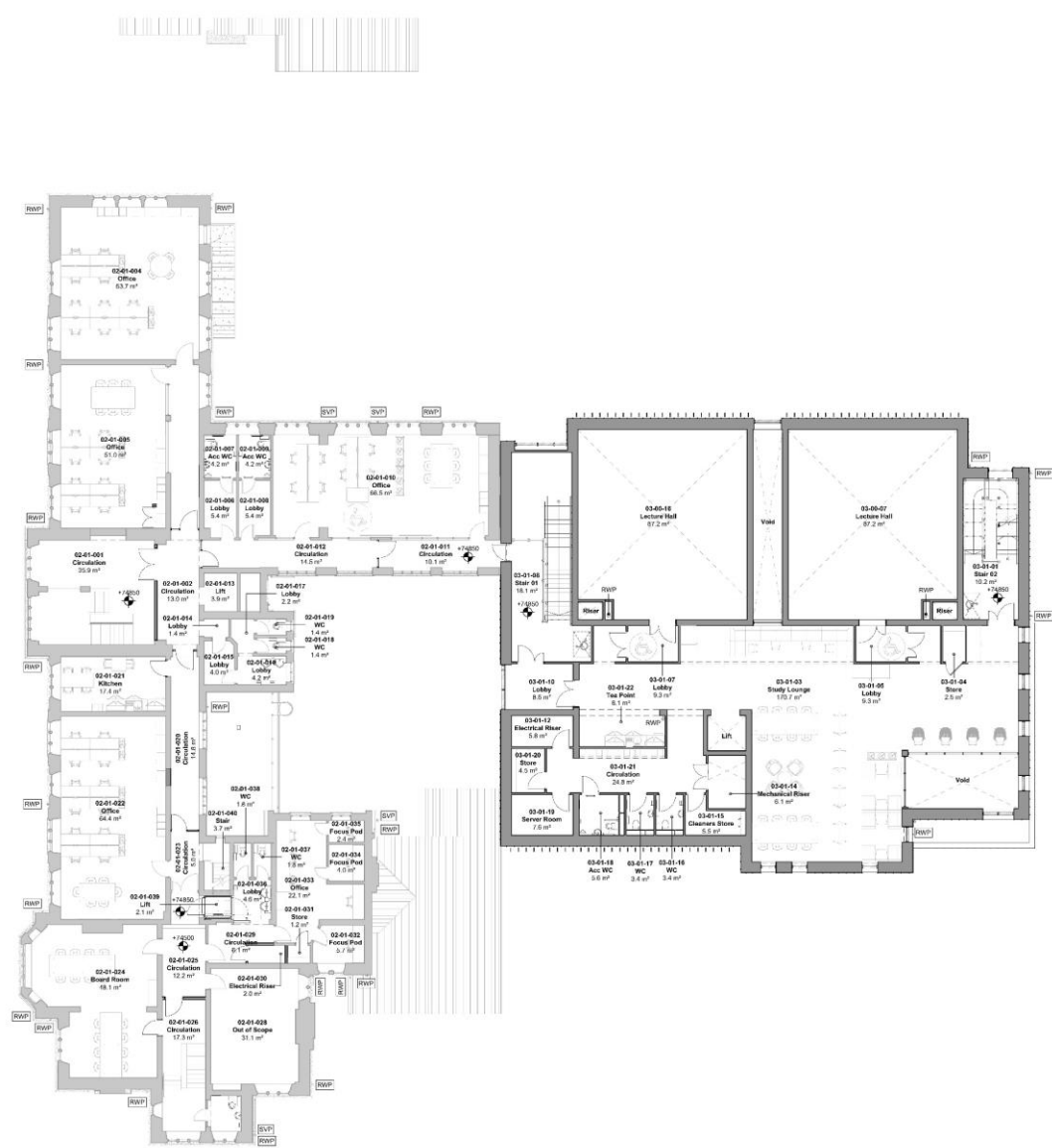
Room Schedule_Existing Building_01First		
Number	Name	Area
AGB-LMA-02-ZZ-M5-A-0002_SCMModel_ExistingBuilding		
01First		
01-01-001	Circulation	36.9 m <sup>2</sup>
01-01-002	Circulation	13.0 m <sup>2</sup>
01-01-003	Circulation	14.0 m <sup>2</sup>
01-01-004	Office	63.7 m <sup>2</sup>
01-01-005	Office	6.0 m <sup>2</sup>
01-01-006	Lobby	5.4 m <sup>2</sup>
01-01-007	Acad WC	4.3 m <sup>2</sup>
01-01-008	Lobby	5.4 m <sup>2</sup>
01-01-009	Acad WC	4.3 m <sup>2</sup>
01-01-010	Office	86.5 m <sup>2</sup>
01-01-011	Circulation	10.1 m <sup>2</sup>
01-01-012	Circulation	14.5 m <sup>2</sup>
01-01-013	Lift	3.9 m <sup>2</sup>
01-01-014	Lobby	1.4 m <sup>2</sup>
01-01-015	Lobby	4.0 m <sup>2</sup>
01-01-016	Lobby	4.2 m <sup>2</sup>
01-01-017	Lobby	2.2 m <sup>2</sup>
01-01-018	WC	1.4 m <sup>2</sup>
01-01-019	WC	1.4 m <sup>2</sup>
01-01-020	Circulation	18.0 m <sup>2</sup>
01-01-021	Stair	17.8 m <sup>2</sup>
01-01-022	Office	64.1 m <sup>2</sup>
01-01-023	Circulation	3.9 m <sup>2</sup>
01-01-024	Board Room	98.1 m <sup>2</sup>
01-01-025	Circulation	12.2 m <sup>2</sup>
01-01-026	Circulation	17.3 m <sup>2</sup>
01-01-027	QA WC	3.3 m <sup>2</sup>
01-01-028	Out of Storage	31.1 m <sup>2</sup>
01-01-029	Circulation	6.1 m <sup>2</sup>
01-01-030	Electrical Riser	2.0 m <sup>2</sup>
01-01-031	Stair	1.7 m <sup>2</sup>
01-01-032	Focus Pod	6.7 m <sup>2</sup>
01-01-033	Office	22.1 m <sup>2</sup>
01-01-034	Focus Pod	4.0 m <sup>2</sup>
01-01-035	Focus Pod	2.4 m <sup>2</sup>
01-01-036	Lobby	4.5 m <sup>2</sup>
01-01-037	WC	1.8 m <sup>2</sup>
01-01-038	WC	1.8 m <sup>2</sup>
01-01-039	Lift	2.1 m <sup>2</sup>
01-01-040	Stair	3.1 m <sup>2</sup>
01-01-041	Electrical Riser	0.7 m <sup>2</sup>
		<b>1014.4 m<sup>2</sup></b>



AGB LMA 02 ZZ M5 A 0002 A  
**2101 P02**  
 [EXTENSION]  
 GA\_Plan\_Proposed\_01First

Business School  
 Ranger University, Floodwood  
 Road, George L45 37A  
 Status: D21 Tender  
 Project Number: 2101

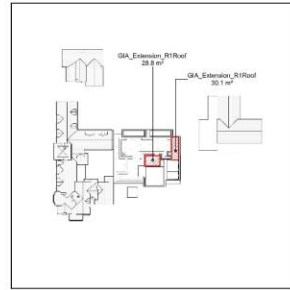
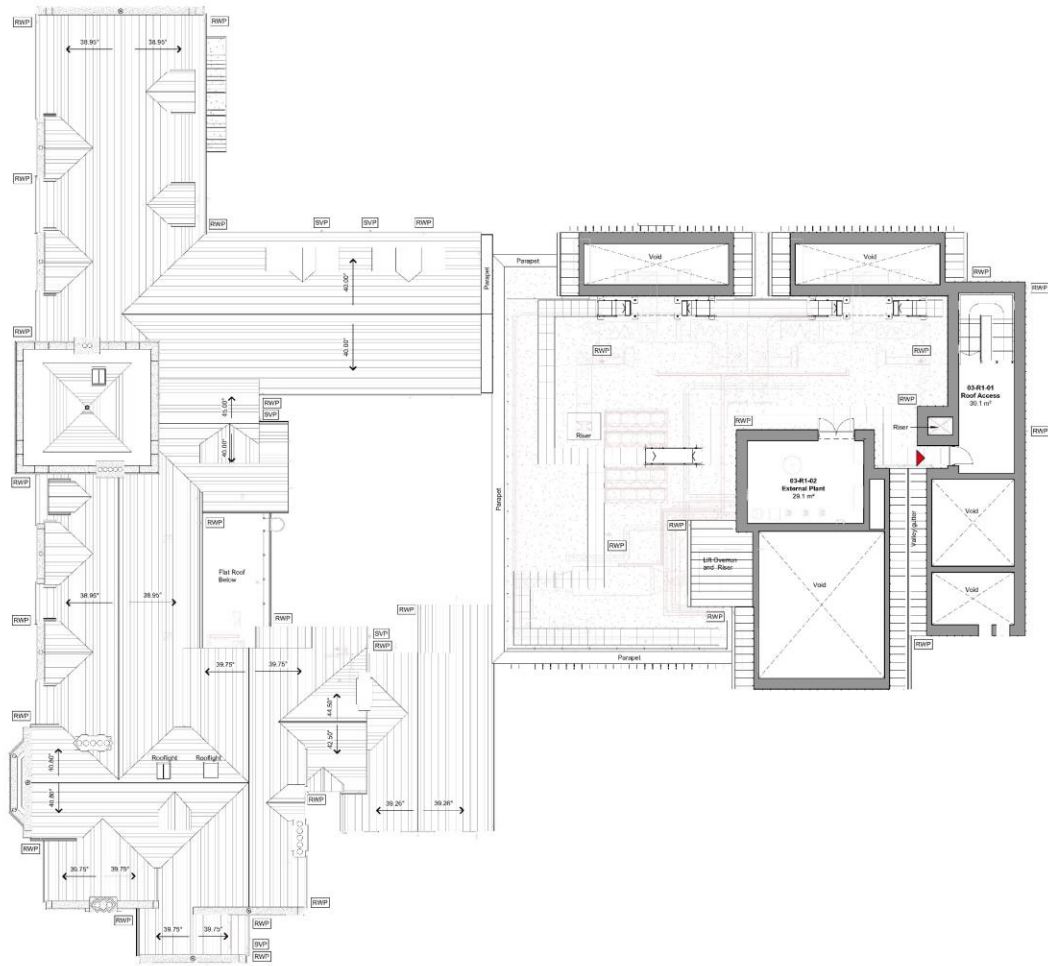
**LEVELLOCK** WFORELL  
 ARCHITECTS  
 3 Sainsbury Street Creative CH1 3LS  
 01244 490221  
 www.levellockwforesell.com





Room Schedule_Extension_R1Roof		
Number	Name	Area
R1Roof		
03-R1-01	Roof Access	30.1 m <sup>2</sup>
03-R1-02	External Plant	25.1 m <sup>2</sup>
<b>Total NA: 2</b>		<b>55.2 m<sup>2</sup></b>

Notes:  
 1. The information contained herein is the property of the Architect and is to be used only for the project and site identified herein.  
 2. No part of this document may be reproduced, stored in a retrieval system, or transmitted in any form or by any means, electronic, mechanical, photocopying, recording, or by any information storage and retrieval system, without the prior written permission of the Architect.  
 3. The Architect assumes no responsibility for the accuracy or completeness of the information provided herein, and the user of this information is advised to verify the information with the appropriate authorities.  
 4. The Architect is not responsible for any errors or omissions in this document, and the user of this information is advised to verify the information with the appropriate authorities.  
 5. The Architect is not responsible for any construction methods or materials used in the construction of the project, and the user of this information is advised to verify the information with the appropriate authorities.  
 6. The Architect is not responsible for any construction methods or materials used in the construction of the project, and the user of this information is advised to verify the information with the appropriate authorities.  
 7. The Architect is not responsible for any construction methods or materials used in the construction of the project, and the user of this information is advised to verify the information with the appropriate authorities.  
 8. The Architect is not responsible for any construction methods or materials used in the construction of the project, and the user of this information is advised to verify the information with the appropriate authorities.  
 9. The Architect is not responsible for any construction methods or materials used in the construction of the project, and the user of this information is advised to verify the information with the appropriate authorities.  
 10. The Architect is not responsible for any construction methods or materials used in the construction of the project, and the user of this information is advised to verify the information with the appropriate authorities.



01 GA\_Plan\_Proposed\_R1Roof\_RoofAccess  
Scale: 1 : 125







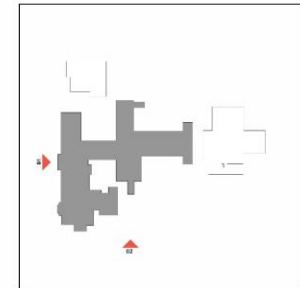
**01 GA\_Elevations\_Existing\_01**  
Scale: 1 : 125



**02 GA\_Elevations\_Existing\_02**  
Scale: 1 : 125

**Legend | GA Elevations**

	<b>Element</b>   Wall   Existing <b>Product</b>   Cladding <b>Finish</b>   Stone / Natural		<b>Element</b>   Cladding Screens   Existing <b>Product</b>   Cladding <b>Finish</b>   Clear
	<b>Element</b>   Wall   Existing <b>Product</b>   Cladding <b>Finish</b>   Portlandash Render / Natural		<b>Element</b>   Cladding Screens   Existing <b>Product</b>   Cladding <b>Finish</b>   Coloured
	<b>Element</b>   Wall   Existing <b>Product</b>   Cladding <b>Finish</b>   Tiles / Grey		<b>Element</b>   Cladding Screens   Existing <b>Product</b>   Cladding <b>Finish</b>   Pattern
	<b>Element</b>   Roof   Existing <b>Product</b>   Pitched Roof <b>Finish</b>   Slates / Grey		<b>Element</b>   Vents   Existing <b>Product</b>   Louvre <b>Finish</b>   Metal / White
	<b>Element</b>   Facade Features, Coping & Cills   Existing <b>Product</b>   Stone <b>Finish</b>   Natural / Bioge		
	<b>Element</b>   Chimney   Existing <b>Product</b>   Product Name <b>Finish</b>   Finish Colour		



0 1.5 3.0 6.0 9m

1:25 @ A1

**Notes:**

1. The information contained in this document is for the use of the client only and is not to be used for any other purpose.
2. The information contained in this document is the property of the architect and is not to be used for any other purpose.
3. The information contained in this document is not to be used for any other purpose.
4. The information contained in this document is not to be used for any other purpose.
5. The information contained in this document is not to be used for any other purpose.
6. The information contained in this document is not to be used for any other purpose.
7. The information contained in this document is not to be used for any other purpose.
8. The information contained in this document is not to be used for any other purpose.
9. The information contained in this document is not to be used for any other purpose.
10. The information contained in this document is not to be used for any other purpose.



ADD | LMA 02 22 DR A  
**2200 P03**  
(EXISTING BUILDING)  
GA\_Elevations\_Existing\_01

New Business School  
Ranger University, Fieldlands  
Road, Glasgow G12 7TE  
Status: D2 | Tender  
Project Number: 2330



3 Saverby Street Chester CH1 3LS  
01244 606221  
www.levellockmodel.com



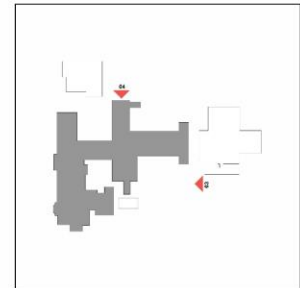
03 GA Elevations\_Existing\_03  
Scale: 1:125



04 GA Elevations\_Existing\_04  
Scale: 1:125

### Legend | GA Elevations

	<b>Element</b>   Wall   Existing <b>Product</b>   Cladding <b>Finish</b>   Stone / Natural		<b>Element</b>   Cladding Screens   Existing <b>Product</b>   Cladding <b>Finish</b>   Clear
	<b>Element</b>   Wall   Existing <b>Product</b>   Cladding <b>Finish</b>   Portlandish Render / Natural		<b>Element</b>   Cladding Screens   Existing <b>Product</b>   Cladding <b>Finish</b>   Coloured
	<b>Element</b>   Wall   Existing <b>Product</b>   Cladding <b>Finish</b>   Tiles / Grey		<b>Element</b>   Cladding Screens   Existing <b>Product</b>   Cladding <b>Finish</b>   Pattern
	<b>Element</b>   Roof   Existing <b>Product</b>   Pitched Roof <b>Finish</b>   Slates / Grey		<b>Element</b>   Vents   Existing <b>Product</b>   Louvre <b>Finish</b>   Metal / White
	<b>Element</b>   Facade Features, Coping & Cills   Existing <b>Product</b>   Stone <b>Finish</b>   Natural / Bioge		
	<b>Element</b>   Chimney   Existing <b>Product</b>   Product Name <b>Finish</b>   Brick / Colour		



0 1.5 3.0 6.0

1:25 @ A1

#### Notes

1. The information contained in this document is for the sole use of the client and is not to be used for any other purpose.
2. The information contained in this document is not to be used for any other purpose.
3. The information contained in this document is not to be used for any other purpose.
4. The information contained in this document is not to be used for any other purpose.
5. The information contained in this document is not to be used for any other purpose.
6. The information contained in this document is not to be used for any other purpose.
7. The information contained in this document is not to be used for any other purpose.
8. The information contained in this document is not to be used for any other purpose.
9. The information contained in this document is not to be used for any other purpose.
10. The information contained in this document is not to be used for any other purpose.



11/11/2024 10:00:00 AM  
11/11/2024 10:00:00 AM  
11/11/2024 10:00:00 AM  
11/11/2024 10:00:00 AM

ADD | LMA 02 22 DR A  
**2201 P04**  
(EXISTING BUILDING)  
GA\_Elevations\_Existing\_02

New Business School  
Ranger University, Fifehead  
Road, Benger LS2 2TA

Status: D2 | For Tender

Project Number: 2330



3 Saverley Street Chester CH1 3LS  
01244 606221  
www.levellockmodel.com



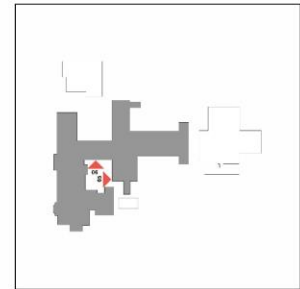
05 GA Elevations\_Existing\_05  
Scale: 1 : 125



06 GA Elevations\_Existing\_06  
Scale: 1 : 125

Legend | GA Elevations

 Element   Wall   Existing Product   Cladding Finish   Stone   Natural	 Element   Glazing Screens   Existing Product   Glazing Finish   Clear
 Element   Wall   Existing Product   Cladding Finish   Plaster   Render   Natural	 Element   Glazing Screens   Existing Product   Glazing Finish   Coloured
 Element   Wall   Existing Product   Cladding Finish   Tiles   Grey	 Element   Glazing Screens   Existing Product   Glazing Finish   Pattern
 Element   Roof   Existing Product   Pitched Roof Finish   Slates   Grey	 Element   Vents   Existing Product   Louvre Finish   Metal   White
 Element   Facade Features, Coping & Cills   Existing Product   Stone Finish   Natural   Bioge	
 Element   Chimney   Existing Product   Product Name Finish   Brick   Colour	





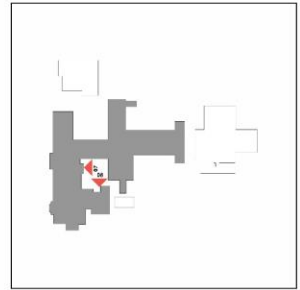
**07 GA Elevations\_Existing\_07**  
Scale: 1 : 125



**08 GA Elevations\_Existing\_08**  
Scale: 1 : 125

**Legend | GA Elevations**

	<b>Element</b>   Wall   Existing <b>Product</b>   Cladding <b>Finish</b>   Stone / Natural		<b>Element</b>   Glazing Screens   Existing <b>Product</b>   Glazing <b>Finish</b>   Clear
	<b>Element</b>   Wall   Existing <b>Product</b>   Cladding <b>Finish</b>   Portlandish Render / Natural		<b>Element</b>   Glazing Screens   Existing <b>Product</b>   Glazing <b>Finish</b>   Coloured
	<b>Element</b>   Wall   Existing <b>Product</b>   Cladding <b>Finish</b>   Tiles / Grey		<b>Element</b>   Glazing Screens   Existing <b>Product</b>   Glazing <b>Finish</b>   Pattern
	<b>Element</b>   Roof   Existing <b>Product</b>   Pitched Roof <b>Finish</b>   Slates / Grey		<b>Element</b>   Vents   Existing <b>Product</b>   Louvre <b>Finish</b>   Metal   White
	<b>Element</b>   Facade Features, Coping & Cills   Existing <b>Product</b>   Stone <b>Finish</b>   Natural / Bioge		
	<b>Element</b>   Chimney   Existing <b>Product</b>   Product Name <b>Finish</b>   Brick / Colour		



0 1.5 3.0 6.0  
1:125 @ A1

**Notes:**

1. The information contained herein is for the use of the client only and is not to be used for any other purpose.
2. The information contained herein is not to be used for any other purpose.
3. The information contained herein is not to be used for any other purpose.
4. The information contained herein is not to be used for any other purpose.
5. The information contained herein is not to be used for any other purpose.
6. The information contained herein is not to be used for any other purpose.
7. The information contained herein is not to be used for any other purpose.
8. The information contained herein is not to be used for any other purpose.
9. The information contained herein is not to be used for any other purpose.
10. The information contained herein is not to be used for any other purpose.

3 Searley Street Chester CH1 3LS  
01244 604201  
www.hendockmtdorrell.com

**HENDOCK MTDORRELL**  
ARCHITECTS

ADD | LMA 02 22 DR A  
**2203 P04**  
[EXISTING BUILDING]  
GA\_Elevations\_Existing\_04

New Business School  
Ranger University, Ffield Road  
Rend, Renae L15 2TA

Status: D2 | For Tender

Project Number: 2330















**01 GA\_Elevation\_Proposed\_01**  
Scale: 1 : 125




**02 GA\_Elevation\_Proposed\_02**  
Scale: 1 : 125

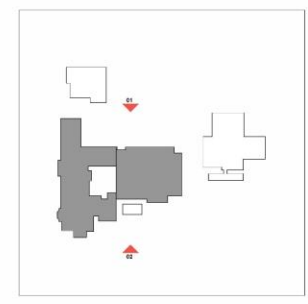
**Legend | GA Elevations**

**Existing Building**

 Element   Wall   Existing Product   Cladding   Restored to Conservation Architect Specification Finish   Stone   Natural	 Element   Cladding   Existing Product   Cladding   Restored to Conservation Architect Specification Finish   Clear
 Element   Wall   Existing Product   Cladding   Restored to Conservation Architect Specification Finish   Pilkington Render   Natural	 Element   Cladding   Existing Product   Cladding   Restored to Conservation Architect Specification Finish   Clear
 Element   Wall   Existing Product   Cladding   Restored to Conservation Architect Specification Finish   The   Grey	 Element   Cladding   Existing Product   Cladding   Restored to Conservation Architect Specification Finish   Pattern
 Element   Roof   Existing Product   Flatbed Roof   Restored to Conservation Architect Specification Finish   Slates   Grey	 Element   Vents   Existing Product   Louvre Finish   Metal   White
 Element   Facade Features, Coping & Cills   Existing Product   Sandstone   Restored to Conservation Architect Specification Finish   Natural   Red	 Element   Rainwater Goods   Existing Product   Rainwater Goods   Restored to Conservation Architect Specification Finish   Red
 Element   Chimney   Existing Product   Masonry Brickwork Finish   Flisan   Red	 Element   External Doors   Existing Doors Retained Product   External Doors   Restored to Conservation Architect Specification Finish   Red
	 Element   External Doors   New Product   Hardwood   Painted to match existing doors Finish   Hardwood   Painted to match existing doors

**Extension Building**

 Element   Wall Product   Masonry Brickwork Finish   Red	 Element   Facade Product   Aluminium Feature Fin Finish   Red  RAL 8002 Signalbrun or closest to match VM2inc Cladding
 Element   Wall Product   Masonry Brickwork Finish   Grey	 Element   Facade Product   Aluminium Feature Fin Finish   Red  RAL 7005 Traffic Grey B or closest to match VM2inc Cladding
 Element   Wall Product   VM2inc Standing Seam Wall / Roof System Finish   Finish   PIGMENT RangerRed	 Element   Cladding Screens Product   Cladding Finish   Clear
 Element   Wall Product   VM2inc Standing Seam Wall / Roof System Finish   Finish   PIGMENT RangerRed	 Element   Rainwater Goods Product   Gutters   Downpipes Finish   Red  RAL 8002 Signalbrun or closest to match VM2inc Cladding
 Element   Curtain Wall Product   CPC Aluminium   Door & Window Frames Finish   RAL 7043 Traffic Grey B   Satin Finish	 Element   Flashing   Cladding   Cills Product   EPDM Aluminium Finish   Red  RAL 8002 Signalbrun or closest to match VM2inc Cladding
 Element   Curtain Wall Product   CPC Aluminium   Louvre Panel Finish   RAL 7043 Traffic Grey B   Satin Finish	 Element   Rainwater Goods Product   Gutters   Downpipes Finish   Red  RAL 7043 Traffic Grey B or closest to match VM2inc Cladding
 Element   Facade Signs Product   Signage Zone Finish   To Contractor's choice and Client's Requirements	 Element   Flashing   Cladding   Cills Product   CPC Aluminium Finish   Red  RAL 7005 Traffic Grey B or closest to match VM2inc Cladding

















03 GA\_Elevation\_Proposed\_03  
Scale: 1: 125








04 GA\_Elevation\_Proposed\_04  
Scale: 1: 125

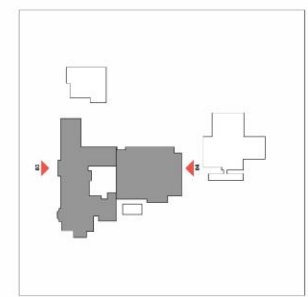
**Legend | GA Elevations**

**Existing Building**

 <b>Element</b>   Wall   Existing <b>Product</b>   Cladding   Restored to Conservation Architect Specification <b>Finish</b>   Stone   Natural	 <b>Element</b>   Cladding   Existing <b>Product</b>   Cladding   Restored to Conservation Architect Specification <b>Finish</b>   Clear
 <b>Element</b>   Wall   Existing <b>Product</b>   Cladding   Restored to Conservation Architect Specification <b>Finish</b>   Plasterless Render   Natural	 <b>Element</b>   Cladding   Existing <b>Product</b>   Cladding   Restored to Conservation Architect Specification <b>Finish</b>   Clear
 <b>Element</b>   Wall   Existing <b>Product</b>   Cladding   Restored to Conservation Architect Specification <b>Finish</b>   Thin   Grey	 <b>Element</b>   Cladding   Existing <b>Product</b>   Location Glass   Restored to Conservation Architect Specification <b>Finish</b>   Clear
 <b>Element</b>   Roof   Existing <b>Product</b>   Flat   Roof   Required to Conservation Architect Specification <b>Finish</b>   Slates   Grey	 <b>Element</b>   Vents   Existing <b>Product</b>   Louvre <b>Finish</b>   Metal   White
 <b>Element</b>   Façade Features, Coping & Cills   Existing <b>Product</b>   Stone   Existing <b>Finish</b>   Natural   Red	 <b>Element</b>   Rainwater Goods   Existing <b>Product</b>   Rainwater Goods   Restored to Conservation Architect Specification <b>Finish</b>   Red
 <b>Element</b>   Chimney   Existing <b>Product</b>   Masonry Brickwork <b>Finish</b>   Flues   Red	 <b>Element</b>   External Doors   Existing Doors Retained <b>Product</b>   External Doors   Restored to Conservation Architect Specification <b>Finish</b>   Red
	 <b>Element</b>   External Doors   New <b>Product</b>   External Doors   New <b>Finish</b>   Hardware   Painted to match existing doors

**Extension Building**

 <b>Element</b>   Wall <b>Product</b>   Masonry Brickwork <b>Finish</b>   Red	 <b>Element</b>   Façade <b>Product</b>   Aluminium Feature Fins <b>Finish</b>   Red   RAL 8002 Signalbrun or closest to match VM2nc Cladding
 <b>Element</b>   Wall <b>Product</b>   Masonry Brickwork <b>Finish</b>   Grey	 <b>Element</b>   Façade <b>Product</b>   Aluminium Feature Fins <b>Finish</b>   Red   RAL 7008 Traffic Grey B or closest to match VM2nc Cladding
 <b>Element</b>   Wall <b>Product</b>   VM2nc Standing Seam Wall / Roof System <b>Finish</b>   Grey   PIGMENTO RangerRed	 <b>Element</b>   Cladding Screens <b>Product</b>   Cladding <b>Finish</b>   Clear
 <b>Element</b>   Wall <b>Product</b>   VM2nc Standing Seam Wall / Roof System <b>Finish</b>   RAL 7043 Traffic Grey B   Satin Finish	 <b>Element</b>   Rainwater Goods <b>Product</b>   Gutters   Downpipes <b>Finish</b>   Red   RAL 8002 Signalbrun or closest to match VM2nc Cladding
 <b>Element</b>   Curtain Wall <b>Product</b>   PVC Aluminium   Door & Window Frames <b>Finish</b>   RAL 7043 Traffic Grey B   Satin Finish	 <b>Element</b>   Flashing   Coping   Cills <b>Product</b>   PVC Aluminium <b>Finish</b>   Red   RAL 8002 Signalbrun or closest to match VM2nc Cladding
 <b>Element</b>   Curtain Wall <b>Product</b>   PVC Aluminium   Louvre Panel <b>Finish</b>   RAL 7043 Traffic Grey B   Satin Finish	 <b>Element</b>   Rainwater Goods <b>Product</b>   Gutters   Downpipes <b>Finish</b>   Red   RAL 7043 Traffic Grey B or closest to match VM2nc Cladding
 <b>Element</b>   Façade Signs <b>Product</b>   Signage Zone <b>Finish</b>   To Contractor's choice and Client's Requirements	 <b>Element</b>   Flashing   Coping   Cills <b>Product</b>   PVC Aluminium <b>Finish</b>   Red   RAL 7008 Traffic Grey B or closest to match VM2nc Cladding


















05 GA\_Elevation\_Proposed\_05  
Scale: 1 : 125



06 GA\_Elevation\_Proposed\_06  
Scale: 1 : 125

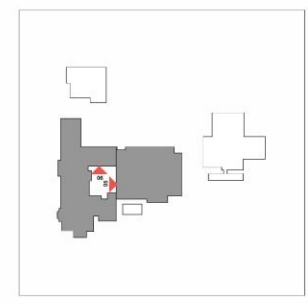
**Legend | GA Elevations**

**Existing Building**

 Element   Wall / Existing Product   Cladding / Restored to Conservation Architect Specification Finish   Stone / Natural	 Element   Glazing / Existing Product   Cladding / Restored to Conservation Architect Specification Finish   Clear
 Element   Wall / Existing Product   Cladding / Restored to Conservation Architect Specification Finish   White / Plaster / Render / Natural	 Element   Glazing / Existing Product   Cladding / Restored to Conservation Architect Specification Finish   Clear
 Element   Wall / Existing Product   Cladding / Restored to Conservation Architect Specification Finish   Grey	 Element   Glazing / Existing Product   Cladding / Restored to Conservation Architect Specification Finish   Clear
 Element   Roof / Existing Product   Flat / Roof / Required to Conservation Architect Specification Finish   Slate / Grey	 Element   Vitrals / Existing Product   Lucerne Finish   Metal / White
 Element   Façade Features, Coping & Cills / Existing Product   Coping / Required to Conservation Architect Specification Finish   Natural / Red	 Element   Rainwater Goods / Existing Product   Rainwater Goods / Required to Conservation Architect Specification Finish   Red
 Element   Chimney / Existing Product   Masonry Brickwork Finish   Fluted / Red	 Element   External Doors / Existing Doors Retained Product   External Doors / Restored to Conservation Architect Specification Finish   Red
	 Element   External Doors / New Product   External Doors Finish   Hardware / Painted to match existing doors

**Extension Building**

 Element   Wall / Product Product   Masonry Brickwork Finish   Red	 Element   Façade Product   Aluminum Feature Fins Finish   Red /RAL 8002 Signalbrun or closest to match VM2nc Cladding
 Element   Wall / Product Product   Masonry Brickwork Finish   Grey	 Element   Façade Product   Aluminum Feature Fins Finish   Red /RAL 7005 Traffic Grey B or closest to match VM2nc Cladding
 Element   Wall / Product Product   Standing Seam Wall / Roof System Finish   Finish / PIGMENTO Ranger Red	 Element   Glazing Screens Product   Clear Finish   Clear
 Element   Wall / Product Product   Standing Seam Wall / Roof System Finish   Finish / PIGMENTO Ranger Red	 Element   Rainwater Goods Product   Cisterns / Downpipes Finish   Red /RAL 8002 Signalbrun or closest to match VM2nc Cladding
 Element   Wall / Product Product   Standing Seam Wall / Roof System Finish   Finish / PIGMENTO Grey	 Element   Rainwater Goods Product   PVC Aluminium Finish   Red /RAL 8002 Signalbrun or closest to match VM2nc Cladding
 Element   Curtain Wall / Product Product   PVC Aluminium / Door & Window Frames Finish   RAL 7043 Traffic Grey B / Satin Finish	 Element   Rainwater Goods Product   Downpipes / Downpipes Finish   Red /RAL 7043 Traffic Grey B or closest to match VM2nc Cladding
 Element   Curtain Wall / Product Product   PVC Aluminium / Lucerne Panel Finish   RAL 7043 Traffic Grey B / Satin Finish	 Element   Rainwater Goods Product   PVC Aluminium Finish   Red /RAL 8002 Signalbrun or closest to match VM2nc Cladding
 Element   Fascia Signs / Product Product   Signage Zone Finish   To Contractor's choice and Client's Requirements	 Element   Fascia Signs / Product Product   PVC Aluminium Finish   Red /RAL 7005 Traffic Grey B or closest to match VM2nc Cladding

















07 GA\_Elevation\_Proposed\_07  
Scale: 1 : 125






08 GA\_Elevation\_Proposed\_08  
Scale: 1 : 125

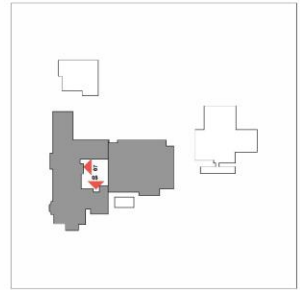
Legend | GA Elevations

Existing Building

 Element   Wall   Existing Product   Cladding   Restored to Conservation Architect Specification Finish   Stone Natural	 Element   Cladding   Existing Product   Cladding   Restored to Conservation Architect Specification Finish   Clear
 Element   Wall   Existing Product   Cladding   Restored to Conservation Architect Specification Finish   Mikalshen Render (Natural)	 Element   Cladding   Existing Product   Cladding   Restored to Conservation Architect Specification Finish   Clear
 Element   Wall   Existing Product   Cladding   Restored to Conservation Architect Specification Finish   Thin Grey	 Element   Cladding   Existing Product   Cladding   Restored to Conservation Architect Specification Finish   Pattern
 Element   Roof   Existing Product   Flatbed Roof   Restored to Conservation Architect Specification Finish   Slates   Grey	 Element   Vents   Existing Product   Louvre Finish   Metal   White
 Element   Facade Features, Coping & Cills   Existing Product   Stone   Restored to Conservation Architect Specification Finish   Natural   Red	 Element   Rainwater Goods   Existing Product   Rainwater Goods   Restored to Conservation Architect Specification Finish   Red
 Element   Chimney   Existing Product   Masonry Brickwork Finish   Fluted   Red	 Element   External Doors   Existing Doors Retained Product   External Doors   Restored to Conservation Architect Specification Finish   Red
	 Element   External Doors   New Product   External Doors Finish   Hardware   Painted to match existing doors

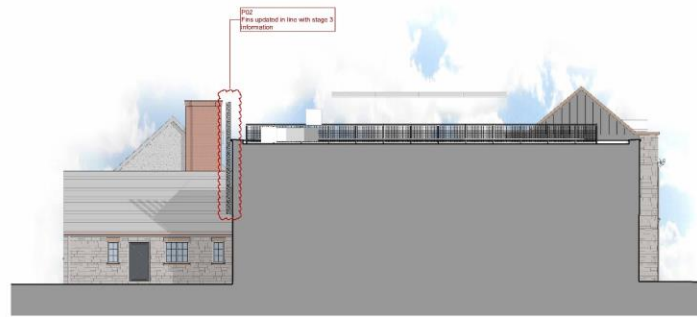
Extension Building

 Element   Wall Product   Masonry Brickwork Finish   Red	 Element   Facade Product   Aluminium Feature Fins Finish   Red  RAL 8002 Signalbrun or closest to match VM2nc Cladding
 Element   Wall Product   Masonry Brickwork Finish   Grey	 Element   Facade Product   Aluminium Feature Fins Finish   Red  RAL 7091 Traffic Grey B or closest to match VM2nc Cladding
 Element   Wall Product   VM2nc Standing Seam Wall / Roof System Finish   Finish   FOMENTO RangerRed	 Element   Glazing Screens Product   Cladding Finish   Clear
 Element   Wall Product   VM2nc Standing Seam Wall / Roof System Finish   Finish   FOMENTO Grey	 Element   Rainwater Goods Product   Gutters Downpipes Finish   Red  RAL 8002 Signalbrun or closest to match VM2nc Cladding
 Element   Curtain Wall Product   UPVC Aluminium   Door & Window Frames Finish  RAL 7043 Traffic Grey B   Sateh Finish	 Element   Flashing   Coping   Cills Product   UPVC Aluminium Finish   Red  RAL 8002 Signalbrun or closest to match VM2nc Cladding
 Element   Curtain Wall Product   UPVC Aluminium   Louvre Panel Finish  RAL 7043 Traffic Grey B   Sateh Finish	 Element   Rainwater Goods Product   Gutters   Louvre Finish   Red  RAL 7043 Traffic Grey B or closest to match VM2nc Cladding
 Element   Facade Signs Product   Signage Zone Finish   To Contractor's choice and Client's Requirements	 Element   Flashing   Coping   Cills Product   UPVC Aluminium Finish   Red  RAL 7091 Traffic Grey B or closest to match VM2nc Cladding





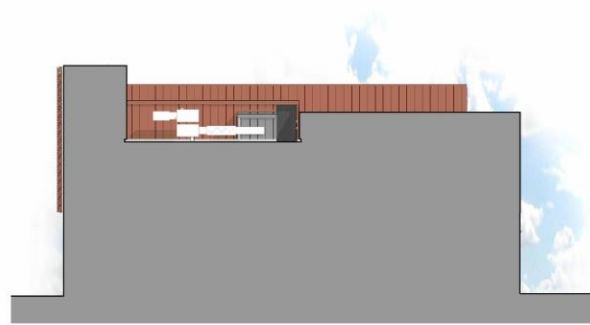
**09 GA\_Elevation\_Proposed\_09**  
Scale: 1 : 125



**10 GA\_Elevation\_Proposed\_10**  
Scale: 1 : 125




















**11 GA\_Elevation\_Proposed\_11**  
Scale: 1 : 125







**12 GA\_Elevation\_Proposed\_12**  
Scale: 1 : 125

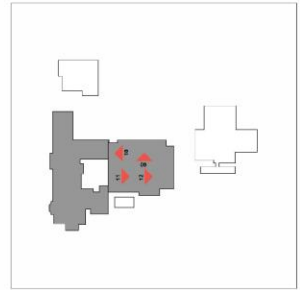
**Legend | GA Elevations**

**Existing Building**

 <b>Element</b>   Wall   Existing <b>Product</b>   Cladding   Restored to Conservation Architect Specification <b>Finish</b>   Stone   Natural	 <b>Element</b>   Glazing   Existing <b>Product</b>   Glazing   Restored to Conservation Architect Specification <b>Finish</b>   Clear
 <b>Element</b>   Wall   Existing <b>Product</b>   Cladding   Restored to Conservation Architect Specification <b>Finish</b>   White Brickwork	 <b>Element</b>   Glazing   Existing <b>Product</b>   Glazing   Restored to Conservation Architect Specification <b>Finish</b>   Clear
 <b>Element</b>   Wall   Existing <b>Product</b>   Cladding   Restored to Conservation Architect Specification <b>Finish</b>   White Brickwork	 <b>Element</b>   Glazing   Existing <b>Product</b>   Glazing   Restored to Conservation Architect Specification <b>Finish</b>   Clear
 <b>Element</b>   Wall   Existing <b>Product</b>   Cladding   Restored to Conservation Architect Specification <b>Finish</b>   White Brickwork	 <b>Element</b>   Glazing   Existing <b>Product</b>   Glazing   Restored to Conservation Architect Specification <b>Finish</b>   Clear
 <b>Element</b>   Wall   Existing <b>Product</b>   Cladding   Restored to Conservation Architect Specification <b>Finish</b>   White Brickwork	 <b>Element</b>   Glazing   Existing <b>Product</b>   Glazing   Restored to Conservation Architect Specification <b>Finish</b>   Clear
 <b>Element</b>   Wall   Existing <b>Product</b>   Cladding   Restored to Conservation Architect Specification <b>Finish</b>   White Brickwork	 <b>Element</b>   Glazing   Existing <b>Product</b>   Glazing   Restored to Conservation Architect Specification <b>Finish</b>   Clear
 <b>Element</b>   Wall   Existing <b>Product</b>   Cladding   Restored to Conservation Architect Specification <b>Finish</b>   White Brickwork	 <b>Element</b>   Glazing   Existing <b>Product</b>   Glazing   Restored to Conservation Architect Specification <b>Finish</b>   Clear
 <b>Element</b>   Wall   Existing <b>Product</b>   Cladding   Restored to Conservation Architect Specification <b>Finish</b>   White Brickwork	 <b>Element</b>   Glazing   Existing <b>Product</b>   Glazing   Restored to Conservation Architect Specification <b>Finish</b>   Clear
 <b>Element</b>   Wall   Existing <b>Product</b>   Cladding   Restored to Conservation Architect Specification <b>Finish</b>   White Brickwork	 <b>Element</b>   Glazing   Existing <b>Product</b>   Glazing   Restored to Conservation Architect Specification <b>Finish</b>   Clear

**Extension Building**

 <b>Element</b>   Wall <b>Product</b>   Masonry Brickwork <b>Finish</b>   Red	 <b>Element</b>   Facade <b>Product</b>   Aluminium Feature Fin <b>Finish</b>   Red  RAL 8002 Signalbrun or closest to match VM2nc Cladding
 <b>Element</b>   Wall <b>Product</b>   Masonry Brickwork <b>Finish</b>   Grey	 <b>Element</b>   Facade <b>Product</b>   Aluminium Feature Fin <b>Finish</b>   Red  RAL 7045 Traffic Grey B or closest to match VM2nc Cladding
 <b>Element</b>   Wall <b>Product</b>   Masonry Brickwork <b>Finish</b>   Grey	 <b>Element</b>   Facade <b>Product</b>   Aluminium Feature Fin <b>Finish</b>   Red  RAL 7045 Traffic Grey B or closest to match VM2nc Cladding
 <b>Element</b>   Wall <b>Product</b>   Masonry Brickwork <b>Finish</b>   Grey	 <b>Element</b>   Facade <b>Product</b>   Aluminium Feature Fin <b>Finish</b>   Red  RAL 7045 Traffic Grey B or closest to match VM2nc Cladding
 <b>Element</b>   Wall <b>Product</b>   Masonry Brickwork <b>Finish</b>   Grey	 <b>Element</b>   Facade <b>Product</b>   Aluminium Feature Fin <b>Finish</b>   Red  RAL 7045 Traffic Grey B or closest to match VM2nc Cladding
 <b>Element</b>   Wall <b>Product</b>   Masonry Brickwork <b>Finish</b>   Grey	 <b>Element</b>   Facade <b>Product</b>   Aluminium Feature Fin <b>Finish</b>   Red  RAL 7045 Traffic Grey B or closest to match VM2nc Cladding
 <b>Element</b>   Wall <b>Product</b>   Masonry Brickwork <b>Finish</b>   Grey	 <b>Element</b>   Facade <b>Product</b>   Aluminium Feature Fin <b>Finish</b>   Red  RAL 7045 Traffic Grey B or closest to match VM2nc Cladding
 <b>Element</b>   Wall <b>Product</b>   Masonry Brickwork <b>Finish</b>   Grey	 <b>Element</b>   Facade <b>Product</b>   Aluminium Feature Fin <b>Finish</b>   Red  RAL 7045 Traffic Grey B or closest to match VM2nc Cladding
 <b>Element</b>   Wall <b>Product</b>   Masonry Brickwork <b>Finish</b>   Grey	 <b>Element</b>   Facade <b>Product</b>   Aluminium Feature Fin <b>Finish</b>   Red  RAL 7045 Traffic Grey B or closest to match VM2nc Cladding





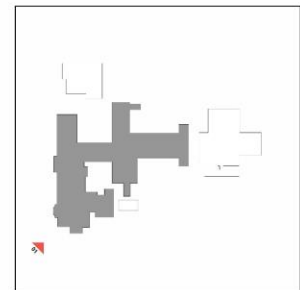
01 GA\_Axonometric\_Existing\_01  
Scale:

0 1.5 3.0 4.5 6.0

1:25 @ A1

Notes:

1. The information contained herein is for the project and site identified above.
2. This drawing is the property of the architect and shall not be used for any other project without the written consent of the architect.
3. The architect is not responsible for the accuracy of the information provided by the client or other sources.
4. The architect is not responsible for the accuracy of the information provided by the client or other sources.
5. The architect is not responsible for the accuracy of the information provided by the client or other sources.
6. The architect is not responsible for the accuracy of the information provided by the client or other sources.
7. The architect is not responsible for the accuracy of the information provided by the client or other sources.
8. The architect is not responsible for the accuracy of the information provided by the client or other sources.
9. The architect is not responsible for the accuracy of the information provided by the client or other sources.
10. The architect is not responsible for the accuracy of the information provided by the client or other sources.



11. The architect is not responsible for the accuracy of the information provided by the client or other sources.

ADD LMA 02 22 DR A  
**2500 P02**  
(EXISTING BUILDING)  
GA\_Axonometric\_Existing\_01

New Business School  
Ranger University, Philadelphia  
Penn. George L. S. S. S.  
Status: D2 (For Tender)  
Project Number: 2330



3 Stanley Street Creative CH1 3LS  
01244 404221  
www.leveluptolevel.com

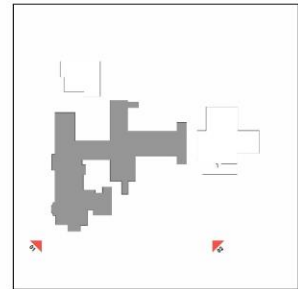


01 GA\_Perspective\_Existing\_01



02 GA\_Perspective\_Existing\_02

**Notes:**  
 1. The information contained herein is for the use of the client only and is not to be distributed to any other party without the written consent of the architect.  
 2. The architect is not responsible for the accuracy of the information provided by the client.  
 3. The architect is not responsible for the accuracy of the information provided by the client.  
 4. The architect is not responsible for the accuracy of the information provided by the client.  
 5. The architect is not responsible for the accuracy of the information provided by the client.  
 6. The architect is not responsible for the accuracy of the information provided by the client.  
 7. The architect is not responsible for the accuracy of the information provided by the client.  
 8. The architect is not responsible for the accuracy of the information provided by the client.  
 9. The architect is not responsible for the accuracy of the information provided by the client.  
 10. The architect is not responsible for the accuracy of the information provided by the client.

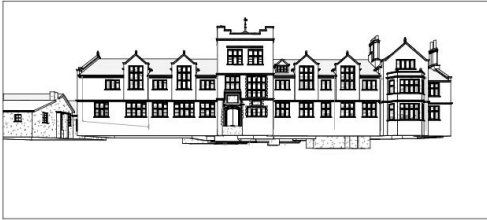


ADD LMA 02 22 DR A  
**2550 P01**  
 (EXISTING BUILDING)  
 GA\_Perspective\_Existing\_01

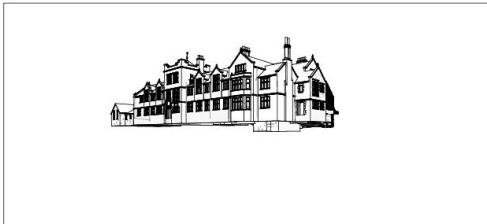
New Business School  
 Ranger University, Fifehead  
 Road, George LK7 2TG  
 Status: D2 | Tender  
 Project Number: 2330



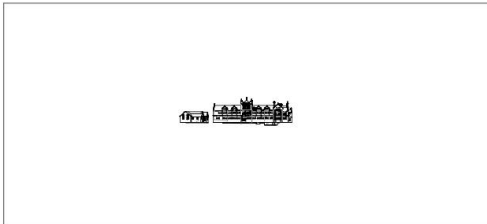
3 Sainsbury Street, Chester CH1 3LS  
 01244 694221  
 www.levelsandmorell.com



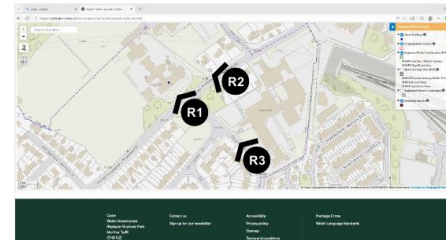
**Perspective R1** Image taken from 68.6m ASL



**Perspective R2** Image taken from 68.6m ASL



**Perspective R3** Image taken from 68.1m ASL



Map indicating positions of each perspective above.

**Notes:**

- Figural dimensions are to be used in all cases.
- Dimensions should not be scaled from drawing.
- All existing dimensions should be checked on site before commencement of the works.
- Any discrepancies in dimensions should be clarified with the Architect prior to commencement of the works.
- No deviation from this drawing will be permitted without the prior written consent of the Architect.
- This drawing is to be used in conjunction with all other relevant LM drawings, and the drawings and information produced by other professionals / consultants involved in the project.
- Please note that the use of any quantification data is done so at the user's own risk.
- This drawing is the copyright of **LoveLock Mitchell Architects** and to be returned to the Architect on completion of the contract. The drawing should not be reproduced without the written permission of **LoveLock Mitchell Architects**.

Rev.	Date	First Issue of Drawing	PAF	PAF
Rev.	Date	Revision Description	Drawn	Checked
P01	26/03/24	First Issue of Drawing	PAF	PAF

AGB | LMA | ZZ | ZZ | DR | A  
**9008 P01**  
 [EXISTING BUILDING]

Sketch\_Perspectives\_  
 Proposed01

**New Business School**  
**Bangor University, Ffriddoedd**  
**Road, Bangor LL57 2TS**

Status: A3 | Planning

Project Number: 2535



3 Stanley Street Chester CH1 2LS  
 01244 404321  
 www.love-lockmitchell.com



